

LEA Name : West Chester Area SD
Address : 782 Springdale Drive
Exton , PA 19341

County : Chester
AUN Number : 124159002
LEA Type : SD

Annual Financial Report Accuracy Certification Statement


For Fiscal Year Ending
6/30/2017

Pennsylvania Department of Education
&
Office of Comptroller Operations

PDE-2056: Intermediate Unit

PDE-2057: School District, AVTS/CTC, Charter School,
and Special Program Jointure

CERTIFICATION: By signing this page I agree that the electronic data submitted is a complete and accurate statement of the financial operations and status of the local education agency for the fiscal year. It has been prepared in accordance with generally accepted accounting principles and established Commonwealth of PA reporting guidelines.



Chief School Administrator Signature

Date 10-27-17



Board Secretary Signature

Date 10/27/2017

Justin Matys

Contact Person

(484)266-1021 Ext :

Contact Person Telephone Number

jmatys@wcasd.net

Contact Person E-mail Address

Contact Person Fax Number

Audit Certification
Annual Financial Report:
For Fiscal Year Ending 6/30/2017
(Pursuant to PA School Code Section 218(b))

LEA Name : West Chester Area SD
AUN Number : 124159002
County : Chester

Audit Certification Due: 12/31/2017

This certification is applicable to the Annual Financial Report data submitted through the Consolidated Financial Reporting System on: 10/27/2017
Date

Auditing Firm:
Barbacane, Thornton & Company LLP

Auditor Contact Name: Steve Kutsuflakis, CPA
Auditor Phone: 302-468-4008
Auditor E-mail: skutsuflakis@btcpa.com

CERTIFICATION: By signing this page I agree that the financial statements of the school have been properly audited as noted above pursuant to Article XXIV, and in the auditor's professional opinion, the Annual Financial Report (PDE-2057) submitted on the date referenced is materially consistent with the audited financial statements.

Chief School Administrator

Board Secretary



Signature

12-13-17
Date



Signature

12-13-2017
Date

Justin Matys

Contact Person

jmatys@wcasd.net

Contact Person E-mail Address

(484)266-1021

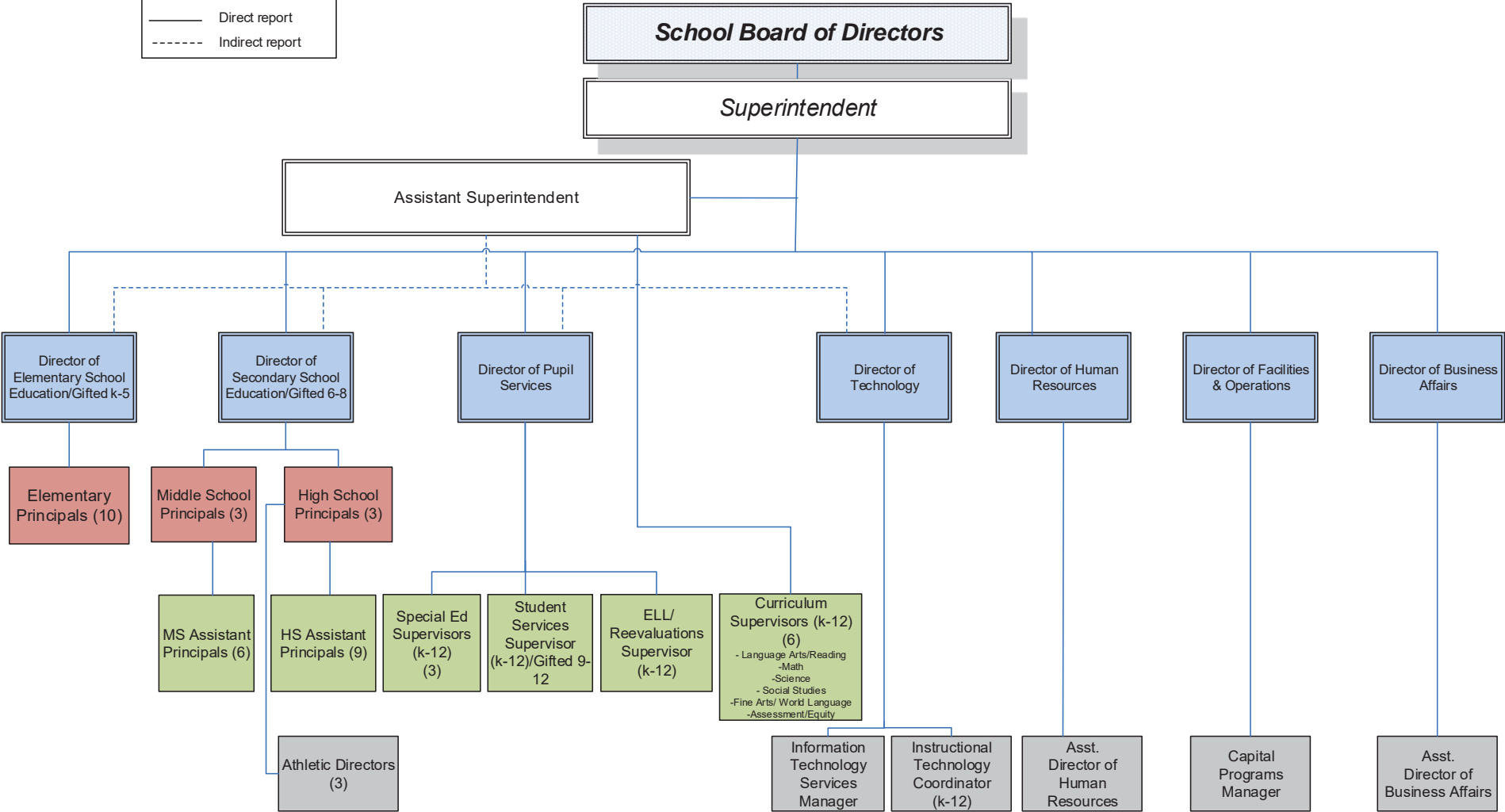
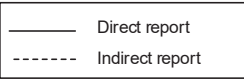
Ext :

Contact Person Telephone Number

Contact Person Fax Number

West Chester Area School District Management Team

June 2017



<u>Val Number</u>	<u>Description</u>	<u>Justification</u>
30450	Revenue Detail: AFR amount must equal or exceed PDE FAI System amount. 7271, AFR Rev Detail: \$5,902,935.31 7271, PDE FAI System: \$5,915,970.46	\$140,163.97 Wards of State reimbursement were recorded as receivable in 2015-16. \$127,128.82 has been recorded as a receivable in 2016-17 for 1306/wards of the state.
50160	SOIN: All Governmental Fund General Obligation Bonds must include an amount for Interest Paid during Fiscal Year. Correct data or enter a justification.	Series of 2017, issued May 2017 is a new bond issue with no interest payments in 2016-17
50460	SESS - 2420 Medical Services: SESS Schedule amounts for Special Education vary from prior year by 40% or more. Correct the data or enter a justification. SESS Schedule 2420: \$347.40 Prior Year SESS Schedule 2420: \$189.00	The amount only increased by \$158.40 for students requiring personal care assistants

Amounts Expressed in Whole Dollars	<u>General Fund</u> <u>(10)</u>	<u>Public Purpose Trust</u> <u>(27)</u>	<u>Other Compt Approved</u> <u>(28)</u>	<u>Athletic / Activity</u> <u>(29)</u>	<u>Capital Reserve (690.</u> <u>1850)</u> <u>(31)</u>
Assets And Deferred Outflows Of Resources					
Assets					
0100 Cash and Cash Equivalents	14,612,018				
0110 Investments	21,453,508				
0120 Taxes Receivable	3,856,980				
0130 Due From Other Funds					
0141 Due From Other Governments	6,881,636				
0142 State Revenue Receivable					
0143 Federal Revenue Receivable					
0145 Other Intergovernmental Revenue Receivable					
0146 Due from Primary Government					
0147 Due from Component Unit					
0150 Other Receivables	1,207,413				
0170 Inventories					
0180 Prepaid Expenses (Expenditures)	2,688,371				
0190 Other Current Assets					
Total Assets	\$50,699,926				
0910 Deferred Outflows of Resources					
Total Assets And Deferred Outflows Of Resources	\$50,699,926				

Amounts Expressed in Whole Dollars

	<u>Capital Reserve (1431)</u> <u>(32)</u>	<u>Other Capital Projects</u> <u>Fund</u> <u>(39)</u>	<u>Debt Service</u> <u>(40)</u>	<u>Permanent</u> <u>(90)</u>	<u>Total Governmental</u> <u>Funds</u>
Assets And Deferred Outflows Of Resources					
Assets					
0100 Cash and Cash Equivalents	5,219,928	1,711,663			21,543,609
0110 Investments	18,087,860	5,453,237			44,994,605
0120 Taxes Receivable					3,856,980
0130 Due From Other Funds					
0141 Due From Other Governments					6,881,636
0142 State Revenue Receivable					
0143 Federal Revenue Receivable					
0145 Other Intergovernmental Revenue Receivable					
0146 Due from Primary Government					
0147 Due from Component Unit					
0150 Other Receivables					1,207,413
0170 Inventories					
0180 Prepaid Expenses (Expenditures)	357,900				3,046,271
0190 Other Current Assets					
Total Assets	\$23,665,688	\$7,164,900			\$81,530,514
0910 Deferred Outflows of Resources					
Total Assets And Deferred Outflows Of Resources	\$23,665,688	\$7,164,900			\$81,530,514

Amounts Expressed in Whole Dollars

	<u>General Fund</u> <u>(10)</u>	<u>Public Purpose Trust</u> <u>(27)</u>	<u>Other Compt Approved</u> <u>(28)</u>	<u>Athletic / Activity</u> <u>(29)</u>	<u>Capital Reserve (690.</u> <u>1850)</u> <u>(31)</u>
Liabilities And Deferred Inflows Of Resources And Fund Balances					
Liabilities					
0400 Due to Other Funds	4,933				
0411 Due to Other Governments					
0412 Due to Primary Government					
0413 Due to Component Unit					
0420 Accounts Payable	4,165,237				
0430 Contracts Payable					
0440 Current Portion of Long-Term Debt					
0450 Short-Term Payables					
0461 Accrued Salaries and Benefits					
0462 Payroll Deductions and Withholding	15,764,927				
0480 Unearned Revenues	83,608				
0490 Other Current Liabilities					
Total Liabilities	\$20,018,705				
0950 Deferred Inflows of Resources	1,901,028				
Fund Balances					
0810 Nonspendable Fund Balance	2,688,371				
0820 Restricted Fund Balance					
0830 Committed Fund Balance	5,276,909				
0840 Assigned Fund Balance	7,806,690				
0850 Unassigned Fund Balance	13,008,223				
Total Fund Balances	\$28,780,193				
Total Liabilities, Deferred Inflows Of Resources And Fund Balances	\$50,699,926				

Amounts Expressed in Whole Dollars	<u>Capital Reserve (1431)</u> <u>(32)</u>	<u>Other Capital Projects</u> <u>Fund</u> <u>(39)</u>	<u>Debt Service</u> <u>(40)</u>	<u>Permanent</u> <u>(90)</u>	<u>Total Governmental</u> <u>Funds</u>
Liabilities And Deferred Inflows Of Resources And Fund Balances					
Liabilities					
0400 Due to Other Funds					4,933
0411 Due to Other Governments					
0412 Due to Primary Government					
0413 Due to Component Unit					
0420 Accounts Payable	1,221,599	2,810,059			8,196,895
0430 Contracts Payable					
0440 Current Portion of Long-Term Debt					
0450 Short-Term Payables					
0461 Accrued Salaries and Benefits					
0462 Payroll Deductions and Withholding					15,764,927
0480 Unearned Revenues					83,608
0490 Other Current Liabilities					
Total Liabilities	\$1,221,599	\$2,810,059			\$24,050,363
0950 Deferred Inflows of Resources					1,901,028
Fund Balances					
0810 Nonspendable Fund Balance	357,900				3,046,271
0820 Restricted Fund Balance	22,086,189	4,354,841			26,441,030
0830 Committed Fund Balance					5,276,909
0840 Assigned Fund Balance					7,806,690
0850 Unassigned Fund Balance					13,008,223
Total Fund Balances	\$22,444,089	\$4,354,841			\$55,579,123
Total Liabilities, Deferred Inflows Of Resources And Fund Balances	\$23,665,688	\$7,164,900			\$81,530,514

Amounts Expressed in Whole Dollars	<u>General Fund</u> <u>(10)</u>	<u>Public Purpose Trust</u> <u>(27)</u>	<u>Other Compt Approved</u> <u>(28)</u>	<u>Athletic / Activity</u> <u>(29)</u>	<u>Capital Reserve (690.</u> <u>1850)</u> <u>(31)</u>
Revenues					
6000 Revenue from Local Sources	192,287,557				
7000 Revenue from State Sources	41,156,644				
8000 Revenue from Federal Sources	1,957,139				
Total Revenues	\$235,401,340				
Expenditures					
1000 Instruction	137,794,289				
2000 Support Services	62,443,502				
3000 Operation of Non-Instructional Services	4,865,617				
4000 Facilities Acquisition, Construction and Improvement Services					
5110 Debt Service	24,085,387				
5130 Refund of Prior Year Revenues / Receipts					
Total Expenditures	\$229,188,795				
Excess (Deficiency) Of Revenues Over Expenditures	\$6,212,545				
Other Financing Sources (Uses)					
9110 Face Value of Bonds Issued					
9120 Proceeds from Refunding of Bonds					
9130 Bond Premiums					
9200 Proceeds from Extended-Term Financing					
9300 Interfund Transfers - IN					
9400 Sale of or Compensation for Loss of Fixed Assets					
9710 Transfers from Component Units					
9720 Transfers from Primary Governments					
9910 Other Financing Sources Not Listed in the 9000 Series					
9990 Insurance Recoveries					
5120 Debt Service – Refunded Bonds					
5150 Bond Discounts					
5200 Interfund Transfers – Out	6,193,328				
5300 Transfers Out to Component Units/Primary Governments					
Total Other Financing Sources (Uses)	(\$6,193,328)				

Amounts Expressed in Whole Dollars	<u>Capital Reserve (1431)</u> <u>(32)</u>	<u>Other Capital Projects</u> <u>Fund</u> <u>(39)</u>	<u>Debt Service</u> <u>(40)</u>	<u>Permanent</u> <u>(90)</u>	<u>Total Governmental</u> <u>Funds</u>
Revenues					
6000 Revenue from Local Sources	167,608				192,455,165
7000 Revenue from State Sources					41,156,644
8000 Revenue from Federal Sources					1,957,139
Total Revenues	\$167,608				\$235,568,948
Expenditures					
1000 Instruction					137,794,289
2000 Support Services	2,739,743	186,434	141,354		65,511,033
3000 Operation of Non-Instructional Services					4,865,617
4000 Facilities Acquisition, Construction and Improvement Services	8,617,323	8,009,914			16,627,237
5110 Debt Service					24,085,387
5130 Refund of Prior Year Revenues / Receipts					
Total Expenditures	\$11,357,066	\$8,196,348	\$141,354		\$248,883,563
Excess (Deficiency) Of Revenues Over Expenditures	(\$11,189,458)	(\$8,196,348)	(\$141,354)		(\$13,314,615)
Other Financing Sources (Uses)					
9110 Face Value of Bonds Issued		8,500,000			8,500,000
9120 Proceeds from Refunding of Bonds			7,495,000		7,495,000
9130 Bond Premiums			97,083		97,083
9200 Proceeds from Extended-Term Financing					
9300 Interfund Transfers - IN	6,193,328	12,351			6,205,679
9400 Sale of or Compensation for Loss of Fixed Assets					
9710 Transfers from Component Units					
9720 Transfers from Primary Governments					
9910 Other Financing Sources Not Listed in the 9000 Series					
9990 Insurance Recoveries					
5120 Debt Service – Refunded Bonds			7,438,378		7,438,378
5150 Bond Discounts					
5200 Interfund Transfers – Out			12,351		6,205,679
5300 Transfers Out to Component Units/Primary Governments					
Total Other Financing Sources (Uses)	\$6,193,328	\$8,512,351	\$141,354		\$8,653,705

Amounts Expressed in Whole Dollars	<u>General Fund</u> <u>(10)</u>	<u>Public Purpose Trust</u> <u>(27)</u>	<u>Other Compt Approved</u> <u>(28)</u>	<u>Athletic / Activity</u> <u>(29)</u>	<u>Capital Reserve</u> <u>(690.</u> <u>1850)</u> <u>(31)</u>
Special And Extraordinary Items					
9920 Special Items – Gains					
9930 Extraordinary Items – Gains					
5520 Special Items – Losses					
5530 Extraordinary Items – Losses					
Net Change In Fund Balances	\$19,217				
Fund Balance					
0001 Fund Balance - Beginning of Fiscal Year	28,760,978				
Fund Balance - End Of Year	\$28,780,195				

Amounts Expressed in Whole Dollars	<u>Capital Reserve (1431)</u> <u>(32)</u>	<u>Other Capital Projects</u> <u>Fund</u> <u>(39)</u>	<u>Debt Service</u> <u>(40)</u>	<u>Permanent</u> <u>(90)</u>	<u>Total Governmental</u> <u>Funds</u>
Special And Extraordinary Items					
9920 Special Items – Gains					
9930 Extraordinary Items – Gains					
5520 Special Items – Losses					
5530 Extraordinary Items – Losses					
Net Change In Fund Balances	(\$4,996,130)	\$316,003			(\$4,660,910)
Fund Balance					
0001 Fund Balance - Beginning of Fiscal Year	27,440,218	4,038,838			60,240,034
Fund Balance - End Of Year	\$22,444,088	\$4,354,841			\$55,579,124

Amounts Expressed in Whole Dollars	<u>Food Service</u> <u>(51)</u>	<u>Child Care</u> <u>Operations</u> <u>(52)</u>	<u>Other Enterprise</u> <u>(58)</u>	<u>TOTAL</u>	<u>Internal Service</u> <u>(60)</u>
Assets And Deferred Outflows Of Resources					
Current Assets					
0100 Cash and Cash Equivalents	17,037			17,037	
0110 Investments	955,711			955,711	
0130 Due From Other Funds	4,933			4,933	
0141 Due From Other Governments	102,178			102,178	
0142 State Revenue Receivable					
0143 Federal Revenue Receivable					
0146 Due from Primary Government					
0147 Due from Component Unit					
0150 Other Receivables	119,024			119,024	
0170 Inventories	25,490			25,490	
0180 Prepaid Expenses (Expenditures)					
0190 Other Current Assets					
Total Current Assets	\$1,224,373			\$1,224,373	
Noncurrent Assets					
0211 Land					
0212 Site Improvements (Net)					
0220 Buildings and Building Improvements (Net)					
0230 Machinery, Equipment and Furniture (Net)	590,353			590,353	
0250 Construction in Progress					
0260 Long Term Prepayments					
0290 Other Noncurrent Assets					
Total Noncurrent Assets	\$590,353			\$590,353	
0910 Deferred Outflows of Resources					
Total Assets And Deferred Outflows Of Resources	\$1,814,726			\$1,814,726	

Amounts Expressed in Whole Dollars	<u>Food Service</u> <u>(51)</u>	<u>Child Care</u> <u>Operations</u> <u>(52)</u>	<u>Other Enterprise</u> <u>(58)</u>	<u>TOTAL</u>	<u>Internal Service</u> <u>(60)</u>
Liabilities And Deferred Inflows Of Resources And Net Position					
Current Liabilities					
0400 Due to Other Funds					
0411 Due to Other Governments					
0413 Due to Component Unit					
0420 Accounts Payable	168,249			168,249	
0430 Contracts Payable					
0440 Current Portion of Long-Term Debt					
0450 Short-Term Payables					
0461 Accrued Salaries and Benefits					
0462 Payroll Deductions and Withholding					
0480 Unearned Revenues	179,088			179,088	
0490 Other Current Liabilities					
Total Current Liabilities	\$347,337			\$347,337	
Noncurrent Liabilities					
0510 Bonds Payable					
0520 Extended-Term Financing Agreements Payable					
0530 Lease-Purchase Obligations					
0540 Accumulated Compensated Absences					
0550 Authority Lease Obligations					
0560 Other Post-Employment Benefits (OPEB)					
0570 Net Pension Liability					
0599 Other Noncurrent Liabilities					
Total Noncurrent Liabilities					
Total Liabilities	\$347,337			\$347,337	
0950 Deferred Inflows of Resources					
Net Position					
0791 Net Investment in Capital Assets	590,353			590,353	
0008 Restricted Net Position (0792 – 0798)					
0799 Unrestricted Net Position	877,036			877,036	
Total Net Position	\$1,467,389			\$1,467,389	
Total Liabilities And Deferred Inflows Of Resources And Net Position	\$1,814,726			\$1,814,726	

Amounts Expressed in Whole Dollars	<u>Food Service</u> <u>(51)</u>	<u>Child Care Operations</u> <u>(52)</u>	<u>Other Enterprise</u> <u>(58)</u>	<u>TOTAL</u>	<u>Internal Service</u> <u>(60)</u>
Operating Revenues					
6600 Food Service Revenue	2,493,463			2,493,463	
0071 Charges for Services					
0072 Other Operating Revenue					
Total Operating Revenues	\$2,493,463			\$2,493,463	
Operating Expenses					
100 Personnel Services – Salaries					
200 Personnel Services – Employee Benefits					
300 Purchased Professional and Technical Services					
400 Purchased Property Services					
500 Other Purchased Services	3,211,903			3,211,903	
600 Supplies	3,610			3,610	
740 Depreciation	78,862			78,862	
810 Dues and Fees					
890 Miscellaneous Expenditures					
Total Operating Expenses	\$3,294,375			\$3,294,375	
Operating Income (Loss)	(\$800,912)			(\$800,912)	
Non Operating Revenues (Expenses)					
6500 Earnings on Investments	7,311			7,311	
6920 Contributions and Donations from Private Sources					
6930 Gains or Losses on Sale of Fixed Assets					
6991 Refunds of a Prior Year Expenditure					
7000 Revenue from State Sources	53,373			53,373	
8000 Revenue from Federal Sources	762,662			762,662	
820 Claims and Judgments Against the LEA					
830 Interest					
TOTAL Non Operating Revenues (Expenses)	\$823,346			\$823,346	
Income (Loss) Before Contributions And Transfers	\$22,434			\$22,434	

Amounts Expressed in Whole Dollars	<u>Food Service</u> <u>(51)</u>	<u>Child Care Operations</u> <u>(52)</u>	<u>Other Enterprise</u> <u>(58)</u>	<u>TOTAL</u>	<u>Internal Service</u> <u>(60)</u>
Contributions, Transfers, and Special and Extraordinary Items					
5200 Interfund Transfers – Out					
5300 Transfers Out to Component Units/Primary Governments					
5520 Special Items – Losses					
5530 Extraordinary Items – Losses					
9300 Interfund Transfers - IN					
9500 Capital Contributions					
9700 Transfers IN From Component Units/Primary Governments					
9920 Special Items – Gains					
9930 Extraordinary Items – Gains					
Change In Net Position	\$22,434			\$22,434	
0002 Net Position - Beginning of Fiscal Year	1,444,955			1,444,955	
0003 Accounting Changes / Residual Equity Transfers					
Net Position - End Of Year	\$1,467,389			\$1,467,389	

Amounts Expressed in Whole Dollars	<u>Food Service</u> <u>(51)</u>	<u>Child Care Operations</u> <u>(52)</u>	<u>Other Enterprise</u> <u>(58)</u>	<u>TOTAL</u>	<u>Internal Service(60)</u>
Cash Flows From Operating Activities					
0011 Cash Receipts From Users	2,472,190			2,472,190	
0012 Cash Receipts From Assessments Made to Other Funds					
0013 Cash Receipts From Earnings on Investments					
0014 Cash Receipts From Other Operating Revenue					
0015 Cash Payments To Employees For Services					
0016 Cash Payments For Insurance Claims					
0017 Cash Payments To Suppliers For Goods and Services	3,089,304			3,089,304	
0018 Cash Payments For Other Operating Expenses					
Net Cash Provided By (Used For) Operating Activities	(\$617,114)			(\$617,114)	
Cash Flows From Non-Capital Financing Activities					
0021 Receipts From Local Sources - 6000					
0022 Receipts From State Sources - 7000	47,367			47,367	
0023 Receipts From Federal Sources -8000	552,301			552,301	
0024 Notes and Loans Received (Repaid)					
0025 Interest Paid on Notes/Loans - 5100-830					
0026 Operating Transfers In (Out)/Residual Equity Trans					
0027 Operating Transfers In (Out) Primary Government / Comp Unit					
0028 Receipts From Refund of Prior Year Expenditures - 6991					
0029 Special and Extraordinary Gains (losses)					
Net Cash Prov By (Used for) Non-Capital Financing Activities	\$599,668			\$599,668	
Cash Flows From Capital and Related Financing Activities					
0031 Payments For Fac Acq, Const, and Imp - 4000	(266,829)			(266,829)	
0032 Gain / (Loss) on Sale of Fixed Assets - 6930					
0033 Proceeds From Extended Term Financing - 9200					
0034 Principal Paid on Financing Agreements					
0035 Interest Paid on Financing Agreements - 5100-830					
0036 (Inc) Dec in Contributed Capital					
Net Cash Prov By (Used for) Capital and Related Financing Activities	(\$266,829)			(\$266,829)	
Cash Flows From Investing Activities					
0041 Earnings on Investments - 6500	7,311			7,311	
0042 Purchase of Inv Securities / Deposits to Inv Pools					
0043 Receipts From Investment Pool Withdrawals					
0044 Proceeds from Sale and Maturity of Inv Securities	241,691			241,691	
0045 Loans Received (Paid)					
Net Cash Prov By (Used for) Investing Activities	\$249,002			\$249,002	

	<u>Food Service</u> <u>(51)</u>	<u>Child Care Operations</u> <u>(52)</u>	<u>Other Enterprise</u> <u>(58)</u>	<u>TOTAL</u>	<u>Internal Service</u> <u>(60)</u>
Net Increase (Decrease) in Cash Flows	(35,273)			(35,273)	
0004 Cash and Cash Equivalents Beginning of Year	52,310			52,310	
Cash and Cash Equivalents at Year End	\$17,037			\$17,037	
<hr/>					
Reconciliation of Operating Income (Loss) To Net Cash Provided by (Used For) Operating Activities					
0005 Operating Income (Loss) per REP	(800,912)			(800,912)	
Adjustments					
0051 Depreciation and Net Amortization	78,862			78,862	
0052 Provision for Uncollectible Accounts					
0053 Other Adjustments	140,809			140,809	
Effect of Changes in Assets, Liabilities, Deferred Outflows and Deferred Inflows					
0054 (Inc) Dec In Accounts Receivable (0120-0150)	(22,267)			(22,267)	
0055 Advances to Other Funds (0160)					
0056 (Inc) Dec in Inventories (0170)					
0057 (Inc) Dec in Prepaid Expenses (0180)					
0058 (Inc) Dec in Other Current or Noncurrent Assets	(4,348)			(4,348)	
0064 Deferred Outflows (0910)					
0059 Inc (Dec) in Accounts Payable (0400-0450)	(14,600)			(14,600)	
0060 Inc (Dec) in Accrued Salaries/Benefits (0461)					
0065 Inc (Dec) in Net Pension Liabilities (0570)					
0066 Inc (Dec) in Other Postemp Benefit Oblig (0560)					
0061 Inc (Dec) in Payroll Deductions/Withholding (0462)					
0062 Inc (Dec) in Unearned Revenue (0480)	5,342			5,342	
0063 Inc (Dec) in Other Current or Noncurrent Liabilities					
0067 Deferred Inflows (0950)					
Total Adjustments	\$183,798			\$183,798	
Cash Provided By (Used for) Total	(\$617,114)			(\$617,114)	

COMBINED STATEMENT OF CASH FLOWS
SCHEDULE OF NONCASH INVESTING, CAPITAL, AND FINANCING ACTIVITIES

Explanation of Transaction and Balance Sheet Effect	Amount
Total	

LEA : 124159002 West Chester Area SD

Printed 12/29/2017 2:20:06 PM

Amounts Expressed in Whole Dollars

	<u>Private Purpose Trust</u> (71)	<u>Investment Trust</u> (72)	<u>Pension Trust</u> (73)	<u>Activity</u> (81)
Assets And Deferred Outflows Of Resources				
Assets				
0100 Cash and Cash Equivalents	494,866			457,140
0110 Investments				
0130 Due From Other Funds				
0147 Due from Component Unit				
0150 Other Receivables				
0170 Inventories				
0180 Prepaid Expenses (Expenditures)				
0190 Other Current Assets				
0220 Buildings and Building Improvements (Net)				
0230 Machinery, Equipment and Furniture (Net)				
Total Assets	\$494,866			\$457,140
0910 Deferred Outflows of Resources				
Total Assets And Deferred Outflows Of Resources	\$494,866			\$457,140

LEA : 124159002 West Chester Area SD

Printed 12/29/2017 2:20:06 PM

Amounts Expressed in Whole Dollars

	<u>Other Agency (89)</u>	<u>Discrete Component Units (98)</u>	<u>Discrete Component Units (99)</u>	<u>Total Fiduciary Funds</u>
Assets And Deferred Outflows Of Resources				
Assets				
0100 Cash and Cash Equivalents		50,676		1,002,682
0110 Investments				
0130 Due From Other Funds				
0147 Due from Component Unit				
0150 Other Receivables		22,246		22,246
0170 Inventories				
0180 Prepaid Expenses (Expenditures)				
0190 Other Current Assets				
0220 Buildings and Building Improvements (Net)				
0230 Machinery, Equipment and Furniture (Net)				
Total Assets		\$72,922		\$1,024,928
0910 Deferred Outflows of Resources				
Total Assets And Deferred Outflows Of Resources		\$72,922		\$1,024,928

LEA : 124159002 West Chester Area SD

Printed 12/29/2017 2:20:06 PM

Amounts Expressed in Whole Dollars	<u>Private Purpose Trust</u> (71)	<u>Investment Trust</u> (72)	<u>Pension Trust</u> (73)	<u>Activity</u> (81)
Liabilities, Deferred Inflows Of Resources And Net Position				
Liabilities				
0400 Due to Other Funds				
0411 Due to Other Governments				
0412 Due to Primary Government				
0413 Due to Component Unit				
0420 Accounts Payable				
0430 Contracts Payable				
0450 Short-Term Payables				
0461 Accrued Salaries and Benefits				
0462 Payroll Deductions and Withholding				
0480 Unearned Revenues				
0490 Other Current Liabilities	28,305			457,140
Total Liabilities	\$28,305			\$457,140
0950 Deferred Inflows of Resources				
Net Position				
0791 Net Investment in Capital Assets				
0009 Restricted Net Position (0792 – 0798)	466,561			
0799 Unrestricted Net Position				
Total Net Position	\$466,561			
Total Liabilities, Deferred Inflows Of Resources And Net Position	\$494,866			\$457,140

LEA : 124159002 West Chester Area SD

Printed 12/29/2017 2:20:06 PM

Amounts Expressed in Whole Dollars	<u>Other Agency</u> (89)	<u>Discrete Component Units</u> (98)	<u>Discrete Component Units</u> (99)	<u>Total Fiduciary Funds</u>
Liabilities, Deferred Inflows Of Resources And Net Position				
Liabilities				
0400 Due to Other Funds				
0411 Due to Other Governments				
0412 Due to Primary Government				
0413 Due to Component Unit				
0420 Accounts Payable				
0430 Contracts Payable				
0450 Short-Term Payables				
0461 Accrued Salaries and Benefits				
0462 Payroll Deductions and Withholding				
0480 Unearned Revenues				
0490 Other Current Liabilities		72,922		558,367
Total Liabilities		\$72,922		\$558,367
0950 Deferred Inflows of Resources				
Net Position				
0791 Net Investment in Capital Assets				
0009 Restricted Net Position (0792 – 0798)				466,561
0799 Unrestricted Net Position				
Total Net Position				\$466,561
Total Liabilities, Deferred Inflows Of Resources And Net Position		\$72,922		\$1,024,928

Amounts Expressed in Whole Dollars	<u>Private Purpose Trust</u> (71)	<u>Investment Trust</u> (72)	<u>Pension Trust</u> (73)	<u>Discrete Component</u> <u>Units</u> (98)	<u>Discrete Component</u> <u>Units</u> (99)	<u>Total Fiduciary</u> <u>Funds</u>
Additions						
0091 Gifts and Contributions	716,081					716,081
0092 Other Additions						
Deductions						
0093 Scholarships Awarded						
0094 Other Deductions	660,210					660,210
Change In Net Position	\$55,871					\$55,871
0006 Net Position – Beginning of Fiscal Year	410,690					410,690
0007 Net Position Held in Trust for Pension Benefits						
Net Position - End of Fiscal Year	\$466,561					\$466,561

	<u>Revenue Reported In Current Year</u>	<u>Current Year Tax Accrual</u>	<u>Prior Year Tax Accrual</u>	<u>Taxes Collected In Current Year</u>
<u>Revenue from Local Sources</u>				
6111 Current Real Estate Taxes	156,989,627.64			156,989,627.64
6112 Interim Real Estate Taxes	695,464.08			695,464.08
6113 Public Utility Realty Taxes	196,737.57			196,737.57
6151 Current Act 511 Earned Income Taxes	21,336,520.26	656,293.74	749,588.65	21,429,815.17
6153 Current Act 511 Real Estate Transfer Taxes	6,115,023.94	817,284.93	362,492.80	5,660,231.81
6411 Delinquent Real Estate Taxes	3,096,746.41	482,372.96	478,294.53	3,092,667.98
6412 Delinquent Interim Real Estate Taxes	383,096.39			383,096.39
6500 Earnings on Investments	731,944.32			
6700 Revenues from LEA Activities	227,192.75			
6831 Federal Revenue Received from Other Pennsylvania Public LEAs	5,197.00			
6832 Federal IDEA Revenue Received as Pass Through	1,328,361.06			
6910 Rentals	509,869.25			
6920 Contributions and Donations from Private Sources	17,601.53			
6942 Summer School Tuition	47,978.28			
6944 Receipts from Other LEAs in Pennsylvania - Education	118,232.50			
6949 Other Tuition from Patrons	113,795.00			
6991 Refunds of a Prior Year Expenditure	34,677.10			
6992 Energy Efficiency Revenues and Incentives	276,995.00			
6999 Other Revenues Not Specified Above	62,497.33			
TOTAL Revenue from Local Sources	\$192,287,557.41	\$1,955,951.63	\$1,590,375.98	\$188,447,640.64

**Revenue Reported
In Current Year**

Revenue from State Sources

7110 Basic Education Funding	8,012,194.27			
7160 Tuition for Orphans Subsidy	236,233.81			
7271 Special Education funds for School-Aged Pupils	5,902,935.31			
7311 Pupil Transportation Subsidy	2,139,919.90			
7312 Nonpublic and Charter School Pupil Transportation Subsidy	1,534,225.00			
7320 Rental and Sinking Fund Payments / Building Reimbursement Subsidy	2,104,117.32			
7330 Health Services (Medical, Dental, Nurse, Act 25)	256,426.45			
7340 State Property Tax Reduction Allocation	3,540,620.47			
7505 Ready to Learn Block Grant	399,095.00			
7810 State Share of Social Security and Medicare Taxes	3,450,589.45			
7820 State Share of Retirement Contributions	13,580,286.57			
TOTAL Revenue from State Sources	\$41,156,643.55			

**Revenue Reported
In Current Year**

Revenue from Federal Sources

8514 NCLB, Title I - Improving the Academic Achievement of the Disadvantaged	1,013,161.18			
8515 NCLB, Title II - Preparing, Training and Recruiting High Quality Teachers and Principals	384,127.29			
8516 NCLB, Title III - Language Instruction for Limited English Proficient and Immigrant Students	92,715.17			
8810 School-Based Access Medicaid Reimbursement Program (SBAP) Reimbursements (Access)	432,914.78			
8820 Medical Assistance Reimbursement for Administrative Claiming (Quarterly) Program	34,220.97			
TOTAL Revenue from Federal Sources	\$1,957,139.39			
TOTAL FROM ALL SOURCES	\$235,401,340.35	\$1,955,951.63	\$1,590,375.98	\$188,447,640.64

Revenue from Local Sources	192,287,557.41
Revenue from State Sources	41,156,643.55
Revenue from Federal Sources	1,957,139.39
Other Financing Sources	
TOTAL FROM ALL SOURCES	\$235,401,340.35

General Fund (10)

	<u>Total</u>
1000 Instruction	
100 Personnel Services – Salaries	
100 Personnel Services – Salaries	63,079,139.88
Total Personnel Services – Salaries	\$63,079,139.88
200 Personnel Services – Employee Benefits	
210 Group Insurance – Contracted Provider	147,777.44
220 Social Security Contributions	4,603,880.21
230 PSERS Retirement Contributions	18,976,407.65
250 Unemployment Compensation	22,876.76
260 Workers’ Compensation	640,135.27
270 Group Insurance – Self-Insurance	13,315,621.98
299 All Other Employee Benefits	259,700.15
Total Personnel Services – Employee Benefits	\$37,966,399.46
300 Purchased Professional and Technical Services	
310 Official / Administrative Services	47,258.81
322 Professional Educational Services – Ius	6,479,692.49
323 Professional Educational Services – Other Educational Agencies	2,103,550.25
324 Professional Educational Services – Employee Training and Development Services	55,448.40
329 Professional Educational Services – Other	6,758,187.02
330 Other Professional Services	1,350,992.08
340 Technical Services	72,723.00
390 Other Purchased Professional and Technical Services	8,405.08
Total Purchased Professional and Technical Services	\$16,876,257.13
400 Purchased Property Services	
430 Repairs and Maintenance Services	120,338.31
440 Rentals	278,903.22
Total Purchased Property Services	\$399,241.53
500 Other Purchased Services	
510 Student Transportation Services	71,960.02
530 Communications	140,294.26
550 Printing and Binding	31,413.20
561 Tuition To Other School Districts Within the State	70,484.97
562 Tuition To Pennsylvania Charter Schools	9,818,843.01
563 Tuition To Nonpublic Schools	727,480.82
564 Tuition To Career and Technology Centers	2,722,372.00
567 Tuition To Approved Private Schools (APS) and PA Chartered Schools for the Deaf and Blind	1,431,098.25
568 Tuition To Private Residential Rehabilitative Institutions (PRRI) [In-State] and Detention Centers	9,400.24
569 Tuition – Other	1,265,002.96
580 Travel	75,598.66
Total Other Purchased Services	\$16,363,948.39
600 Supplies	
610 General Supplies	1,317,731.58
630 Food	10,883.18
640 Books and Periodicals	1,039,947.48
650 Supplies & Fees – Technology Related	479,705.13

General Fund (10)

1000 Instruction	<u>Total</u>
Total Supplies	\$2,848,267.37
700 Property	
752 Capital Equipment – Original and Additional	5,196.67
758 Capitalized Technology Software - Original	48,106.10
762 Capitalized Equipment - Replacement	102,106.60
768 Capitalized Technology Software - Replacement	17,099.68
Total Property	\$172,509.05
800 Other Objects	
810 Dues and Fees	88,225.90
890 Miscellaneous Expenditures	300.00
Total Other Objects	\$88,525.90
Total 1000 Instruction	\$137,794,288.71

General Fund (10)

1100 Regular Programs – Elementary / Secondary

	<u>Elementary</u>	<u>Secondary</u>	<u>Federal</u>	<u>Total</u>
100 Personnel Services – Salaries				
100 Personnel Services – Salaries	23,822,975.74	24,431,659.99	571,033.81	48,825,669.54
Total Personnel Services – Salaries	\$23,822,975.74	\$24,431,659.99	\$571,033.81	\$48,825,669.54
200 Personnel Services – Employee Benefits				
210 Group Insurance – Contracted Provider	53,944.55	56,698.18	1,003.53	111,646.26
220 Social Security Contributions	1,738,773.52	1,795,690.86	41,744.17	3,576,208.55
230 PSERS Retirement Contributions	7,184,426.22	7,364,194.39	171,167.59	14,719,788.20
250 Unemployment Compensation	8,747.82	9,002.37		17,750.19
260 Workers' Compensation	244,776.53	251,905.24		496,681.77
270 Group Insurance – Self-Insurance	5,042,247.45	4,688,346.35	126,775.42	9,857,369.22
299 All Other Employee Benefits	99,304.86	102,196.84		201,501.70
Total Personnel Services – Employee Benefits	\$14,372,220.95	\$14,268,034.23	\$340,690.71	\$28,980,945.89
300 Purchased Professional and Technical Services				
310 Official / Administrative Services	24,139.80	23,119.01		47,258.81
322 Professional Educational Services – Ius	4,500.00			4,500.00
323 Professional Educational Services – Other Educational Agencies	19,599.59	18,288.24		37,887.83
324 Professional Educational Services – Employee Training and Development Services	5,468.51	11,826.12	22,222.83	39,517.46
329 Professional Educational Services – Other	907,818.81	876,006.68	9,391.80	1,793,217.29
330 Other Professional Services	45,965.47	44,021.74	16,095.58	106,082.79
340 Technical Services	22,473.00	50,000.00		72,473.00
390 Other Purchased Professional and Technical Services	3,521.04	4,584.04	300.00	8,405.08
Total Purchased Professional and Technical Services	\$1,033,486.22	\$1,027,845.83	\$48,010.21	\$2,109,342.26
400 Purchased Property Services				
430 Repairs and Maintenance Services	61,751.57	58,586.74		120,338.31
440 Rentals	89,749.96	122,742.92	200.00	212,692.88
Total Purchased Property Services	\$151,501.53	\$181,329.66	\$200.00	\$333,031.19
500 Other Purchased Services				
510 Student Transportation Services	3,292.72	49,604.79	7,228.38	60,125.89
530 Communications	72,473.09	66,577.60	6.55	139,057.24
550 Printing and Binding	5,666.40	21,768.25	598.05	28,032.70
562 Tuition To Pennsylvania Charter Schools	3,419,364.84	3,274,771.49		6,694,136.33
580 Travel	4,434.64	26,795.75	7,836.46	39,066.85
Total Other Purchased Services	\$3,505,231.69	\$3,439,517.88	\$15,669.44	\$6,960,419.01
600 Supplies				
610 General Supplies	481,312.76	480,386.58	41,758.54	1,003,457.88
630 Food	4,671.52	2,659.41	3,552.25	10,883.18
640 Books and Periodicals	167,712.77	852,834.73	4,887.74	1,025,435.24
650 Supplies & Fees – Technology Related	241,537.87	211,701.99	25,465.27	478,705.13
Total Supplies	\$895,234.92	\$1,547,582.71	\$75,663.80	\$2,518,481.43
700 Property				
752 Capital Equipment – Original and Additional		5,196.67		5,196.67
758 Capitalized Technology Software - Original	24,452.65	23,653.45		48,106.10
762 Capitalized Equipment - Replacement		102,106.60		102,106.60

General Fund (10)

1100 Regular Programs – Elementary / Secondary	<u>Elementary</u>	<u>Secondary</u>	<u>Federal</u>	<u>Total</u>
700 Property				
768 Capitalized Technology Software - Replacement	382.59	16,717.09		17,099.68
Total Property	\$24,835.24	\$147,673.81		\$172,509.05
800 Other Objects				
810 Dues and Fees	1,336.65	65,780.25	2,229.35	69,346.25
Total Other Objects	\$1,336.65	\$65,780.25	\$2,229.35	\$69,346.25
Total 1100 Regular Programs – Elementary / Secondary	\$43,806,822.94	\$45,109,424.36	\$1,053,497.32	\$89,969,744.62

General Fund (10)

1110 Regular Programs

	<u>Elementary</u>	<u>Secondary</u>	<u>Federal</u>	<u>Total</u>
100 Personnel Services – Salaries				
100 Personnel Services – Salaries	23,822,975.74	24,431,659.99	6,417.78	48,261,053.51
Total Personnel Services – Salaries	\$23,822,975.74	\$24,431,659.99	\$6,417.78	\$48,261,053.51
200 Personnel Services – Employee Benefits				
210 Group Insurance – Contracted Provider	53,944.55	56,698.18	3.68	110,646.41
220 Social Security Contributions	1,738,773.52	1,795,690.86	445.28	3,534,909.66
230 PSERS Retirement Contributions	7,184,426.22	7,364,194.39	1,809.90	14,550,430.51
250 Unemployment Compensation	8,747.82	9,002.37		17,750.19
260 Workers' Compensation	244,776.53	251,905.24		496,681.77
270 Group Insurance – Self-Insurance	5,042,247.45	4,688,346.35		9,730,593.80
299 All Other Employee Benefits	99,304.86	102,196.84		201,501.70
Total Personnel Services – Employee Benefits	\$14,372,220.95	\$14,268,034.23	\$2,258.86	\$28,642,514.04
300 Purchased Professional and Technical Services				
310 Official / Administrative Services	24,139.80	23,119.01		47,258.81
322 Professional Educational Services – Ius	4,500.00			4,500.00
323 Professional Educational Services – Other Educational Agencies	19,599.59	18,288.24		37,887.83
324 Professional Educational Services – Employee Training and Development Services	5,468.51	11,826.12	22,222.83	39,517.46
329 Professional Educational Services – Other	907,818.81	876,006.68	8,656.68	1,792,482.17
330 Other Professional Services	45,965.47	44,021.74		89,987.21
340 Technical Services	22,473.00	50,000.00		72,473.00
390 Other Purchased Professional and Technical Services	3,521.04	4,584.04		8,105.08
Total Purchased Professional and Technical Services	\$1,033,486.22	\$1,027,845.83	\$30,879.51	\$2,092,211.56
400 Purchased Property Services				
430 Repairs and Maintenance Services	61,751.57	58,586.74		120,338.31
440 Rentals	89,749.96	122,742.92	200.00	212,692.88
Total Purchased Property Services	\$151,501.53	\$181,329.66	\$200.00	\$333,031.19
500 Other Purchased Services				
510 Student Transportation Services	3,292.72	49,604.79		52,897.51
530 Communications	72,473.09	66,577.60		139,050.69
550 Printing and Binding	5,666.40	21,768.25	598.05	28,032.70
562 Tuition To Pennsylvania Charter Schools	3,419,364.84	3,274,771.49		6,694,136.33
580 Travel	4,434.64	26,795.75	7,819.46	39,049.85
Total Other Purchased Services	\$3,505,231.69	\$3,439,517.88	\$8,417.51	\$6,953,167.08
600 Supplies				
610 General Supplies	481,312.76	480,386.58	(1.26)	961,698.08
630 Food	4,671.52	2,659.41		7,330.93
640 Books and Periodicals	167,712.77	852,834.73		1,020,547.50
650 Supplies & Fees – Technology Related	241,537.87	211,701.99		453,239.86
Total Supplies	\$895,234.92	\$1,547,582.71	(\$1.26)	\$2,442,816.37
700 Property				
752 Capital Equipment – Original and Additional		5,196.67		5,196.67
758 Capitalized Technology Software - Original	24,452.65	23,653.45		48,106.10
762 Capitalized Equipment - Replacement		102,106.60		102,106.60

LEA : 124159002 West Chester Area SD

Printed 12/29/2017 2:20:09 PM

General Fund (10)

1110 Regular Programs

	<u>Elementary</u>	<u>Secondary</u>	<u>Federal</u>	<u>Total</u>
700 Property				
768 Capitalized Technology Software - Replacement	382.59	16,717.09		17,099.68
Total Property	\$24,835.24	\$147,673.81		\$172,509.05
800 Other Objects				
810 Dues and Fees	1,336.65	65,780.25	144.00	67,260.90
Total Other Objects	\$1,336.65	\$65,780.25	\$144.00	\$67,260.90
Total 1110 Regular Programs	\$43,806,822.94	\$45,109,424.36	\$48,316.40	\$88,964,563.70

General Fund (10)

1190 Federally-Funded Regular Programs

	<u>Elementary</u>	<u>Secondary</u>	<u>Federal</u>	<u>Total</u>
100 Personnel Services – Salaries				
100 Personnel Services – Salaries			564,616.03	564,616.03
Total Personnel Services – Salaries			\$564,616.03	\$564,616.03
200 Personnel Services – Employee Benefits				
210 Group Insurance – Contracted Provider			999.85	999.85
220 Social Security Contributions			41,298.89	41,298.89
230 PSERS Retirement Contributions			169,357.69	169,357.69
270 Group Insurance – Self-Insurance			126,775.42	126,775.42
Total Personnel Services – Employee Benefits			\$338,431.85	\$338,431.85
300 Purchased Professional and Technical Services				
329 Professional Educational Services – Other			735.12	735.12
330 Other Professional Services			16,095.58	16,095.58
390 Other Purchased Professional and Technical Services			300.00	300.00
Total Purchased Professional and Technical Services			\$17,130.70	\$17,130.70
500 Other Purchased Services				
510 Student Transportation Services			7,228.38	7,228.38
530 Communications			6.55	6.55
580 Travel			17.00	17.00
Total Other Purchased Services			\$7,251.93	\$7,251.93
600 Supplies				
610 General Supplies			41,759.80	41,759.80
630 Food			3,552.25	3,552.25
640 Books and Periodicals			4,887.74	4,887.74
650 Supplies & Fees – Technology Related			25,465.27	25,465.27
Total Supplies			\$75,665.06	\$75,665.06
800 Other Objects				
810 Dues and Fees			2,085.35	2,085.35
Total Other Objects			\$2,085.35	\$2,085.35
Total 1190 Federally-Funded Regular Programs			\$1,005,180.92	\$1,005,180.92

General Fund (10)

1200 Special Programs – Elementary / Secondary

	<u>Elementary</u>	<u>Secondary</u>	<u>Federal</u>	<u>Total</u>
100 Personnel Services – Salaries				
100 Personnel Services – Salaries	6,214,463.79	5,820,740.63	43,094.60	12,078,299.02
Total Personnel Services – Salaries	\$6,214,463.79	\$5,820,740.63	\$43,094.60	\$12,078,299.02
200 Personnel Services – Employee Benefits				
210 Group Insurance – Contracted Provider	14,565.00	15,129.60	61.07	29,755.67
220 Social Security Contributions	444,242.04	421,725.94	3,057.50	869,025.48
230 PSERS Retirement Contributions	1,854,359.32	1,735,451.41	12,803.06	3,602,613.79
250 Unemployment Compensation	2,253.05	2,096.60		4,349.65
260 Workers' Compensation	63,046.09	58,667.38		121,713.47
270 Group Insurance – Self-Insurance	1,681,817.05	1,349,402.52	12,679.94	3,043,899.51
299 All Other Employee Benefits	25,577.53	23,801.08		49,378.61
Total Personnel Services – Employee Benefits	\$4,085,860.08	\$3,606,274.53	\$28,601.57	\$7,720,736.18
300 Purchased Professional and Technical Services				
322 Professional Educational Services – Ius	1,311,295.52	3,732,189.30	1,326,816.03	6,370,300.85
323 Professional Educational Services – Other Educational Agencies	647,962.94	1,024,072.85		1,672,035.79
324 Professional Educational Services – Employee Training and Development Services	7,246.21	6,939.79	1,449.94	15,635.94
329 Professional Educational Services – Other	2,428,380.27	2,326,147.80	208,824.94	4,963,353.01
330 Other Professional Services	588,956.58	607,466.52	48,486.19	1,244,909.29
340 Technical Services	127.70	122.30		250.00
Total Purchased Professional and Technical Services	\$4,983,969.22	\$7,696,938.56	\$1,585,577.10	\$14,266,484.88
400 Purchased Property Services				
440 Rentals	1,923.45	1,842.12		3,765.57
Total Purchased Property Services	\$1,923.45	\$1,842.12		\$3,765.57
500 Other Purchased Services				
510 Student Transportation Services	3,764.72	4,342.87		8,107.59
530 Communications	631.87	605.15		1,237.02
550 Printing and Binding	1,726.76	1,653.74		3,380.50
561 Tuition To Other School Districts Within the State	12,688.06	41,660.29		54,348.35
562 Tuition To Pennsylvania Charter Schools	1,596,100.17	1,528,606.51		3,124,706.68
563 Tuition To Nonpublic Schools	64,453.00	649,939.82		714,392.82
567 Tuition To Approved Private Schools (APS) and PA Chartered Schools for the Deaf and Blind	731,004.99	700,093.26		1,431,098.25
568 Tuition To Private Residential Rehabilitative Institutions (PRRI) [In-State] and Detention Centers	4,801.64	4,598.60		9,400.24
569 Tuition – Other	643,316.44	616,112.77		1,259,429.21
580 Travel	6,468.82	6,721.79	7,054.01	20,244.62
Total Other Purchased Services	\$3,064,956.47	\$3,554,334.80	\$7,054.01	\$6,626,345.28
600 Supplies				
610 General Supplies	33,443.10	67,822.17	108,753.06	210,018.33
640 Books and Periodicals	681.33	4,012.48	103.90	4,797.71
650 Supplies & Fees – Technology Related	510.80	489.20		1,000.00
Total Supplies	\$34,635.23	\$72,323.85	\$108,856.96	\$215,816.04
800 Other Objects				
810 Dues and Fees	3,085.52	5,868.13	7,343.00	16,296.65

General Fund (10)

1200 Special Programs – Elementary / Secondary

Elementary

Secondary

Federal

Total

800 Other Objects

890 Miscellaneous Expenditures

300.00

300.00

Total Other Objects

\$3,085.52

\$6,168.13

\$7,343.00

\$16,596.65

Total 1200 Special Programs – Elementary / Secondary

\$18,388,893.76

\$20,758,622.62

\$1,780,527.24

\$40,928,043.62

General Fund (10)

1210 Life Skills Support

	<u>Elementary</u>	<u>Secondary</u>	<u>Federal</u>	<u>Total</u>
100 Personnel Services – Salaries				
100 Personnel Services – Salaries	299,323.31	100,165.35		399,488.66
Total Personnel Services – Salaries	\$299,323.31	\$100,165.35		\$399,488.66
200 Personnel Services – Employee Benefits				
210 Group Insurance – Contracted Provider	703.43	169.24		872.67
220 Social Security Contributions	20,725.74	6,916.09		27,641.83
230 PSERS Retirement Contributions	89,892.08	30,081.52		119,973.60
250 Unemployment Compensation	112.24	37.50		149.74
260 Workers' Compensation	3,140.82	1,049.39		4,190.21
270 Group Insurance – Self-Insurance	88,045.10	34,051.25		122,096.35
299 All Other Employee Benefits	1,274.22	425.73		1,699.95
Total Personnel Services – Employee Benefits	\$203,893.63	\$72,730.72		\$276,624.35
300 Purchased Professional and Technical Services				
322 Professional Educational Services – lus		580,712.57	309,684.75	890,397.32
Total Purchased Professional and Technical Services		\$580,712.57	\$309,684.75	\$890,397.32
500 Other Purchased Services				
510 Student Transportation Services	917.81	292.25		1,210.06
Total Other Purchased Services	\$917.81	\$292.25		\$1,210.06
600 Supplies				
610 General Supplies	959.54	6,406.14	3,202.96	10,568.64
Total Supplies	\$959.54	\$6,406.14	\$3,202.96	\$10,568.64
800 Other Objects				
810 Dues and Fees		318.00		318.00
Total Other Objects		\$318.00		\$318.00
Total 1210 Life Skills Support	\$505,094.29	\$760,625.03	\$312,887.71	\$1,578,607.03

General Fund (10)

1220 Sensory Support

	<u>Elementary</u>	<u>Secondary</u>	<u>Federal</u>	<u>Total</u>
100 Personnel Services – Salaries				
100 Personnel Services – Salaries	502,559.05	481,307.53		983,866.58
Total Personnel Services – Salaries	\$502,559.05	\$481,307.53		\$983,866.58
200 Personnel Services – Employee Benefits				
210 Group Insurance – Contracted Provider	1,178.16	1,128.35		2,306.51
220 Social Security Contributions	37,327.54	35,749.08		73,076.62
230 PSERS Retirement Contributions	147,245.63	141,019.12		288,264.75
250 Unemployment Compensation	185.94	178.08		364.02
260 Workers' Compensation	5,203.00	4,982.98		10,185.98
270 Group Insurance – Self-Insurance	80,279.91	76,885.13		157,165.04
299 All Other Employee Benefits	2,110.84	2,021.57		4,132.41
Total Personnel Services – Employee Benefits	\$273,531.02	\$261,964.31		\$535,495.33
300 Purchased Professional and Technical Services				
322 Professional Educational Services – Ius	290,745.10	278,450.48	676,849.65	1,246,045.23
Total Purchased Professional and Technical Services	\$290,745.10	\$278,450.48	\$676,849.65	\$1,246,045.23
500 Other Purchased Services				
580 Travel	22.49	21.53	419.00	463.02
Total Other Purchased Services	\$22.49	\$21.53	\$419.00	\$463.02
600 Supplies				
610 General Supplies			5,125.55	5,125.55
Total Supplies			\$5,125.55	\$5,125.55
800 Other Objects				
810 Dues and Fees			1,068.00	1,068.00
Total Other Objects			\$1,068.00	\$1,068.00
Total 1220 Sensory Support	\$1,066,857.66	\$1,021,743.85	\$683,462.20	\$2,772,063.71

General Fund (10)

1230 Emotional Support

	<u>Elementary</u>	<u>Secondary</u>	<u>Federal</u>	<u>Total</u>
100 Personnel Services – Salaries				
100 Personnel Services – Salaries	971,507.05	876,081.15		1,847,588.20
Total Personnel Services – Salaries	\$971,507.05	\$876,081.15		\$1,847,588.20
200 Personnel Services – Employee Benefits				
210 Group Insurance – Contracted Provider	1,782.43	1,803.64		3,586.07
220 Social Security Contributions	67,884.80	63,410.47		131,295.27
230 PSERS Retirement Contributions	292,454.82	263,981.17		556,435.99
250 Unemployment Compensation	364.17	327.73		691.90
260 Workers' Compensation	10,190.77	9,170.95		19,361.72
270 Group Insurance – Self-Insurance	373,873.83	222,425.39		596,299.22
299 All Other Employee Benefits	4,134.36	3,720.60		7,854.96
Total Personnel Services – Employee Benefits	\$750,685.18	\$564,839.95		\$1,315,525.13
300 Purchased Professional and Technical Services				
322 Professional Educational Services – Ius	636.66	2,075,920.95	15,003.70	2,091,561.31
323 Professional Educational Services – Other Educational Agencies	105.00	403,610.62		403,715.62
324 Professional Educational Services – Employee Training and Development Services	1,287.73	1,233.27		2,521.00
Total Purchased Professional and Technical Services	\$2,029.39	\$2,480,764.84	\$15,003.70	\$2,497,797.93
500 Other Purchased Services				
510 Student Transportation Services	164.65	570.10		734.75
561 Tuition To Other School Districts Within the State	12,688.06	41,660.29		54,348.35
563 Tuition To Nonpublic Schools		12,420.00		12,420.00
Total Other Purchased Services	\$12,852.71	\$54,650.39		\$67,503.10
600 Supplies				
610 General Supplies	8,294.00	13,944.44	4,402.53	26,640.97
640 Books and Periodicals		471.38		471.38
Total Supplies	\$8,294.00	\$14,415.82	\$4,402.53	\$27,112.35
Total 1230 Emotional Support	\$1,745,368.33	\$3,990,752.15	\$19,406.23	\$5,755,526.71

General Fund (10)

1240 Academic Support

	<u>Elementary</u>	<u>Secondary</u>	<u>Federal</u>	<u>Total</u>
100 Personnel Services – Salaries				
100 Personnel Services – Salaries	3,655,963.66	3,533,364.14		7,189,327.80
Total Personnel Services – Salaries	\$3,655,963.66	\$3,533,364.14		\$7,189,327.80
200 Personnel Services – Employee Benefits				
210 Group Insurance – Contracted Provider	8,061.72	9,042.08		17,103.80
220 Social Security Contributions	260,556.65	255,304.50		515,861.15
230 PSERS Retirement Contributions	1,096,711.28	1,058,567.70		2,155,278.98
250 Unemployment Compensation	1,369.09	1,322.38		2,691.47
260 Workers' Compensation	38,310.32	37,002.74		75,313.06
270 Group Insurance – Self-Insurance	1,026,594.43	886,730.03		1,913,324.46
299 All Other Employee Benefits	15,542.32	15,011.86		30,554.18
Total Personnel Services – Employee Benefits	\$2,447,145.81	\$2,262,981.29		\$4,710,127.10
300 Purchased Professional and Technical Services				
322 Professional Educational Services – Ius		392,507.86	320,080.93	712,588.79
329 Professional Educational Services – Other	1,544.22	1,934.43		3,478.65
330 Other Professional Services		43,414.91		43,414.91
Total Purchased Professional and Technical Services	\$1,544.22	\$437,857.20	\$320,080.93	\$759,482.35
500 Other Purchased Services				
510 Student Transportation Services	753.13	1,733.09		2,486.22
530 Communications	104.14	99.73		203.87
563 Tuition To Nonpublic Schools	64,453.00	637,519.82		701,972.82
580 Travel	661.94	1,160.47		1,822.41
Total Other Purchased Services	\$65,972.21	\$640,513.11		\$706,485.32
600 Supplies				
610 General Supplies	13,775.52	37,038.37	40,892.64	91,706.53
640 Books and Periodicals	681.33	3,541.10	103.90	4,326.33
650 Supplies & Fees – Technology Related	510.80	489.20		1,000.00
Total Supplies	\$14,967.65	\$41,068.67	\$40,996.54	\$97,032.86
800 Other Objects				
810 Dues and Fees	2,683.02	5,391.63		8,074.65
890 Miscellaneous Expenditures		300.00		300.00
Total Other Objects	\$2,683.02	\$5,691.63		\$8,374.65
Total 1240 Academic Support	\$6,188,276.57	\$6,921,476.04	\$361,077.47	\$13,470,830.08

General Fund (10)

	<u>Elementary</u>	<u>Secondary</u>	<u>Federal</u>	<u>Total</u>
1241 Learning Support – Public				
100 Personnel Services – Salaries				
100 Personnel Services – Salaries	2,963,671.91	2,942,848.98		5,906,520.89
Total Personnel Services – Salaries	\$2,963,671.91	\$2,942,848.98		\$5,906,520.89
200 Personnel Services – Employee Benefits				
210 Group Insurance – Contracted Provider	6,470.47	6,688.37		13,158.84
220 Social Security Contributions	209,662.01	211,522.00		421,184.01
230 PSERS Retirement Contributions	888,740.91	881,165.40		1,769,906.31
250 Unemployment Compensation	1,110.40	1,101.81		2,212.21
260 Workers' Compensation	31,071.62	30,830.91		61,902.53
270 Group Insurance – Self-Insurance	900,291.96	780,395.99		1,680,687.95
299 All Other Employee Benefits	12,605.62	12,507.97		25,113.59
Total Personnel Services – Employee Benefits	\$2,049,952.99	\$1,924,212.45		\$3,974,165.44
300 Purchased Professional and Technical Services				
322 Professional Educational Services – lus		392,507.86	320,080.93	712,588.79
329 Professional Educational Services – Other		455.52		455.52
330 Other Professional Services		43,414.91		43,414.91
Total Purchased Professional and Technical Services		\$436,378.29	\$320,080.93	\$756,459.22
500 Other Purchased Services				
510 Student Transportation Services		102.73		102.73
563 Tuition To Nonpublic Schools	64,453.00	637,519.82		701,972.82
Total Other Purchased Services	\$64,453.00	\$637,622.55		\$702,075.55
600 Supplies				
610 General Supplies	1,507.50	23,547.36	40,892.64	65,947.50
640 Books and Periodicals		2,688.92	103.90	2,792.82
Total Supplies	\$1,507.50	\$26,236.28	\$40,996.54	\$68,740.32
800 Other Objects				
810 Dues and Fees	2,437.50	3,377.50		5,815.00
Total Other Objects	\$2,437.50	\$3,377.50		\$5,815.00
Total 1241 Learning Support – Public	\$5,082,022.90	\$5,970,676.05	\$361,077.47	\$11,413,776.42

General Fund (10)

1243 Gifted Support

	<u>Elementary</u>	<u>Secondary</u>	<u>Federal</u>	<u>Total</u>
100 Personnel Services – Salaries				
100 Personnel Services – Salaries	692,291.75	590,515.16		1,282,806.91
Total Personnel Services – Salaries	\$692,291.75	\$590,515.16		\$1,282,806.91
200 Personnel Services – Employee Benefits				
210 Group Insurance – Contracted Provider	1,591.25	2,353.71		3,944.96
220 Social Security Contributions	50,894.64	43,782.50		94,677.14
230 PSERS Retirement Contributions	207,970.37	177,402.30		385,372.67
250 Unemployment Compensation	258.69	220.57		479.26
260 Workers' Compensation	7,238.70	6,171.83		13,410.53
270 Group Insurance – Self-Insurance	126,302.47	106,334.04		232,636.51
299 All Other Employee Benefits	2,936.70	2,503.89		5,440.59
Total Personnel Services – Employee Benefits	\$397,192.82	\$338,768.84		\$735,961.66
300 Purchased Professional and Technical Services				
329 Professional Educational Services – Other	1,544.22	1,478.91		3,023.13
Total Purchased Professional and Technical Services	\$1,544.22	\$1,478.91		\$3,023.13
500 Other Purchased Services				
510 Student Transportation Services	753.13	1,630.36		2,383.49
530 Communications	104.14	99.73		203.87
580 Travel	661.94	1,160.47		1,822.41
Total Other Purchased Services	\$1,519.21	\$2,890.56		\$4,409.77
600 Supplies				
610 General Supplies	12,268.02	13,491.01		25,759.03
640 Books and Periodicals	681.33	852.18		1,533.51
650 Supplies & Fees – Technology Related	510.80	489.20		1,000.00
Total Supplies	\$13,460.15	\$14,832.39		\$28,292.54
800 Other Objects				
810 Dues and Fees	245.52	2,014.13		2,259.65
890 Miscellaneous Expenditures		300.00		300.00
Total Other Objects	\$245.52	\$2,314.13		\$2,559.65
Total 1243 Gifted Support	\$1,106,253.67	\$950,799.99		\$2,057,053.66

General Fund (10)

1260 Physical Support

300 Purchased Professional and Technical Services

322 Professional Educational Services – Ius

323 Professional Educational Services – Other Educational Agencies

Total Purchased Professional and Technical Services

600 Supplies

610 General Supplies

Total Supplies

Total 1260 Physical Support

	<u>Elementary</u>	<u>Secondary</u>	<u>Federal</u>	<u>Total</u>
	108,845.06	104,242.37		213,087.43
	481,661.78	461,293.94		942,955.72
	\$590,506.84	\$565,536.31		\$1,156,043.15
	2,096.97	2,008.28		4,105.25
	\$2,096.97	\$2,008.28		\$4,105.25
	\$592,603.81	\$567,544.59		\$1,160,148.40

General Fund (10)

1270 Multi-Handicapped Support

	<u>Elementary</u>	<u>Secondary</u>	<u>Federal</u>	<u>Total</u>
100 Personnel Services – Salaries				
100 Personnel Services – Salaries	83,853.33	4,852.43		88,705.76
Total Personnel Services – Salaries	\$83,853.33	\$4,852.43		\$88,705.76
200 Personnel Services – Employee Benefits				
210 Group Insurance – Contracted Provider	142.57	9.32		151.89
220 Social Security Contributions	6,115.70	344.20		6,459.90
230 PSERS Retirement Contributions	25,182.66	1,457.26		26,639.92
250 Unemployment Compensation	31.41	1.75		33.16
260 Workers' Compensation	878.97	49.02		927.99
270 Group Insurance – Self-Insurance	28,758.34	1,996.44		30,754.78
299 All Other Employee Benefits	356.59	19.89		376.48
Total Personnel Services – Employee Benefits	\$61,466.24	\$3,877.88		\$65,344.12
300 Purchased Professional and Technical Services				
322 Professional Educational Services – Ius	78,155.55	225,782.70		303,938.25
Total Purchased Professional and Technical Services	\$78,155.55	\$225,782.70		\$303,938.25
500 Other Purchased Services				
510 Student Transportation Services	149.63	43.18		192.81
Total Other Purchased Services	\$149.63	\$43.18		\$192.81
600 Supplies				
610 General Supplies	415.06	857.07	3,877.60	5,149.73
Total Supplies	\$415.06	\$857.07	\$3,877.60	\$5,149.73
800 Other Objects				
810 Dues and Fees	237.00			237.00
Total Other Objects	\$237.00			\$237.00
Total 1270 Multi-Handicapped Support	\$224,276.81	\$235,413.26	\$3,877.60	\$463,567.67

General Fund (10)

1280 Early Intervention Support

300 Purchased Professional and Technical Services

322 Professional Educational Services – lus

Total Purchased Professional and Technical Services

Total 1280 Early Intervention Support

	<u>Elementary</u>	<u>Secondary</u>	<u>Federal</u>	<u>Total</u>
	343,549.59		5,197.00	348,746.59
	\$343,549.59		\$5,197.00	\$348,746.59
	\$343,549.59		\$5,197.00	\$348,746.59

General Fund (10)

1290 Special Programs - Other Support

	<u>Elementary</u>	<u>Secondary</u>	<u>Federal</u>	<u>Total</u>
100 Personnel Services – Salaries				
100 Personnel Services – Salaries	701,257.39	824,970.03	43,094.60	1,569,322.02
Total Personnel Services – Salaries	\$701,257.39	\$824,970.03	\$43,094.60	\$1,569,322.02
200 Personnel Services – Employee Benefits				
210 Group Insurance – Contracted Provider	2,696.69	2,976.97	61.07	5,734.73
220 Social Security Contributions	51,631.61	60,001.60	3,057.50	114,690.71
230 PSERS Retirement Contributions	202,872.85	240,344.64	12,803.06	456,020.55
250 Unemployment Compensation	190.20	229.16		419.36
260 Workers' Compensation	5,322.21	6,412.30		11,734.51
270 Group Insurance – Self-Insurance	84,265.44	127,314.28	12,679.94	224,259.66
299 All Other Employee Benefits	2,159.20	2,601.43		4,760.63
Total Personnel Services – Employee Benefits	\$349,138.20	\$439,880.38	\$28,601.57	\$817,620.15
300 Purchased Professional and Technical Services				
322 Professional Educational Services – Ius	489,363.56	74,572.37		563,935.93
323 Professional Educational Services – Other Educational Agencies	166,196.16	159,168.29		325,364.45
324 Professional Educational Services – Employee Training and Development Services	5,958.48	5,706.52	1,449.94	13,114.94
329 Professional Educational Services – Other	2,426,836.05	2,324,213.37	208,824.94	4,959,874.36
330 Other Professional Services	588,956.58	564,051.61	48,486.19	1,201,494.38
340 Technical Services	127.70	122.30		250.00
Total Purchased Professional and Technical Services	\$3,677,438.53	\$3,127,834.46	\$258,761.07	\$7,064,034.06
400 Purchased Property Services				
440 Rentals	1,923.45	1,842.12		3,765.57
Total Purchased Property Services	\$1,923.45	\$1,842.12		\$3,765.57
500 Other Purchased Services				
510 Student Transportation Services	1,779.50	1,704.25		3,483.75
530 Communications	527.73	505.42		1,033.15
550 Printing and Binding	1,726.76	1,653.74		3,380.50
562 Tuition To Pennsylvania Charter Schools	1,596,100.17	1,528,606.51		3,124,706.68
567 Tuition To Approved Private Schools (APS) and PA Chartered Schools for the Deaf and Blind	731,004.99	700,093.26		1,431,098.25
568 Tuition To Private Residential Rehabilitative Institutions (PRRI) [In-State] and Detention Centers	4,801.64	4,598.60		9,400.24
569 Tuition – Other	643,316.44	616,112.77		1,259,429.21
580 Travel	5,784.39	5,539.79	6,635.01	17,959.19
Total Other Purchased Services	\$2,985,041.62	\$2,858,814.34	\$6,635.01	\$5,850,490.97
600 Supplies				
610 General Supplies	7,902.01	7,567.87	51,251.78	66,721.66
Total Supplies	\$7,902.01	\$7,567.87	\$51,251.78	\$66,721.66
800 Other Objects				
810 Dues and Fees	165.50	158.50	6,275.00	6,599.00
Total Other Objects	\$165.50	\$158.50	\$6,275.00	\$6,599.00
Total 1290 Special Programs - Other Support	\$7,722,866.70	\$7,261,067.70	\$394,619.03	\$15,378,553.43

General Fund (10)

1300 Vocational Education

	<u>Elementary</u>	<u>Secondary</u>	<u>Federal</u>	<u>Total</u>
100 Personnel Services – Salaries				
100 Personnel Services – Salaries		2,071,811.19		2,071,811.19
Total Personnel Services – Salaries		\$2,071,811.19		\$2,071,811.19
200 Personnel Services – Employee Benefits				
210 Group Insurance – Contracted Provider		6,365.37		6,365.37
220 Social Security Contributions		150,734.90		150,734.90
230 PSERS Retirement Contributions		622,201.38		622,201.38
250 Unemployment Compensation		776.92		776.92
260 Workers' Compensation		21,740.03		21,740.03
270 Group Insurance – Self-Insurance		414,353.25		414,353.25
299 All Other Employee Benefits		8,819.84		8,819.84
Total Personnel Services – Employee Benefits		\$1,224,991.69		\$1,224,991.69
300 Purchased Professional and Technical Services				
324 Professional Educational Services – Employee Training and Development Services		295.00		295.00
329 Professional Educational Services – Other		1,616.72		1,616.72
Total Purchased Professional and Technical Services		\$1,911.72		\$1,911.72
500 Other Purchased Services				
510 Student Transportation Services		3,726.54		3,726.54
564 Tuition To Career and Technology Centers		2,722,372.00		2,722,372.00
580 Travel		16,287.19		16,287.19
Total Other Purchased Services		\$2,742,385.73		\$2,742,385.73
600 Supplies				
610 General Supplies		101,776.03		101,776.03
640 Books and Periodicals		9,714.53		9,714.53
Total Supplies		\$111,490.56		\$111,490.56
800 Other Objects				
810 Dues and Fees		2,583.00		2,583.00
Total Other Objects		\$2,583.00		\$2,583.00
Total 1300 Vocational Education		\$6,155,173.89		\$6,155,173.89

General Fund (10)

	<u>Elementary</u>	<u>Secondary</u>	<u>Federal</u>	<u>Total</u>
1400 Other Instructional Programs – Elementary / Secondary				
100 Personnel Services – Salaries				
100 Personnel Services – Salaries	64,807.15	38,552.98		103,360.13
Total Personnel Services – Salaries	\$64,807.15	\$38,552.98		\$103,360.13
200 Personnel Services – Employee Benefits				
210 Group Insurance – Contracted Provider	0.02	10.12		10.14
220 Social Security Contributions	4,972.83	2,938.45		7,911.28
230 PSERS Retirement Contributions	19,483.80	12,320.48		31,804.28
Total Personnel Services – Employee Benefits	\$24,456.65	\$15,269.05		\$39,725.70
300 Purchased Professional and Technical Services				
322 Professional Educational Services – Ius	6,829.65	45,836.90		52,666.55
323 Professional Educational Services – Other Educational Agencies		393,626.63		393,626.63
Total Purchased Professional and Technical Services	\$6,829.65	\$439,463.53		\$446,293.18
400 Purchased Property Services				
440 Rentals		62,444.77		62,444.77
Total Purchased Property Services		\$62,444.77		\$62,444.77
500 Other Purchased Services				
561 Tuition To Other School Districts Within the State	4,885.40	11,251.22		16,136.62
563 Tuition To Nonpublic Schools		13,088.00		13,088.00
569 Tuition – Other		5,573.75		5,573.75
Total Other Purchased Services	\$4,885.40	\$29,912.97		\$34,798.37
600 Supplies				
610 General Supplies	2,479.34			2,479.34
Total Supplies	\$2,479.34			\$2,479.34
Total 1400 Other Instructional Programs – Elementary / Secondary	\$103,458.19	\$585,643.30		\$689,101.49

General Fund (10)

1420 Summer School

	<u>Elementary</u>	<u>Secondary</u>	<u>Federal</u>	<u>Total</u>
100 Personnel Services – Salaries				
100 Personnel Services – Salaries	64,807.15	34,303.98		99,111.13
Total Personnel Services – Salaries	\$64,807.15	\$34,303.98		\$99,111.13
200 Personnel Services – Employee Benefits				
210 Group Insurance – Contracted Provider	0.02	2.13		2.15
220 Social Security Contributions	4,972.83	2,622.74		7,595.57
230 PSERS Retirement Contributions	19,483.80	11,024.85		30,508.65
Total Personnel Services – Employee Benefits	\$24,456.65	\$13,649.72		\$38,106.37
500 Other Purchased Services				
569 Tuition – Other		5,573.75		5,573.75
Total Other Purchased Services		\$5,573.75		\$5,573.75
600 Supplies				
610 General Supplies	2,479.34			2,479.34
Total Supplies	\$2,479.34			\$2,479.34
Total 1420 Summer School	\$91,743.14	\$53,527.45		\$145,270.59

General Fund (10)

1430 Homebound Instruction

100 Personnel Services – Salaries

100 Personnel Services – Salaries

Total Personnel Services – Salaries

200 Personnel Services – Employee Benefits

210 Group Insurance – Contracted Provider

220 Social Security Contributions

230 PSERS Retirement Contributions

Total Personnel Services – Employee Benefits

500 Other Purchased Services

563 Tuition To Nonpublic Schools

Total Other Purchased Services

Total 1430 Homebound Instruction

	<u>Elementary</u>	<u>Secondary</u>	<u>Federal</u>	<u>Total</u>
		4,249.00		4,249.00
		\$4,249.00		\$4,249.00
		7.99		7.99
		315.71		315.71
		1,295.63		1,295.63
		\$1,619.33		\$1,619.33
		13,088.00		13,088.00
		\$13,088.00		\$13,088.00
		\$18,956.33		\$18,956.33

General Fund (10)

	<u>Elementary</u>	<u>Secondary</u>	<u>Federal</u>	<u>Total</u>
1440 Alternative Regular Education Programs				
300 <u>Purchased Professional and Technical Services</u>				
322 Professional Educational Services – Ius	6,829.65	34,982.06		41,811.71
323 Professional Educational Services – Other Educational Agencies		393,626.63		393,626.63
Total Purchased Professional and Technical Services	\$6,829.65	\$428,608.69		\$435,438.34
400 <u>Purchased Property Services</u>				
440 Rentals		62,444.77		62,444.77
Total Purchased Property Services		\$62,444.77		\$62,444.77
500 <u>Other Purchased Services</u>				
561 Tuition To Other School Districts Within the State	4,885.40	4,678.82		9,564.22
Total Other Purchased Services	\$4,885.40	\$4,678.82		\$9,564.22
Total 1440 Alternative Regular Education Programs	\$11,715.05	\$495,732.28		\$507,447.33

General Fund (10)

	<u>Elementary</u>	<u>Secondary</u>	<u>Federal</u>	<u>Total</u>
1441 Adjudicated / Court-Placed Programs				
300 <u>Purchased Professional and Technical Services</u>				
322 Professional Educational Services – lus	6,829.65	6,540.85		13,370.50
Total Purchased Professional and Technical Services	\$6,829.65	\$6,540.85		\$13,370.50
500 <u>Other Purchased Services</u>				
561 Tuition To Other School Districts Within the State	4,885.40	4,678.82		9,564.22
Total Other Purchased Services	\$4,885.40	\$4,678.82		\$9,564.22
Total 1441 Adjudicated / Court-Placed Programs	\$11,715.05	\$11,219.67		\$22,934.72

LEA : 124159002 West Chester Area SD

Printed 12/29/2017 2:20:09 PM

Page - 26 of 28

General Fund (10)

	<u>Elementary</u>	<u>Secondary</u>	<u>Federal</u>	<u>Total</u>
1442 Alternative Education Programs				
300 <u>Purchased Professional and Technical Services</u>				
322 Professional Educational Services – lus		28,441.21		28,441.21
323 Professional Educational Services – Other Educational Agencies		393,626.63		393,626.63
Total Purchased Professional and Technical Services		\$422,067.84		\$422,067.84
400 <u>Purchased Property Services</u>				
440 Rentals		62,444.77		62,444.77
Total Purchased Property Services		\$62,444.77		\$62,444.77
Total 1442 Alternative Education Programs		\$484,512.61		\$484,512.61

General Fund (10)

1490 Additional Other Instructional Programs

Elementary

Secondary

Federal

Total

300 Purchased Professional and Technical Services

322 Professional Educational Services – lus

10,854.84

10,854.84

Total Purchased Professional and Technical Services

\$10,854.84

\$10,854.84

500 Other Purchased Services

561 Tuition To Other School Districts Within the State

6,572.40

6,572.40

Total Other Purchased Services

\$6,572.40

\$6,572.40

Total 1490 Additional Other Instructional Programs

\$17,427.24

\$17,427.24

General Fund (10)

1500 Nonpublic School Programs

300 Purchased Professional and Technical Services

322 Professional Educational Services – lus

Total Purchased Professional and Technical Services

Total 1500 Nonpublic School Programs

Elementary

Secondary

Federal

Total

52,225.09

52,225.09

\$52,225.09

\$52,225.09

\$52,225.09

\$52,225.09

General Fund (10)

2000 Support Services

Total

100 Personnel Services – Salaries

100 Personnel Services – Salaries 25,377,574.58

Total Personnel Services – Salaries \$25,377,574.58

200 Personnel Services – Employee Benefits

210 Group Insurance – Contracted Provider 83,480.49

220 Social Security Contributions 1,803,582.79

230 PSERS Retirement Contributions 7,464,697.41

240 Tuition Reimbursement 442,433.11

250 Unemployment Compensation 9,286.45

260 Workers' Compensation 259,855.54

270 Group Insurance – Self-Insurance 4,905,040.88

299 All Other Employee Benefits 105,422.29

Total Personnel Services – Employee Benefits \$15,073,798.96

300 Purchased Professional and Technical Services

310 Official / Administrative Services 654,784.25

322 Professional Educational Services – Ius 70,255.68

323 Professional Educational Services – Other Educational Agencies 250.00

324 Professional Educational Services – Employee Training and Development Services 58,551.91

329 Professional Educational Services – Other 367,534.21

330 Other Professional Services 489,572.37

340 Technical Services 11,002.19

350 Security / Safety Services 8,453.78

390 Other Purchased Professional and Technical Services 137,583.45

Total Purchased Professional and Technical Services \$1,797,987.84

400 Purchased Property Services

420 Utility Services 2,321,698.20

430 Repairs and Maintenance Services 1,125,509.02

440 Rentals 21,401.01

Total Purchased Property Services \$3,468,608.23

500 Other Purchased Services

510 Student Transportation Services 272.82

513 Contracted Carriers 13,158,967.96

516 Student Transportation Services From the IU 9,566.76

520 Insurance – General 108,042.21

521 Fire Insurance 164,320.00

522 Automotive Liability Insurance 47,650.00

523 General Property and Liability Insurance 133,314.00

529 Other Insurance 9,900.00

530 Communications 349,273.60

549 Other Advertising/Public Relations 8,396.18

550 Printing and Binding 39,079.34

580 Travel 65,631.92

592 Services Purchased From Another LEA Within the State 21,489.94

595 IU Payments By Withholding 128,218.87

General Fund (10)

2000 Support Services

Total

Total Other Purchased Services **\$14,244,123.60**

600 Supplies

610 General Supplies	1,122,535.53
620 Energy	605,323.63
630 Food	35,365.52
640 Books and Periodicals	141,849.87
650 Supplies & Fees – Technology Related	109,588.67

Total Supplies **\$2,014,663.22**

700 Property

752 Capital Equipment – Original and Additional	106,025.77
758 Capitalized Technology Software - Original	3,089.62
762 Capitalized Equipment - Replacement	111,237.34
768 Capitalized Technology Software - Replacement	151.20

Total Property **\$220,503.93**

800 Other Objects

810 Dues and Fees	144,786.62
899 Pass-Through Funds	101,455.27

Total Other Objects **\$246,241.89**

Total 2000 Support Services **\$62,443,502.25**

General Fund (10)

	<u>Elementary</u>	<u>Secondary</u>	<u>Federal</u>	<u>Total</u>
2100 Support Services – Students				
100 Personnel Services – Salaries				
100 Personnel Services – Salaries	2,050,820.91	2,586,946.03	392.01	5,271,544.92
Total Personnel Services – Salaries	\$2,050,820.91	\$2,586,946.03	\$392.01	\$5,271,544.92
200 Personnel Services – Employee Benefits				
210 Group Insurance – Contracted Provider	6,917.16	7,312.06		15,700.87
220 Social Security Contributions	149,534.99	187,429.21		381,859.30
230 PSERS Retirement Contributions	612,106.40	776,191.63		1,578,112.19
250 Unemployment Compensation	749.08	950.42		1,935.70
260 Workers' Compensation	20,961.77	26,594.52		54,166.04
270 Group Insurance – Self-Insurance	338,843.03	517,611.72		1,050,576.26
299 All Other Employee Benefits	8,504.08	10,789.28		21,974.93
Total Personnel Services – Employee Benefits	\$1,137,616.51	\$1,526,878.84		\$3,104,325.29
300 Purchased Professional and Technical Services				
322 Professional Educational Services – Ius	35,886.60	34,369.08		70,255.68
324 Professional Educational Services – Employee Training and Development Services		977.98		977.98
329 Professional Educational Services – Other	20,507.93	46,807.41		67,315.34
340 Technical Services	196.15	187.85		384.00
390 Other Purchased Professional and Technical Services	27,260.72	26,107.95		55,914.41
Total Purchased Professional and Technical Services	\$83,851.40	\$108,450.27		\$194,847.41
500 Other Purchased Services				
510 Student Transportation Services	139.36	133.46		272.82
530 Communications	2,729.56	2,614.14		9,071.94
549 Other Advertising/Public Relations	463.30	443.70		907.00
550 Printing and Binding	4,251.15	4,071.39		8,322.54
580 Travel	683.62	1,211.77	1,748.42	7,111.59
Total Other Purchased Services	\$8,266.99	\$8,474.46	\$1,748.42	\$25,685.89
600 Supplies				
610 General Supplies	37,153.10	45,752.77	857.74	84,750.47
630 Food	81.00	77.59		158.59
640 Books and Periodicals		136.29		136.29
650 Supplies & Fees – Technology Related		1,258.66		1,258.66
Total Supplies	\$37,234.10	\$47,225.31	\$857.74	\$86,304.01
800 Other Objects				
810 Dues and Fees	689.07	2,391.93	1,084.22	4,165.22
Total Other Objects	\$689.07	\$2,391.93	\$1,084.22	\$4,165.22
Total 2100 Support Services – Students	\$3,318,478.98	\$4,280,366.84	\$4,082.39	\$8,686,872.74

General Fund (10)

	<u>Elementary</u>	<u>Secondary</u>	<u>Federal</u>	<u>Total</u>
2110 Supervision of Student Services				
100 Personnel Services – Salaries				
100 Personnel Services – Salaries	188,843.11	180,857.57		369,700.68
Total Personnel Services – Salaries	\$188,843.11	\$180,857.57		\$369,700.68
200 Personnel Services – Employee Benefits				
210 Group Insurance – Contracted Provider	2,060.90	1,973.74		4,034.64
220 Social Security Contributions	12,215.78	11,699.22		23,915.00
230 PSERS Retirement Contributions	55,760.96	53,403.02		109,163.98
250 Unemployment Compensation	70.70	67.71		138.41
260 Workers' Compensation	1,978.32	1,894.66		3,872.98
270 Group Insurance – Self-Insurance	34,848.53	33,374.90		68,223.43
299 All Other Employee Benefits	802.60	768.65		1,571.25
Total Personnel Services – Employee Benefits	\$107,737.79	\$103,181.90		\$210,919.69
300 Purchased Professional and Technical Services				
329 Professional Educational Services – Other	10,291.93	9,856.71		20,148.64
Total Purchased Professional and Technical Services	\$10,291.93	\$9,856.71		\$20,148.64
500 Other Purchased Services				
530 Communications	2,478.37	2,373.58		4,851.95
580 Travel	507.26	485.80	416.02	1,409.08
Total Other Purchased Services	\$2,985.63	\$2,859.38	\$416.02	\$6,261.03
600 Supplies				
630 Food	48.90	46.84		95.74
Total Supplies	\$48.90	\$46.84		\$95.74
Total 2110 Supervision of Student Services	\$309,907.36	\$296,802.40	\$416.02	\$607,125.78

General Fund (10)

	<u>Elementary</u>	<u>Secondary</u>	<u>Federal</u>	<u>Total</u>
2111 Supervision of Student Services – Head of Component				
100 Personnel Services – Salaries				
100 Personnel Services – Salaries	114,149.35	109,322.36		223,471.71
Total Personnel Services – Salaries	\$114,149.35	\$109,322.36		\$223,471.71
200 Personnel Services – Employee Benefits				
210 Group Insurance – Contracted Provider	1,112.69	1,065.64		2,178.33
220 Social Security Contributions	6,754.96	6,469.31		13,224.27
230 PSERS Retirement Contributions	33,311.38	31,902.75		65,214.13
250 Unemployment Compensation	42.73	40.93		83.66
260 Workers' Compensation	1,195.77	1,145.20		2,340.97
270 Group Insurance – Self-Insurance	17,097.11	16,374.13		33,471.24
299 All Other Employee Benefits	485.12	464.60		949.72
Total Personnel Services – Employee Benefits	\$59,999.76	\$57,462.56		\$117,462.32
500 Other Purchased Services				
530 Communications	214.48	205.42		419.90
Total Other Purchased Services	\$214.48	\$205.42		\$419.90
Total 2111 Supervision of Student Services – Head of Component	\$174,363.59	\$166,990.34		\$341,353.93

General Fund (10)

2119 Supervision of Student Services – All Other Supervision

	<u>Elementary</u>	<u>Secondary</u>	<u>Federal</u>	<u>Total</u>
100 Personnel Services – Salaries				
100 Personnel Services – Salaries	74,693.76	71,535.21		146,228.97
Total Personnel Services – Salaries	\$74,693.76	\$71,535.21		\$146,228.97
200 Personnel Services – Employee Benefits				
210 Group Insurance – Contracted Provider	948.21	908.10		1,856.31
220 Social Security Contributions	5,460.82	5,229.91		10,690.73
230 PSERS Retirement Contributions	22,449.58	21,500.27		43,949.85
250 Unemployment Compensation	27.97	26.78		54.75
260 Workers' Compensation	782.55	749.46		1,532.01
270 Group Insurance – Self-Insurance	17,751.42	17,000.77		34,752.19
299 All Other Employee Benefits	317.48	304.05		621.53
Total Personnel Services – Employee Benefits	\$47,738.03	\$45,719.34		\$93,457.37
300 Purchased Professional and Technical Services				
329 Professional Educational Services – Other	10,291.93	9,856.71		20,148.64
Total Purchased Professional and Technical Services	\$10,291.93	\$9,856.71		\$20,148.64
500 Other Purchased Services				
530 Communications	2,263.89	2,168.16		4,432.05
580 Travel	507.26	485.80	416.02	1,409.08
Total Other Purchased Services	\$2,771.15	\$2,653.96	\$416.02	\$5,841.13
600 Supplies				
630 Food	48.90	46.84		95.74
Total Supplies	\$48.90	\$46.84		\$95.74
Total 2119 Supervision of Student Services – All Other Supervision	\$135,543.77	\$129,812.06	\$416.02	\$265,771.85

General Fund (10)

	<u>Elementary</u>	<u>Secondary</u>	<u>Federal</u>	<u>Total</u>
2120 Guidance Services				
100 Personnel Services – Salaries				
100 Personnel Services – Salaries	1,069,230.44	1,921,504.63	392.01	2,991,127.08
Total Personnel Services – Salaries	\$1,069,230.44	\$1,921,504.63	\$392.01	\$2,991,127.08
200 Personnel Services – Employee Benefits				
210 Group Insurance – Contracted Provider	3,240.95	4,568.01		7,808.96
220 Social Security Contributions	78,499.24	139,908.23		218,407.47
230 PSERS Retirement Contributions	321,447.50	576,849.29		898,296.79
250 Unemployment Compensation	392.73	712.25		1,104.98
260 Workers' Compensation	10,989.60	19,930.34		30,919.94
270 Group Insurance – Self-Insurance	189,543.89	388,912.14		578,456.03
299 All Other Employee Benefits	4,458.41	8,085.66		12,544.07
Total Personnel Services – Employee Benefits	\$608,572.32	\$1,138,965.92		\$1,747,538.24
300 Purchased Professional and Technical Services				
324 Professional Educational Services – Employee Training and Development Services		977.98		977.98
329 Professional Educational Services – Other		27,166.70		27,166.70
Total Purchased Professional and Technical Services		\$28,144.68		\$28,144.68
500 Other Purchased Services				
580 Travel		557.07	963.82	1,520.89
Total Other Purchased Services		\$557.07	\$963.82	\$1,520.89
600 Supplies				
610 General Supplies	16,439.88	25,915.45		42,355.33
640 Books and Periodicals		136.29		136.29
650 Supplies & Fees – Technology Related		1,258.66		1,258.66
Total Supplies	\$16,439.88	\$27,310.40		\$43,750.28
800 Other Objects				
810 Dues and Fees		1,732.00	290.22	2,022.22
Total Other Objects		\$1,732.00	\$290.22	\$2,022.22
Total 2120 Guidance Services	\$1,694,242.64	\$3,118,214.70	\$1,646.05	\$4,814,103.39

General Fund (10)

2130 Attendance Services

Elementary

Secondary

Federal

Total

100 Personnel Services – Salaries

100 Personnel Services – Salaries

176,301.33

Total Personnel Services – Salaries

\$176,301.33

200 Personnel Services – Employee Benefits

210 Group Insurance – Contracted Provider

226.79

220 Social Security Contributions

11,617.82

230 PSERS Retirement Contributions

52,946.42

250 Unemployment Compensation

65.02

260 Workers' Compensation

1,819.35

270 Group Insurance – Self-Insurance

76,257.27

299 All Other Employee Benefits

738.12

Total Personnel Services – Employee Benefits

\$143,670.79

Total 2130 Attendance Services

\$319,972.12

General Fund (10)

2140 Psychological Services

	<u>Elementary</u>	<u>Secondary</u>	<u>Federal</u>	<u>Total</u>
100 Personnel Services – Salaries				
100 Personnel Services – Salaries	792,729.69	413,086.36		1,205,816.05
Total Personnel Services – Salaries	\$792,729.69	\$413,086.36		\$1,205,816.05
200 Personnel Services – Employee Benefits				
210 Group Insurance – Contracted Provider	1,615.31	664.44		2,279.75
220 Social Security Contributions	58,818.61	30,680.43		89,499.04
230 PSERS Retirement Contributions	234,892.63	124,467.40		359,360.03
250 Unemployment Compensation	285.65	143.81		429.46
260 Workers' Compensation	7,993.85	4,023.88		12,017.73
270 Group Insurance – Self-Insurance	114,450.61	74,001.14		188,451.75
299 All Other Employee Benefits	3,243.07	1,632.47		4,875.54
Total Personnel Services – Employee Benefits	\$421,299.73	\$235,613.57		\$656,913.30
300 Purchased Professional and Technical Services				
322 Professional Educational Services – Ius	35,886.60	34,369.08		70,255.68
390 Other Purchased Professional and Technical Services	27,260.72	26,107.95		53,368.67
Total Purchased Professional and Technical Services	\$63,147.32	\$60,477.03		\$123,624.35
500 Other Purchased Services				
580 Travel	176.36	168.90	99.99	445.25
Total Other Purchased Services	\$176.36	\$168.90	\$99.99	\$445.25
600 Supplies				
610 General Supplies	20,713.22	19,837.32		40,550.54
630 Food	32.10	30.75		62.85
Total Supplies	\$20,745.32	\$19,868.07		\$40,613.39
800 Other Objects				
810 Dues and Fees	689.07	659.93	709.00	2,058.00
Total Other Objects	\$689.07	\$659.93	\$709.00	\$2,058.00
Total 2140 Psychological Services	\$1,298,787.49	\$729,873.86	\$808.99	\$2,029,470.34

General Fund (10)

2160 Social Work Services

Elementary Secondary Federal Total

100	<u>Personnel Services – Salaries</u>			
	100 Personnel Services – Salaries			457,084.64
Total Personnel Services – Salaries				\$457,084.64
200	<u>Personnel Services – Employee Benefits</u>			
	210 Group Insurance – Contracted Provider			1,244.86
	220 Social Security Contributions			33,277.28
	230 PSERS Retirement Contributions			136,867.74
	250 Unemployment Compensation			171.18
	260 Workers' Compensation			4,790.40
	270 Group Insurance – Self-Insurance			117,864.24
	299 All Other Employee Benefits			1,943.45
Total Personnel Services – Employee Benefits				\$296,159.15
300	<u>Purchased Professional and Technical Services</u>			
	390 Other Purchased Professional and Technical Services			2,545.74
Total Purchased Professional and Technical Services				\$2,545.74
500	<u>Other Purchased Services</u>			
	530 Communications			3,728.24
	580 Travel		268.59	3,736.37
Total Other Purchased Services				\$268.59 \$7,464.61
600	<u>Supplies</u>			
	610 General Supplies		857.74	1,844.60
Total Supplies				\$857.74 \$1,844.60
800	<u>Other Objects</u>			
	810 Dues and Fees		85.00	85.00
Total Other Objects				\$85.00 \$85.00
Total 2160 Social Work Services				\$1,211.33 \$765,183.74

General Fund (10)

2190 Other Student Services

	<u>Elementary</u>	<u>Secondary</u>	<u>Federal</u>	<u>Total</u>
100 Personnel Services – Salaries				
100 Personnel Services – Salaries	17.67	71,497.47		71,515.14
Total Personnel Services – Salaries	\$17.67	\$71,497.47		\$71,515.14
200 Personnel Services – Employee Benefits				
210 Group Insurance – Contracted Provider		105.87		105.87
220 Social Security Contributions	1.36	5,141.33		5,142.69
230 PSERS Retirement Contributions	5.31	21,471.92		21,477.23
250 Unemployment Compensation		26.65		26.65
260 Workers' Compensation		745.64		745.64
270 Group Insurance – Self-Insurance		21,323.54		21,323.54
299 All Other Employee Benefits		302.50		302.50
Total Personnel Services – Employee Benefits	\$6.67	\$49,117.45		\$49,124.12
300 Purchased Professional and Technical Services				
329 Professional Educational Services – Other	10,216.00	9,784.00		20,000.00
340 Technical Services	196.15	187.85		384.00
Total Purchased Professional and Technical Services	\$10,412.15	\$9,971.85		\$20,384.00
500 Other Purchased Services				
510 Student Transportation Services	139.36	133.46		272.82
530 Communications	251.19	240.56		491.75
549 Other Advertising/Public Relations	463.30	443.70		907.00
550 Printing and Binding	4,251.15	4,071.39		8,322.54
Total Other Purchased Services	\$5,105.00	\$4,889.11		\$9,994.11
Total 2190 Other Student Services	\$15,541.49	\$135,475.88		\$151,017.37

General Fund (10)

	<u>Elementary</u>	<u>Secondary</u>	<u>Federal</u>	<u>Total</u>
2200 Support Services – Instructional Staff				
100 Personnel Services – Salaries				
100 Personnel Services – Salaries	1,595,751.90	1,203,429.87	58,515.99	2,857,697.76
Total Personnel Services – Salaries	\$1,595,751.90	\$1,203,429.87	\$58,515.99	\$2,857,697.76
200 Personnel Services – Employee Benefits				
210 Group Insurance – Contracted Provider	7,397.36	6,056.04	42.90	13,496.30
220 Social Security Contributions	113,310.18	84,899.51	4,310.82	202,520.51
230 PSERS Retirement Contributions	474,577.52	356,973.59	17,744.86	849,295.97
240 Tuition Reimbursement	225,994.83	216,438.28		442,433.11
250 Unemployment Compensation	597.63	450.58		1,048.21
260 Workers' Compensation	16,723.52	12,608.49		29,332.01
270 Group Insurance – Self-Insurance	319,597.01	236,289.02		555,886.03
299 All Other Employee Benefits	6,784.67	5,115.21		11,899.88
Total Personnel Services – Employee Benefits	\$1,164,982.72	\$918,830.72	\$22,098.58	\$2,105,912.02
300 Purchased Professional and Technical Services				
323 Professional Educational Services – Other Educational Agencies	127.70	122.30		250.00
324 Professional Educational Services – Employee Training and Development Services	471.47	451.53	50,303.78	51,226.78
329 Professional Educational Services – Other	9,647.18	1,582.02	147,923.52	159,152.72
340 Technical Services		3,669.74		3,669.74
390 Other Purchased Professional and Technical Services		800.00		800.00
Total Purchased Professional and Technical Services	\$10,246.35	\$6,625.59	\$198,227.30	\$215,099.24
400 Purchased Property Services				
430 Repairs and Maintenance Services	255.28	244.48		499.76
440 Rentals	1,968.72	1,885.48	800.00	4,654.20
Total Purchased Property Services	\$2,224.00	\$2,129.96	\$800.00	\$5,153.96
500 Other Purchased Services				
530 Communications	2,493.49	2,807.94		5,301.43
550 Printing and Binding	808.60	774.40	121.80	1,704.80
580 Travel	4,162.93	5,520.06	14,463.03	24,146.02
592 Services Purchased From Another LEA Within the State			21,489.94	21,489.94
Total Other Purchased Services	\$7,465.02	\$9,102.40	\$36,074.77	\$52,642.19
600 Supplies				
610 General Supplies	15,119.77	49,641.87	1,178.63	65,940.27
630 Food	1,297.33	1,242.46	6,062.02	8,601.81
640 Books and Periodicals	59,758.04	70,265.51	3,402.49	133,426.04
650 Supplies & Fees – Technology Related	633.54	7,407.04		8,040.58
Total Supplies	\$76,808.68	\$128,556.88	\$10,643.14	\$216,008.70
700 Property				
758 Capitalized Technology Software - Original		3,089.62		3,089.62
768 Capitalized Technology Software - Replacement		151.20		151.20
Total Property		\$3,240.82		\$3,240.82
800 Other Objects				

General Fund (10)

2200 Support Services – Instructional Staff

800 Other Objects

810 Dues and Fees

Total Other Objects

Total 2200 Support Services – Instructional Staff

	<u>Elementary</u>	<u>Secondary</u>	<u>Federal</u>	<u>Total</u>
810 Dues and Fees	2,407.91	3,033.59	20,473.66	25,915.16
Total Other Objects	\$2,407.91	\$3,033.59	\$20,473.66	\$25,915.16
Total 2200 Support Services – Instructional Staff	\$2,859,886.58	\$2,274,949.83	\$346,833.44	\$5,481,669.85

General Fund (10)

2210 Supervision of Educational Media Services

	<u>Elementary</u>	<u>Secondary</u>	<u>Federal</u>	<u>Total</u>
400 <u>Purchased Property Services</u>				
440 Rentals	979.47	938.05		1,917.52
Total Purchased Property Services	\$979.47	\$938.05		\$1,917.52
500 <u>Other Purchased Services</u>				
530 Communications	1,007.57	964.96		1,972.53
580 Travel	220.20	210.89		431.09
Total Other Purchased Services	\$1,227.77	\$1,175.85		\$2,403.62
600 <u>Supplies</u>				
610 General Supplies	160.90	154.10		315.00
630 Food	71.51	68.49		140.00
640 Books and Periodicals	71.49	68.46		139.95
Total Supplies	\$303.90	\$291.05		\$594.95
800 <u>Other Objects</u>				
810 Dues and Fees	206.36	197.64		404.00
Total Other Objects	\$206.36	\$197.64		\$404.00
Total 2210 Supervision of Educational Media Services	\$2,717.50	\$2,602.59		\$5,320.09

General Fund (10)

2219 Supervision of Educational Media Services – All Other Supervision

	<u>Elementary</u>	<u>Secondary</u>	<u>Federal</u>	<u>Total</u>
400 <u>Purchased Property Services</u>				
440 Rentals	979.47	938.05		1,917.52
Total Purchased Property Services	\$979.47	\$938.05		\$1,917.52
500 <u>Other Purchased Services</u>				
530 Communications	1,007.57	964.96		1,972.53
580 Travel	220.20	210.89		431.09
Total Other Purchased Services	\$1,227.77	\$1,175.85		\$2,403.62
600 <u>Supplies</u>				
610 General Supplies	160.90	154.10		315.00
630 Food	71.51	68.49		140.00
640 Books and Periodicals	71.49	68.46		139.95
Total Supplies	\$303.90	\$291.05		\$594.95
800 <u>Other Objects</u>				
810 Dues and Fees	206.36	197.64		404.00
Total Other Objects	\$206.36	\$197.64		\$404.00
Total 2219 Supervision of Educational Media Services – All Other Supervision	\$2,717.50	\$2,602.59		\$5,320.09

General Fund (10)

2220 Technology Support Services

100 Personnel Services – Salaries

	<u>Elementary</u>	<u>Secondary</u>	<u>Federal</u>	<u>Total</u>
100 Personnel Services – Salaries		60,597.96		60,597.96
Total Personnel Services – Salaries		\$60,597.96		\$60,597.96

200 Personnel Services – Employee Benefits

210 Group Insurance – Contracted Provider		125.35		125.35
220 Social Security Contributions		4,365.39		4,365.39
230 PSERS Retirement Contributions		18,198.98		18,198.98
250 Unemployment Compensation		22.72		22.72
260 Workers' Compensation		635.87		635.87
270 Group Insurance – Self-Insurance		12,962.67		12,962.67
299 All Other Employee Benefits		257.97		257.97
Total Personnel Services – Employee Benefits		\$36,568.95		\$36,568.95

600 Supplies

610 General Supplies	3,787.70	14,497.41		18,285.11
650 Supplies & Fees – Technology Related		1,239.11		1,239.11
Total Supplies	\$3,787.70	\$15,736.52		\$19,524.22

700 Property

758 Capitalized Technology Software - Original		3,089.62		3,089.62
768 Capitalized Technology Software - Replacement		151.20		151.20
Total Property		\$3,240.82		\$3,240.82

Total 2220 Technology Support Services

	\$3,787.70	\$116,144.25		\$119,931.95
--	-------------------	---------------------	--	---------------------

General Fund (10)

2250 School Library Services

	<u>Elementary</u>	<u>Secondary</u>	<u>Federal</u>	<u>Total</u>
100 Personnel Services – Salaries				
100 Personnel Services – Salaries	948,800.86	523,238.30		1,472,039.16
Total Personnel Services – Salaries	\$948,800.86	\$523,238.30		\$1,472,039.16
200 Personnel Services – Employee Benefits				
210 Group Insurance – Contracted Provider	2,580.46	1,317.56		3,898.02
220 Social Security Contributions	68,181.88	37,314.14		105,496.02
230 PSERS Retirement Contributions	284,944.74	157,160.73		442,105.47
250 Unemployment Compensation	355.49	195.96		551.45
260 Workers' Compensation	9,947.68	5,483.31		15,430.99
270 Group Insurance – Self-Insurance	235,067.05	142,370.97		377,438.02
299 All Other Employee Benefits	4,035.74	2,224.56		6,260.30
Total Personnel Services – Employee Benefits	\$605,113.04	\$346,067.23		\$951,180.27
300 Purchased Professional and Technical Services				
324 Professional Educational Services – Employee Training and Development Services	471.47	451.53		923.00
329 Professional Educational Services – Other	1,168.24	1,118.83		2,287.07
340 Technical Services		3,669.74		3,669.74
390 Other Purchased Professional and Technical Services		800.00		800.00
Total Purchased Professional and Technical Services	\$1,639.71	\$6,040.10		\$7,679.81
500 Other Purchased Services				
530 Communications	3.00	2.88		5.88
550 Printing and Binding	226.80	217.20		444.00
580 Travel	50.03	47.92		97.95
Total Other Purchased Services	\$279.83	\$268.00		\$547.83
600 Supplies				
610 General Supplies	5,874.38	29,388.07		35,262.45
640 Books and Periodicals	58,455.25	68,829.13		127,284.38
650 Supplies & Fees – Technology Related		5,561.19		5,561.19
Total Supplies	\$64,329.63	\$103,778.39		\$168,108.02
800 Other Objects				
810 Dues and Fees	56.19	279.81		336.00
Total Other Objects	\$56.19	\$279.81		\$336.00
Total 2250 School Library Services	\$1,620,219.26	\$979,671.83		\$2,599,891.09

General Fund (10)

	<u>Elementary</u>	<u>Secondary</u>	<u>Federal</u>	<u>Total</u>
2260 Instruction and Curriculum Development Services				
100 Personnel Services – Salaries				
100 Personnel Services – Salaries	595,369.63	570,193.40		1,165,563.03
Total Personnel Services – Salaries	\$595,369.63	\$570,193.40		\$1,165,563.03
200 Personnel Services – Employee Benefits				
210 Group Insurance – Contracted Provider	4,343.44	4,159.69		8,503.13
220 Social Security Contributions	41,079.28	39,342.20		80,421.48
230 PSERS Retirement Contributions	175,064.95	167,662.07		342,727.02
250 Unemployment Compensation	222.83	213.41		436.24
260 Workers' Compensation	6,235.51	5,971.83		12,207.34
270 Group Insurance – Self-Insurance	82,414.96	78,929.83		161,344.79
299 All Other Employee Benefits	2,529.72	2,422.74		4,952.46
Total Personnel Services – Employee Benefits	\$311,890.69	\$298,701.77		\$610,592.46
300 Purchased Professional and Technical Services				
329 Professional Educational Services – Other	8,478.94	463.19		8,942.13
Total Purchased Professional and Technical Services	\$8,478.94	\$463.19		\$8,942.13
400 Purchased Property Services				
430 Repairs and Maintenance Services	255.28	244.48		499.76
440 Rentals	989.25	947.43		1,936.68
Total Purchased Property Services	\$1,244.53	\$1,191.91		\$2,436.44
500 Other Purchased Services				
530 Communications	1,482.92	1,840.10		3,323.02
580 Travel	2,593.71	4,017.17		6,610.88
Total Other Purchased Services	\$4,076.63	\$5,857.27		\$9,933.90
600 Supplies				
610 General Supplies	4,754.82	5,083.23		9,838.05
630 Food	812.91	778.53		1,591.44
640 Books and Periodicals	966.10	1,113.93		2,080.03
Total Supplies	\$6,533.83	\$6,975.69		\$13,509.52
800 Other Objects				
810 Dues and Fees	1,673.38	2,104.12		3,777.50
Total Other Objects	\$1,673.38	\$2,104.12		\$3,777.50
Total 2260 Instruction and Curriculum Development Services	\$929,267.63	\$885,487.35		\$1,814,754.98

General Fund (10)

	<u>Elementary</u>	<u>Secondary</u>	<u>Federal</u>	<u>Total</u>
2270 Instructional Staff Professional Development Services				
100 Personnel Services – Salaries				
100 Personnel Services – Salaries	51,581.41	49,400.21	58,515.99	159,497.61
Total Personnel Services – Salaries	\$51,581.41	\$49,400.21	\$58,515.99	\$159,497.61
200 Personnel Services – Employee Benefits				
210 Group Insurance – Contracted Provider	473.46	453.44	42.90	969.80
220 Social Security Contributions	4,049.02	3,877.78	4,310.82	12,237.62
230 PSERS Retirement Contributions	14,567.83	13,951.81	17,744.86	46,264.50
240 Tuition Reimbursement	225,994.83	216,438.28		442,433.11
250 Unemployment Compensation	19.31	18.49		37.80
260 Workers' Compensation	540.33	517.48		1,057.81
270 Group Insurance – Self-Insurance	2,115.00	2,025.55		4,140.55
299 All Other Employee Benefits	219.21	209.94		429.15
Total Personnel Services – Employee Benefits	\$247,978.99	\$237,492.77	\$22,098.58	\$507,570.34
300 Purchased Professional and Technical Services				
323 Professional Educational Services – Other Educational Agencies	127.70	122.30		250.00
324 Professional Educational Services – Employee Training and Development Services			50,303.78	50,303.78
329 Professional Educational Services – Other			147,923.52	147,923.52
Total Purchased Professional and Technical Services	\$127.70	\$122.30	\$198,227.30	\$198,477.30
400 Purchased Property Services				
440 Rentals			800.00	800.00
Total Purchased Property Services			\$800.00	\$800.00
500 Other Purchased Services				
550 Printing and Binding	581.80	557.20	121.80	1,260.80
580 Travel	1,298.99	1,244.08	14,463.03	17,006.10
Total Other Purchased Services	\$1,880.79	\$1,801.28	\$14,584.83	\$18,266.90
600 Supplies				
610 General Supplies	541.97	519.06	1,178.63	2,239.66
630 Food	412.91	395.44	6,062.02	6,870.37
640 Books and Periodicals	265.20	253.99	3,402.49	3,921.68
650 Supplies & Fees – Technology Related	633.54	606.74		1,240.28
Total Supplies	\$1,853.62	\$1,775.23	\$10,643.14	\$14,271.99
800 Other Objects				
810 Dues and Fees	471.98	452.02	20,473.66	21,397.66
Total Other Objects	\$471.98	\$452.02	\$20,473.66	\$21,397.66
Total 2270 Instructional Staff Professional Development Services	\$303,894.49	\$291,043.81	\$325,343.50	\$920,281.80

LEA : 124159002 West Chester Area SD

Printed 12/29/2017 2:20:11 PM

General Fund (10)

2280 Nonpublic Support Services

Elementary

Secondary

Federal

Total

500 Other Purchased Services

592 Services Purchased From Another LEA Within the State

21,489.94

21,489.94

Total Other Purchased Services

\$21,489.94

\$21,489.94

Total 2280 Nonpublic Support Services

\$21,489.94

\$21,489.94

General Fund (10)

	<u>Elementary</u>	<u>Secondary</u>	<u>Federal</u>	<u>Total</u>
2300 Support Services – Administration				
100 Personnel Services – Salaries				
100 Personnel Services – Salaries	1,925,056.69	3,351,405.43	423.09	6,190,195.95
Total Personnel Services – Salaries	\$1,925,056.69	\$3,351,405.43	\$423.09	\$6,190,195.95
200 Personnel Services – Employee Benefits				
210 Group Insurance – Contracted Provider	16,609.54	23,521.13		26,521.08
220 Social Security Contributions	131,601.65	236,075.65		420,460.55
230 PSERS Retirement Contributions	572,390.27	968,847.85		1,806,076.23
250 Unemployment Compensation	718.63	1,253.41		2,308.34
260 Workers' Compensation	20,108.87	35,073.31		64,592.15
270 Group Insurance – Self-Insurance	340,239.92	499,599.06		964,168.78
299 All Other Employee Benefits	8,158.08	14,229.09		26,204.77
Total Personnel Services – Employee Benefits	\$1,089,826.96	\$1,778,599.50		\$3,310,331.90
300 Purchased Professional and Technical Services				
310 Official / Administrative Services				654,784.25
324 Professional Educational Services – Employee Training and Development Services		925.00		925.00
329 Professional Educational Services – Other				62,261.07
330 Other Professional Services		837.00	1,500.00	428,867.58
340 Technical Services				4,720.95
350 Security / Safety Services		1,182.78		1,182.78
390 Other Purchased Professional and Technical Services				11,808.00
Total Purchased Professional and Technical Services		\$2,944.78	\$1,500.00	\$1,164,549.63
400 Purchased Property Services				
430 Repairs and Maintenance Services		160.99		1,115.53
440 Rentals		1,856.49		4,922.49
Total Purchased Property Services		\$2,017.48		\$6,038.02
500 Other Purchased Services				
520 Insurance – General				108,042.21
530 Communications	5,369.86	18,799.09		40,663.85
549 Other Advertising/Public Relations				7,120.18
550 Printing and Binding		12,111.11		29,052.00
580 Travel	45.66	3,866.53		10,390.67
Total Other Purchased Services	\$5,415.52	\$34,776.73		\$195,268.91
600 Supplies				
610 General Supplies	5,346.15	64,688.95		93,834.10
630 Food	1,796.55	12,657.27		24,726.85
640 Books and Periodicals	545.32	3,826.12		7,119.44
650 Supplies & Fees – Technology Related		2,094.00		2,094.00
Total Supplies	\$7,688.02	\$83,266.34		\$127,774.39
700 Property				
762 Capitalized Equipment - Replacement		3,899.00		3,899.00
Total Property		\$3,899.00		\$3,899.00
800 Other Objects				

General Fund (10)

2300 Support Services – Administration

800 Other Objects

810 Dues and Fees

Total Other Objects

Total 2300 Support Services – Administration

Elementary

Secondary

Federal

Total

4,236.00

5,524.00

42,212.67

\$4,236.00

\$5,524.00

\$42,212.67

\$3,032,223.19

\$5,262,433.26

\$1,923.09

\$11,040,270.47

General Fund (10)

	<u>Elementary</u>	<u>Secondary</u>	<u>Federal</u>	<u>Total</u>
2310 Board Services				
100 Personnel Services – Salaries				
100 Personnel Services – Salaries				4,943.54
Total Personnel Services – Salaries				\$4,943.54
200 Personnel Services – Employee Benefits				
220 Social Security Contributions				373.23
230 PSERS Retirement Contributions				1,492.02
Total Personnel Services – Employee Benefits				\$1,865.25
300 Purchased Professional and Technical Services				
329 Professional Educational Services – Other				3,440.35
330 Other Professional Services				40,787.50
Total Purchased Professional and Technical Services				\$44,227.85
500 Other Purchased Services				
520 Insurance – General				83,539.50
530 Communications				9.96
549 Other Advertising/Public Relations				2,407.19
Total Other Purchased Services				\$85,956.65
600 Supplies				
610 General Supplies				6,853.83
630 Food				4,318.00
Total Supplies				\$11,171.83
800 Other Objects				
810 Dues and Fees				15,025.00
Total Other Objects				\$15,025.00
Total 2310 Board Services				\$163,190.12

General Fund (10)

2330 Tax Assessment and Collection Services

Elementary

Secondary

Federal

Total

200 Personnel Services – Employee Benefits

220 Social Security Contributions

57.48

Total Personnel Services – Employee Benefits

\$57.48

300 Purchased Professional and Technical Services

310 Official / Administrative Services

654,784.25

329 Professional Educational Services – Other

58,820.72

390 Other Purchased Professional and Technical Services

11,808.00

Total Purchased Professional and Technical Services

\$725,412.97

500 Other Purchased Services

520 Insurance – General

24,502.71

530 Communications

15,367.24

580 Travel

248.40

Total Other Purchased Services

\$40,118.35

800 Other Objects

810 Dues and Fees

7,962.52

Total Other Objects

\$7,962.52

Total 2330 Tax Assessment and Collection Services

\$773,551.32

General Fund (10)

2350 Legal and Accounting Services

Elementary

Secondary

Federal

Total

300 Purchased Professional and Technical Services

330 Other Professional Services

1,500.00

387,243.08

Total Purchased Professional and Technical Services

\$1,500.00

\$387,243.08

Total 2350 Legal and Accounting Services

\$1,500.00

\$387,243.08

General Fund (10)

2360 Office of the Superintendent / Executive Director Services

Elementary

Secondary

Federal

Total

100 Personnel Services – Salaries

100 Personnel Services – Salaries

779,774.24

Total Personnel Services – Salaries

\$779,774.24

200 Personnel Services – Employee Benefits

210 Group Insurance – Contracted Provider

(13,751.26)

220 Social Security Contributions

42,925.11

230 PSERS Retirement Contributions

224,685.97

250 Unemployment Compensation

291.67

260 Workers' Compensation

8,161.13

270 Group Insurance – Self-Insurance

107,190.90

299 All Other Employee Benefits

3,310.95

Total Personnel Services – Employee Benefits

\$372,814.47

400 Purchased Property Services

430 Repairs and Maintenance Services

954.54

440 Rentals

3,066.00

Total Purchased Property Services

\$4,020.54

500 Other Purchased Services

530 Communications

1,590.76

1,523.51

3,114.27

580 Travel

4,589.24

Total Other Purchased Services

\$1,590.76

\$1,523.51

\$7,703.51

600 Supplies

610 General Supplies

4,509.47

630 Food

5,955.03

640 Books and Periodicals

1,505.20

Total Supplies

\$11,969.70

800 Other Objects

810 Dues and Fees

7,181.65

Total Other Objects

\$7,181.65

Total 2360 Office of the Superintendent / Executive Director Services

\$1,590.76

\$1,523.51

\$1,183,464.11

General Fund (10)

2370 Community Relations Services

Elementary

Secondary

Federal

Total

100 Personnel Services – Salaries

100 Personnel Services – Salaries 128,592.96

Total Personnel Services – Salaries \$128,592.96

200 Personnel Services – Employee Benefits

210 Group Insurance – Contracted Provider 141.67

220 Social Security Contributions 9,427.43

230 PSERS Retirement Contributions 38,660.12

250 Unemployment Compensation 44.63

260 Workers' Compensation 1,248.84

270 Group Insurance – Self-Insurance 17,138.90

299 All Other Employee Benefits 506.65

Total Personnel Services – Employee Benefits \$67,168.24

300 Purchased Professional and Technical Services

340 Technical Services 4,720.95

Total Purchased Professional and Technical Services \$4,720.95

500 Other Purchased Services

530 Communications 1,117.70

549 Other Advertising/Public Relations 4,712.99

550 Printing and Binding 16,940.89

580 Travel 1,640.84

Total Other Purchased Services \$24,412.42

600 Supplies

610 General Supplies 12,435.70

640 Books and Periodicals 1,242.80

Total Supplies \$13,678.50

800 Other Objects

810 Dues and Fees 2,283.50

Total Other Objects \$2,283.50

Total 2370 Community Relations Services \$240,856.57

General Fund (10)

2380 Office of the Principal Services

	<u>Elementary</u>	<u>Secondary</u>	<u>Federal</u>	<u>Total</u>
100 Personnel Services – Salaries				
100 Personnel Services – Salaries	1,925,056.69	3,351,405.43	423.09	5,276,885.21
Total Personnel Services – Salaries	\$1,925,056.69	\$3,351,405.43	\$423.09	\$5,276,885.21
200 Personnel Services – Employee Benefits				
210 Group Insurance – Contracted Provider	16,609.54	23,521.13		40,130.67
220 Social Security Contributions	131,601.65	236,075.65		367,677.30
230 PSERS Retirement Contributions	572,390.27	968,847.85		1,541,238.12
250 Unemployment Compensation	718.63	1,253.41		1,972.04
260 Workers' Compensation	20,108.87	35,073.31		55,182.18
270 Group Insurance – Self-Insurance	340,239.92	499,599.06		839,838.98
299 All Other Employee Benefits	8,158.08	14,229.09		22,387.17
Total Personnel Services – Employee Benefits	\$1,089,826.96	\$1,778,599.50		\$2,868,426.46
300 Purchased Professional and Technical Services				
324 Professional Educational Services – Employee Training and Development Services		925.00		925.00
330 Other Professional Services		837.00		837.00
350 Security / Safety Services		1,182.78		1,182.78
Total Purchased Professional and Technical Services		\$2,944.78		\$2,944.78
400 Purchased Property Services				
430 Repairs and Maintenance Services		160.99		160.99
440 Rentals		1,856.49		1,856.49
Total Purchased Property Services		\$2,017.48		\$2,017.48
500 Other Purchased Services				
530 Communications	3,779.10	17,275.58		21,054.68
550 Printing and Binding		12,111.11		12,111.11
580 Travel	45.66	3,866.53		3,912.19
Total Other Purchased Services	\$3,824.76	\$33,253.22		\$37,077.98
600 Supplies				
610 General Supplies	5,346.15	64,688.95		70,035.10
630 Food	1,796.55	12,657.27		14,453.82
640 Books and Periodicals	545.32	3,826.12		4,371.44
650 Supplies & Fees – Technology Related		2,094.00		2,094.00
Total Supplies	\$7,688.02	\$83,266.34		\$90,954.36
700 Property				
762 Capitalized Equipment - Replacement		3,899.00		3,899.00
Total Property		\$3,899.00		\$3,899.00
800 Other Objects				
810 Dues and Fees	4,236.00	5,524.00		9,760.00
Total Other Objects	\$4,236.00	\$5,524.00		\$9,760.00
Total 2380 Office of the Principal Services	\$3,030,632.43	\$5,260,909.75	\$423.09	\$8,291,965.27

General Fund (10)

	<u>Elementary</u>	<u>Secondary</u>	<u>Federal</u>	<u>Total</u>
2400 Support Services – Pupil Health				
100 Personnel Services – Salaries				
100 Personnel Services – Salaries				1,290,193.89
Total Personnel Services – Salaries				\$1,290,193.89
200 Personnel Services – Employee Benefits				
210 Group Insurance – Contracted Provider				3,468.25
220 Social Security Contributions				90,959.31
230 PSERS Retirement Contributions				385,216.11
250 Unemployment Compensation				481.04
260 Workers' Compensation				13,460.09
270 Group Insurance – Self-Insurance				422,717.51
299 All Other Employee Benefits				5,460.69
Total Personnel Services – Employee Benefits				\$921,763.00
300 Purchased Professional and Technical Services				
329 Professional Educational Services – Other				4,994.72
330 Other Professional Services			350.00	3,245.00
390 Other Purchased Professional and Technical Services				340.00
Total Purchased Professional and Technical Services			\$350.00	\$8,579.72
400 Purchased Property Services				
430 Repairs and Maintenance Services				2,639.52
Total Purchased Property Services				\$2,639.52
500 Other Purchased Services				
530 Communications				419.98
580 Travel				483.05
Total Other Purchased Services				\$903.03
600 Supplies				
610 General Supplies			1,321.03	31,677.36
630 Food				261.10
640 Books and Periodicals				41.75
Total Supplies			\$1,321.03	\$31,980.21
800 Other Objects				
810 Dues and Fees			568.00	813.00
Total Other Objects			\$568.00	\$813.00
Total 2400 Support Services – Pupil Health			\$2,239.03	\$2,256,872.37

General Fund (10)

2420 Medical Services

Elementary

Secondary

Federal

Total

300 Purchased Professional and Technical Services

330 Other Professional Services

2,895.00

Total Purchased Professional and Technical Services

\$2,895.00

Total 2420 Medical Services

\$2,895.00

General Fund (10)

2440 Nursing Services

	<u>Elementary</u>	<u>Secondary</u>	<u>Federal</u>	<u>Total</u>
100 Personnel Services – Salaries				
100 Personnel Services – Salaries				1,121,500.03
Total Personnel Services – Salaries				\$1,121,500.03
200 Personnel Services – Employee Benefits				
210 Group Insurance – Contracted Provider				3,049.39
220 Social Security Contributions				79,351.15
230 PSERS Retirement Contributions				336,807.68
250 Unemployment Compensation				417.78
260 Workers' Compensation				11,689.94
270 Group Insurance – Self-Insurance				351,087.23
299 All Other Employee Benefits				4,742.55
Total Personnel Services – Employee Benefits				\$787,145.72
300 Purchased Professional and Technical Services				
329 Professional Educational Services – Other				4,994.72
330 Other Professional Services			350.00	350.00
390 Other Purchased Professional and Technical Services				340.00
Total Purchased Professional and Technical Services			\$350.00	\$5,684.72
400 Purchased Property Services				
430 Repairs and Maintenance Services				2,639.52
Total Purchased Property Services				\$2,639.52
500 Other Purchased Services				
530 Communications				419.98
580 Travel				483.05
Total Other Purchased Services				\$903.03
600 Supplies				
610 General Supplies			1,321.03	31,677.36
630 Food				261.10
640 Books and Periodicals				41.75
Total Supplies			\$1,321.03	\$31,980.21
800 Other Objects				
810 Dues and Fees			568.00	813.00
Total Other Objects			\$568.00	\$813.00
Total 2440 Nursing Services			\$2,239.03	\$1,950,666.23

General Fund (10)

2450 Nonpublic Health Services

Elementary

Secondary

Federal

Total

100 Personnel Services – Salaries

100 Personnel Services – Salaries

168,693.86

Total Personnel Services – Salaries

\$168,693.86

200 Personnel Services – Employee Benefits

210 Group Insurance – Contracted Provider

418.86

220 Social Security Contributions

11,608.16

230 PSERS Retirement Contributions

48,408.43

250 Unemployment Compensation

63.26

260 Workers' Compensation

1,770.15

270 Group Insurance – Self-Insurance

71,630.28

299 All Other Employee Benefits

718.14

Total Personnel Services – Employee Benefits

\$134,617.28

Total 2450 Nonpublic Health Services

\$303,311.14

General Fund (10)

	<u>Elementary</u>	<u>Secondary</u>	<u>Federal</u>	<u>Total</u>
2500 Support Services – Business				
100 Personnel Services – Salaries				
100 Personnel Services – Salaries				1,089,058.49
Total Personnel Services – Salaries				\$1,089,058.49
200 Personnel Services – Employee Benefits				
210 Group Insurance – Contracted Provider				3,598.59
220 Social Security Contributions				72,262.39
230 PSERS Retirement Contributions				312,718.45
250 Unemployment Compensation				408.17
260 Workers' Compensation				11,421.32
270 Group Insurance – Self-Insurance				245,488.35
299 All Other Employee Benefits				4,633.58
Total Personnel Services – Employee Benefits				\$650,530.85
300 Purchased Professional and Technical Services				
324 Professional Educational Services – Employee Training and Development Services				2,773.10
329 Professional Educational Services – Other				531.04
Total Purchased Professional and Technical Services				\$3,304.14
400 Purchased Property Services				
430 Repairs and Maintenance Services				839.18
440 Rentals				2,536.24
Total Purchased Property Services				\$3,375.42
500 Other Purchased Services				
530 Communications				16,365.20
580 Travel				1,412.66
Total Other Purchased Services				\$17,777.86
600 Supplies				
610 General Supplies				9,122.00
630 Food				358.00
640 Books and Periodicals				818.40
Total Supplies				\$10,298.40
800 Other Objects				
810 Dues and Fees				16,262.33
Total Other Objects				\$16,262.33
Total 2500 Support Services – Business				\$1,790,607.49

General Fund (10)

2510 Fiscal Services

Elementary Secondary Federal Total

100 Personnel Services – Salaries
100 Personnel Services – Salaries 937,139.12

Total Personnel Services – Salaries \$937,139.12

200 Personnel Services – Employee Benefits
210 Group Insurance – Contracted Provider 2,997.57
220 Social Security Contributions 61,431.96
230 PSERS Retirement Contributions 274,313.40
250 Unemployment Compensation 351.22
260 Workers' Compensation 9,827.91
270 Group Insurance – Self-Insurance 211,484.68
299 All Other Employee Benefits 3,987.14

Total Personnel Services – Employee Benefits \$564,393.88

300 Purchased Professional and Technical Services
324 Professional Educational Services – Employee Training and Development Services 2,773.10
329 Professional Educational Services – Other 531.04

Total Purchased Professional and Technical Services \$3,304.14

400 Purchased Property Services
430 Repairs and Maintenance Services 839.18
440 Rentals 2,536.24

Total Purchased Property Services \$3,375.42

500 Other Purchased Services
530 Communications 14,885.20
580 Travel 1,412.66

Total Other Purchased Services \$16,297.86

600 Supplies
610 General Supplies 9,122.00
630 Food 358.00
640 Books and Periodicals 818.40

Total Supplies \$10,298.40

800 Other Objects
810 Dues and Fees 16,212.33

Total Other Objects \$16,212.33

Total 2510 Fiscal Services \$1,551,021.15

General Fund (10)

2511 Supervision of Fiscal Services - Head of Component

Elementary

Secondary

Federal

Total

100 Personnel Services – Salaries

100 Personnel Services – Salaries

289,632.18

Total Personnel Services – Salaries

\$289,632.18

200 Personnel Services – Employee Benefits

210 Group Insurance – Contracted Provider

1,518.97

220 Social Security Contributions

16,111.37

230 PSERS Retirement Contributions

79,984.84

250 Unemployment Compensation

108.61

260 Workers' Compensation

3,039.18

270 Group Insurance – Self-Insurance

36,560.92

299 All Other Employee Benefits

1,232.98

Total Personnel Services – Employee Benefits

\$138,556.87

300 Purchased Professional and Technical Services

324 Professional Educational Services – Employee Training and Development Services

414.00

Total Purchased Professional and Technical Services

\$414.00

500 Other Purchased Services

530 Communications

419.90

580 Travel

1,086.17

Total Other Purchased Services

\$1,506.07

800 Other Objects

810 Dues and Fees

300.00

Total Other Objects

\$300.00

Total 2511 Supervision of Fiscal Services - Head of Component

\$430,409.12

General Fund (10)

2513 Receiving and Disbursing Funds Services

Elementary

Secondary

Federal

Total

100 Personnel Services – Salaries

100 Personnel Services – Salaries

142,187.30

Total Personnel Services – Salaries

\$142,187.30

200 Personnel Services – Employee Benefits

210 Group Insurance – Contracted Provider

209.21

220 Social Security Contributions

9,726.06

230 PSERS Retirement Contributions

42,863.35

250 Unemployment Compensation

53.18

260 Workers' Compensation

1,488.11

270 Group Insurance – Self-Insurance

49,326.57

299 All Other Employee Benefits

603.72

Total Personnel Services – Employee Benefits

\$104,270.20

Total 2513 Receiving and Disbursing Funds Services

\$246,457.50

General Fund (10)

2514 Payroll Services

	<u>Elementary</u>	<u>Secondary</u>	<u>Federal</u>	<u>Total</u>
100 Personnel Services – Salaries				
100 Personnel Services – Salaries				103,079.56
Total Personnel Services – Salaries				\$103,079.56
200 Personnel Services – Employee Benefits				
210 Group Insurance – Contracted Provider				233.35
220 Social Security Contributions				7,123.83
230 PSERS Retirement Contributions				30,612.86
250 Unemployment Compensation				38.64
260 Workers' Compensation				1,081.12
270 Group Insurance – Self-Insurance				34,752.19
299 All Other Employee Benefits				438.61
Total Personnel Services – Employee Benefits				\$74,280.60
300 Purchased Professional and Technical Services				
324 Professional Educational Services – Employee Training and Development Services				298.00
Total Purchased Professional and Technical Services				\$298.00
Total 2514 Payroll Services				\$177,658.16

General Fund (10)

2515 Financial Accounting Services

Elementary Secondary Federal Total

100 Personnel Services – Salaries

100 Personnel Services – Salaries 351,383.29

Total Personnel Services – Salaries \$351,383.29

200 Personnel Services – Employee Benefits

210 Group Insurance – Contracted Provider 953.14

220 Social Security Contributions 24,953.42

230 PSERS Retirement Contributions 105,526.57

250 Unemployment Compensation 131.77

260 Workers' Compensation 3,687.15

270 Group Insurance – Self-Insurance 73,121.86

299 All Other Employee Benefits 1,495.86

Total Personnel Services – Employee Benefits \$209,869.77

300 Purchased Professional and Technical Services

324 Professional Educational Services – Employee Training and Development Services 2,061.10

Total Purchased Professional and Technical Services \$2,061.10

400 Purchased Property Services

430 Repairs and Maintenance Services 839.18

440 Rentals 2,536.24

Total Purchased Property Services \$3,375.42

500 Other Purchased Services

530 Communications 14,465.30

580 Travel 326.49

Total Other Purchased Services \$14,791.79

600 Supplies

610 General Supplies 9,122.00

630 Food 358.00

640 Books and Periodicals 818.40

Total Supplies \$10,298.40

800 Other Objects

810 Dues and Fees 15,912.33

Total Other Objects \$15,912.33

Total 2515 Financial Accounting Services \$607,692.10

General Fund (10)

2519 Other Fiscal Services

Elementary

Secondary

Federal

Total

100 Personnel Services – Salaries

100 Personnel Services – Salaries

50,856.79

Total Personnel Services – Salaries

\$50,856.79

200 Personnel Services – Employee Benefits

210 Group Insurance – Contracted Provider

82.90

220 Social Security Contributions

3,517.28

230 PSERS Retirement Contributions

15,325.78

250 Unemployment Compensation

19.02

260 Workers' Compensation

532.35

270 Group Insurance – Self-Insurance

17,723.14

299 All Other Employee Benefits

215.97

Total Personnel Services – Employee Benefits

\$37,416.44

300 Purchased Professional and Technical Services

329 Professional Educational Services – Other

531.04

Total Purchased Professional and Technical Services

\$531.04

Total 2519 Other Fiscal Services

\$88,804.27

General Fund (10)

2520 Purchasing Services

Elementary

Secondary

Federal

Total

100 Personnel Services – Salaries

100 Personnel Services – Salaries

98,850.55

Total Personnel Services – Salaries

\$98,850.55

200 Personnel Services – Employee Benefits

210 Group Insurance – Contracted Provider

469.18

220 Social Security Contributions

7,158.52

230 PSERS Retirement Contributions

22,412.73

250 Unemployment Compensation

37.07

260 Workers' Compensation

1,037.26

270 Group Insurance – Self-Insurance

16,484.30

299 All Other Employee Benefits

420.81

Total Personnel Services – Employee Benefits

\$48,019.87

Total 2520 Purchasing Services

\$146,870.42

General Fund (10)

2530 Warehousing and Distributing Services

Elementary

Secondary

Federal

Total

100 Personnel Services – Salaries

100 Personnel Services – Salaries

53,068.82

Total Personnel Services – Salaries

\$53,068.82

200 Personnel Services – Employee Benefits

210 Group Insurance – Contracted Provider

131.84

220 Social Security Contributions

3,671.91

230 PSERS Retirement Contributions

15,992.32

250 Unemployment Compensation

19.88

260 Workers' Compensation

556.15

270 Group Insurance – Self-Insurance

17,519.37

299 All Other Employee Benefits

225.63

Total Personnel Services – Employee Benefits

\$38,117.10

500 Other Purchased Services

530 Communications

1,480.00

Total Other Purchased Services

\$1,480.00

800 Other Objects

810 Dues and Fees

50.00

Total Other Objects

\$50.00

Total 2530 Warehousing and Distributing Services

\$92,715.92

General Fund (10)

2600 Operation and Maintenance of Plant Services

Elementary

Secondary

Federal

Total

100 Personnel Services – Salaries

100 Personnel Services – Salaries 6,785,690.10

Total Personnel Services – Salaries \$6,785,690.10

200 Personnel Services – Employee Benefits

210 Group Insurance – Contracted Provider 13,140.35

220 Social Security Contributions 501,790.27

230 PSERS Retirement Contributions 1,979,009.41

250 Unemployment Compensation 2,410.60

260 Workers' Compensation 67,453.43

270 Group Insurance – Self-Insurance 1,346,172.81

299 All Other Employee Benefits 27,365.56

Total Personnel Services – Employee Benefits \$3,937,342.43

300 Purchased Professional and Technical Services

350 Security / Safety Services 7,271.00

390 Other Purchased Professional and Technical Services 32,264.17

Total Purchased Professional and Technical Services \$39,535.17

400 Purchased Property Services

420 Utility Services 2,321,698.20

430 Repairs and Maintenance Services 714,055.78

440 Rentals 4,815.41

Total Purchased Property Services \$3,040,569.39

500 Other Purchased Services

521 Fire Insurance 164,320.00

522 Automotive Liability Insurance 47,650.00

523 General Property and Liability Insurance 133,314.00

529 Other Insurance 9,900.00

530 Communications 256,510.59

580 Travel 9,961.18

Total Other Purchased Services \$621,655.77

600 Supplies

610 General Supplies 380,653.22 364,556.67 745,209.89

620 Energy 605,323.63

630 Food 168.23

Total Supplies \$380,653.22 \$364,556.67 \$1,350,701.75

700 Property

752 Capital Equipment – Original and Additional 106,025.77

762 Capitalized Equipment - Replacement 107,338.34

Total Property \$213,364.11

800 Other Objects

810 Dues and Fees 7,759.00

Total Other Objects \$7,759.00

Total 2600 Operation and Maintenance of Plant Services

\$380,653.22

\$364,556.67

\$15,996,617.72

General Fund (10)

2610 Supervision of Operation and Maintenance of Plant Services

Elementary

Secondary

Federal

Total

100 Personnel Services – Salaries

100 Personnel Services – Salaries

1,709,070.90

Total Personnel Services – Salaries

\$1,709,070.90

200 Personnel Services – Employee Benefits

210 Group Insurance – Contracted Provider

4,067.61

220 Social Security Contributions

121,330.99

230 PSERS Retirement Contributions

471,280.56

250 Unemployment Compensation

639.86

260 Workers' Compensation

17,904.84

270 Group Insurance – Self-Insurance

320,692.71

299 All Other Employee Benefits

7,263.92

Total Personnel Services – Employee Benefits

\$943,180.49

500 Other Purchased Services

530 Communications

20,220.51

580 Travel

8,225.04

Total Other Purchased Services

\$28,445.55

800 Other Objects

810 Dues and Fees

1,402.00

Total Other Objects

\$1,402.00

Total 2610 Supervision of Operation and Maintenance of Plant Services

\$2,682,098.94

General Fund (10)

2611 Supervision of Operation and Maintenance of Plant Services – Head of Component

Elementary

Secondary

Federal

Total

100 Personnel Services – Salaries

100 Personnel Services – Salaries

217,953.13

Total Personnel Services – Salaries

\$217,953.13

200 Personnel Services – Employee Benefits

210 Group Insurance – Contracted Provider

1,369.85

220 Social Security Contributions

13,437.82

230 PSERS Retirement Contributions

63,681.14

250 Unemployment Compensation

80.70

260 Workers' Compensation

2,258.17

270 Group Insurance – Self-Insurance

15,166.37

299 All Other Employee Benefits

916.13

Total Personnel Services – Employee Benefits

\$96,910.18

500 Other Purchased Services

580 Travel

4,881.03

Total Other Purchased Services

\$4,881.03

Total 2611 Supervision of Operation and Maintenance of Plant Services – Head of Component

\$319,744.34

General Fund (10)

2619 Supervision of Operation and Maintenance of Plant Services – All Other Supervision

Elementary

Secondary

Federal

Total

100 Personnel Services – Salaries

100 Personnel Services – Salaries

1,491,117.77

Total Personnel Services – Salaries

\$1,491,117.77

200 Personnel Services – Employee Benefits

210 Group Insurance – Contracted Provider

2,697.76

220 Social Security Contributions

107,893.17

230 PSERS Retirement Contributions

407,599.42

250 Unemployment Compensation

559.16

260 Workers' Compensation

15,646.67

270 Group Insurance – Self-Insurance

305,526.34

299 All Other Employee Benefits

6,347.79

Total Personnel Services – Employee Benefits

\$846,270.31

500 Other Purchased Services

530 Communications

20,220.51

580 Travel

3,344.01

Total Other Purchased Services

\$23,564.52

800 Other Objects

810 Dues and Fees

1,402.00

Total Other Objects

\$1,402.00

Total 2619 Supervision of Operation and Maintenance of Plant Services – All Other Supervision

\$2,362,354.60

General Fund (10)

2620 Operation of Buildings Services

100 Personnel Services – Salaries

	<u>Elementary</u>	<u>Secondary</u>	<u>Federal</u>	<u>Total</u>
100 Personnel Services – Salaries				4,335,430.48

Total Personnel Services – Salaries				\$4,335,430.48
--	--	--	--	-----------------------

200 Personnel Services – Employee Benefits

210 Group Insurance – Contracted Provider				7,388.96
220 Social Security Contributions				325,736.44
230 PSERS Retirement Contributions				1,284,107.16
250 Unemployment Compensation				1,504.97
260 Workers' Compensation				42,111.79
270 Group Insurance – Self-Insurance				887,339.49
299 All Other Employee Benefits				17,084.56

Total Personnel Services – Employee Benefits				\$2,565,273.37
---	--	--	--	-----------------------

300 Purchased Professional and Technical Services

390 Other Purchased Professional and Technical Services				32,264.17
---	--	--	--	-----------

Total Purchased Professional and Technical Services				\$32,264.17
--	--	--	--	--------------------

400 Purchased Property Services

420 Utility Services				2,321,698.20
430 Repairs and Maintenance Services				614,871.38
440 Rentals				632.92

Total Purchased Property Services				\$2,937,202.50
--	--	--	--	-----------------------

500 Other Purchased Services

521 Fire Insurance				164,320.00
522 Automotive Liability Insurance				47,650.00
523 General Property and Liability Insurance				133,314.00
529 Other Insurance				9,900.00
530 Communications				236,290.08
580 Travel				1,736.14

Total Other Purchased Services				\$593,210.22
---------------------------------------	--	--	--	---------------------

600 Supplies

610 General Supplies	309,518.52	296,430.01		605,948.53
620 Energy				547,949.31
630 Food				168.23

Total Supplies	\$309,518.52	\$296,430.01		\$1,154,066.07
-----------------------	---------------------	---------------------	--	-----------------------

700 Property

752 Capital Equipment – Original and Additional				95,070.77
762 Capitalized Equipment - Replacement				79,033.64

Total Property				\$174,104.41
-----------------------	--	--	--	---------------------

800 Other Objects

810 Dues and Fees				6,292.00
-------------------	--	--	--	----------

Total Other Objects				\$6,292.00
----------------------------	--	--	--	-------------------

Total 2620 Operation of Buildings Services	\$309,518.52	\$296,430.01		\$11,797,843.22
---	---------------------	---------------------	--	------------------------

General Fund (10)

2630 Care and Upkeep of Grounds Services	<u>Elementary</u>	<u>Secondary</u>	<u>Federal</u>	<u>Total</u>
100 Personnel Services – Salaries				
100 Personnel Services – Salaries				592,840.33
Total Personnel Services – Salaries				\$592,840.33
200 Personnel Services – Employee Benefits				
210 Group Insurance – Contracted Provider				1,221.10
220 Social Security Contributions				44,096.40
230 PSERS Retirement Contributions				178,935.90
250 Unemployment Compensation				210.91
260 Workers' Compensation				5,901.76
270 Group Insurance – Self-Insurance				107,188.62
299 All Other Employee Benefits				2,394.32
Total Personnel Services – Employee Benefits				\$339,949.01
400 Purchased Property Services				
430 Repairs and Maintenance Services				88,819.30
440 Rentals				4,182.49
Total Purchased Property Services				\$93,001.79
600 Supplies				
610 General Supplies	42,372.52	40,580.73		82,953.25
Total Supplies	\$42,372.52	\$40,580.73		\$82,953.25
700 Property				
752 Capital Equipment – Original and Additional				10,955.00
762 Capitalized Equipment - Replacement				28,304.70
Total Property				\$39,259.70
800 Other Objects				
810 Dues and Fees				65.00
Total Other Objects				\$65.00
Total 2630 Care and Upkeep of Grounds Services	\$42,372.52	\$40,580.73		\$1,148,069.08

General Fund (10)

	<u>Elementary</u>	<u>Secondary</u>	<u>Federal</u>	<u>Total</u>
2650 Vehicle Operation and Maintenance Services (Other Than Student Transportation Vehicles)				
100 Personnel Services – Salaries				
100 Personnel Services – Salaries				92,704.98
Total Personnel Services – Salaries				\$92,704.98
200 Personnel Services – Employee Benefits				
210 Group Insurance – Contracted Provider				355.19
220 Social Security Contributions				6,598.98
230 PSERS Retirement Contributions				27,913.48
250 Unemployment Compensation				34.01
260 Workers' Compensation				951.66
270 Group Insurance – Self-Insurance				23,234.99
299 All Other Employee Benefits				386.08
Total Personnel Services – Employee Benefits				\$59,474.39
400 Purchased Property Services				
430 Repairs and Maintenance Services				10,365.10
Total Purchased Property Services				\$10,365.10
600 Supplies				
610 General Supplies	28,762.18	27,545.93		56,308.11
620 Energy				57,374.32
Total Supplies	\$28,762.18	\$27,545.93		\$113,682.43
Total 2650 Vehicle Operation and Maintenance Services (Other Than Student Transportation Vehicles)	\$28,762.18	\$27,545.93		\$276,226.90

General Fund (10)

2660 Safety and Security Services

Elementary Secondary Federal Total

100 Personnel Services – Salaries

100 Personnel Services – Salaries 55,643.41

Total Personnel Services – Salaries \$55,643.41

200 Personnel Services – Employee Benefits

210 Group Insurance – Contracted Provider 107.49

220 Social Security Contributions 4,027.46

230 PSERS Retirement Contributions 16,772.31

250 Unemployment Compensation 20.85

260 Workers' Compensation 583.38

270 Group Insurance – Self-Insurance 7,717.00

299 All Other Employee Benefits 236.68

Total Personnel Services – Employee Benefits \$29,465.17

300 Purchased Professional and Technical Services

350 Security / Safety Services 7,271.00

Total Purchased Professional and Technical Services \$7,271.00

Total 2660 Safety and Security Services \$92,379.58

General Fund (10)

2700 Student Transportation Services

Elementary Secondary Federal Total

100	<u>Personnel Services – Salaries</u>			
	100 Personnel Services – Salaries			211,706.11
Total Personnel Services – Salaries				\$211,706.11
200	<u>Personnel Services – Employee Benefits</u>			
	210 Group Insurance – Contracted Provider			634.81
	220 Social Security Contributions			15,432.52
	230 PSERS Retirement Contributions			62,613.57
	250 Unemployment Compensation			79.30
	260 Workers' Compensation			2,219.03
	270 Group Insurance – Self-Insurance			39,350.88
	299 All Other Employee Benefits			900.26
Total Personnel Services – Employee Benefits				\$121,230.37
300	<u>Purchased Professional and Technical Services</u>			
	324 Professional Educational Services – Employee Training and Development Services			309.05
	330 Other Professional Services			21,173.98
Total Purchased Professional and Technical Services				\$21,483.03
400	<u>Purchased Property Services</u>			
	440 Rentals			1,389.30
Total Purchased Property Services				\$1,389.30
500	<u>Other Purchased Services</u>			
	513 Contracted Carriers		10,000.00	13,158,967.96
	516 Student Transportation Services From the IU			9,566.76
	530 Communications			6,603.27
	580 Travel			2,375.39
Total Other Purchased Services				\$10,000.00 \$13,177,513.38
600	<u>Supplies</u>			
	610 General Supplies			71,576.39
	640 Books and Periodicals			307.95
Total Supplies				\$71,884.34
800	<u>Other Objects</u>			
	810 Dues and Fees			1,520.27
Total Other Objects				\$1,520.27
Total 2700 Student Transportation Services			\$10,000.00	\$13,606,726.80

General Fund (10)

2710 Supervision of Student Transportation Services

Elementary Secondary Federal Total

100	<u>Personnel Services – Salaries</u>			
	100 Personnel Services – Salaries			100,981.44
Total Personnel Services – Salaries				\$100,981.44
200	<u>Personnel Services – Employee Benefits</u>			
	210 Group Insurance – Contracted Provider			312.69
	220 Social Security Contributions			7,361.27
	230 PSERS Retirement Contributions			29,850.46
	250 Unemployment Compensation			37.83
	260 Workers' Compensation			1,058.64
	270 Group Insurance – Self-Insurance			18,340.52
	299 All Other Employee Benefits			429.49
Total Personnel Services – Employee Benefits				\$57,390.90
300	<u>Purchased Professional and Technical Services</u>			
	324 Professional Educational Services – Employee Training and Development Services			309.05
	330 Other Professional Services			21,173.98
Total Purchased Professional and Technical Services				\$21,483.03
400	<u>Purchased Property Services</u>			
	440 Rentals			1,389.30
Total Purchased Property Services				\$1,389.30
500	<u>Other Purchased Services</u>			
	530 Communications			6,603.27
	580 Travel			2,375.39
Total Other Purchased Services				\$8,978.66
600	<u>Supplies</u>			
	610 General Supplies			38,391.39
	640 Books and Periodicals			307.95
Total Supplies				\$38,699.34
800	<u>Other Objects</u>			
	810 Dues and Fees			1,520.27
Total Other Objects				\$1,520.27
Total 2710 Supervision of Student Transportation Services				\$230,442.94

General Fund (10)

	<u>Elementary</u>	<u>Secondary</u>	<u>Federal</u>	<u>Total</u>
2719 Supervision of Student Transportation Services – All Other Supervision				
100 Personnel Services – Salaries				
100 Personnel Services – Salaries				100,981.44
Total Personnel Services – Salaries				\$100,981.44
200 Personnel Services – Employee Benefits				
210 Group Insurance – Contracted Provider				312.69
220 Social Security Contributions				7,361.27
230 PSERS Retirement Contributions				29,850.46
250 Unemployment Compensation				37.83
260 Workers' Compensation				1,058.64
270 Group Insurance – Self-Insurance				18,340.52
299 All Other Employee Benefits				429.49
Total Personnel Services – Employee Benefits				\$57,390.90
300 Purchased Professional and Technical Services				
324 Professional Educational Services – Employee Training and Development Services				309.05
330 Other Professional Services				21,173.98
Total Purchased Professional and Technical Services				\$21,483.03
400 Purchased Property Services				
440 Rentals				1,389.30
Total Purchased Property Services				\$1,389.30
500 Other Purchased Services				
530 Communications				6,603.27
580 Travel				2,375.39
Total Other Purchased Services				\$8,978.66
600 Supplies				
610 General Supplies				38,391.39
640 Books and Periodicals				307.95
Total Supplies				\$38,699.34
800 Other Objects				
810 Dues and Fees				1,520.27
Total Other Objects				\$1,520.27
Total 2719 Supervision of Student Transportation Services – All Other Supervision				\$230,442.94

LEA : 124159002 West Chester Area SD

Printed 12/29/2017 2:20:11 PM

General Fund (10)

2720 Vehicle Operation Services

Elementary

Secondary

Federal

Total

500 Other Purchased Services

513 Contracted Carriers

10,000.00

6,667,420.47

516 Student Transportation Services From the IU

9,566.76

Total Other Purchased Services

\$10,000.00

\$6,676,987.23

Total 2720 Vehicle Operation Services

\$10,000.00

\$6,676,987.23

General Fund (10)

2750 Nonpublic Transportation

Elementary

Secondary

Federal

Total

100 Personnel Services – Salaries

100 Personnel Services – Salaries

110,724.67

Total Personnel Services – Salaries

\$110,724.67

200 Personnel Services – Employee Benefits

210 Group Insurance – Contracted Provider

322.12

220 Social Security Contributions

8,071.25

230 PSERS Retirement Contributions

32,763.11

250 Unemployment Compensation

41.47

260 Workers' Compensation

1,160.39

270 Group Insurance – Self-Insurance

21,010.36

299 All Other Employee Benefits

470.77

Total Personnel Services – Employee Benefits

\$63,839.47

500 Other Purchased Services

513 Contracted Carriers

6,491,547.49

Total Other Purchased Services

\$6,491,547.49

600 Supplies

610 General Supplies

33,185.00

Total Supplies

\$33,185.00

Total 2750 Nonpublic Transportation

\$6,699,296.63

General Fund (10)

2800 Support Services – Central

	<u>Elementary</u>	<u>Secondary</u>	<u>Federal</u>	<u>Total</u>
100 Personnel Services – Salaries				
100 Personnel Services – Salaries			11,509.50	1,681,487.36
Total Personnel Services – Salaries			\$11,509.50	\$1,681,487.36
200 Personnel Services – Employee Benefits				
210 Group Insurance – Contracted Provider			20.56	6,920.24
220 Social Security Contributions			749.48	118,297.94
230 PSERS Retirement Contributions			3,458.02	491,655.48
250 Unemployment Compensation				615.09
260 Workers' Compensation				17,211.47
270 Group Insurance – Self-Insurance			538.83	280,680.26
299 All Other Employee Benefits				6,982.62
Total Personnel Services – Employee Benefits			\$4,766.89	\$922,363.10
300 Purchased Professional and Technical Services				
324 Professional Educational Services – Employee Training and Development Services				2,340.00
329 Professional Educational Services – Other				73,279.32
330 Other Professional Services				36,285.81
340 Technical Services				2,227.50
390 Other Purchased Professional and Technical Services				36,456.87
Total Purchased Professional and Technical Services				\$150,589.50
400 Purchased Property Services				
430 Repairs and Maintenance Services				406,359.25
440 Rentals				3,083.37
Total Purchased Property Services				\$409,442.62
500 Other Purchased Services				
530 Communications				14,337.34
549 Other Advertising/Public Relations				369.00
580 Travel				9,751.36
Total Other Purchased Services				\$24,457.70
600 Supplies				
610 General Supplies				20,425.05
630 Food			162.44	1,090.94
650 Supplies & Fees – Technology Related				98,195.43
Total Supplies			\$162.44	\$119,711.42
800 Other Objects				
810 Dues and Fees				46,138.97
Total Other Objects				\$46,138.97
Total 2800 Support Services – Central			\$16,438.83	\$3,354,190.67

General Fund (10)

2810 Planning, Research, Development and Evaluation Services

Elementary

Secondary

Federal

Total

500 Other Purchased Services

530 Communications

6,018.24

Total Other Purchased Services

\$6,018.24

Total 2810 Planning, Research, Development and Evaluation Services

\$6,018.24

General Fund (10)

2820 Information Services

Elementary Secondary Federal Total

100 Personnel Services – Salaries

100 Personnel Services – Salaries 877,789.46

Total Personnel Services – Salaries \$877,789.46

200 Personnel Services – Employee Benefits

210 Group Insurance – Contracted Provider 3,646.54

220 Social Security Contributions 61,964.64

230 PSERS Retirement Contributions 256,981.33

250 Unemployment Compensation 321.30

260 Workers' Compensation 8,990.44

270 Group Insurance – Self-Insurance 158,594.18

299 All Other Employee Benefits 3,647.38

Total Personnel Services – Employee Benefits \$494,145.81

300 Purchased Professional and Technical Services

324 Professional Educational Services – Employee Training and Development Services 640.00

390 Other Purchased Professional and Technical Services 36,456.87

Total Purchased Professional and Technical Services \$37,096.87

400 Purchased Property Services

430 Repairs and Maintenance Services 405,819.48

Total Purchased Property Services \$405,819.48

500 Other Purchased Services

530 Communications 5,476.07

580 Travel 5,397.01

Total Other Purchased Services \$10,873.08

600 Supplies

610 General Supplies 4,387.00

630 Food 180.00

650 Supplies & Fees – Technology Related 98,195.43

Total Supplies \$102,762.43

Total 2820 Information Services \$1,928,487.13

General Fund (10)

2821 Supervision of Information Services

Elementary

Secondary

Federal

Total

100 Personnel Services – Salaries

100 Personnel Services – Salaries

190,159.41

Total Personnel Services – Salaries

\$190,159.41

200 Personnel Services – Employee Benefits

210 Group Insurance – Contracted Provider

2,504.05

220 Social Security Contributions

12,371.23

230 PSERS Retirement Contributions

54,673.44

250 Unemployment Compensation

71.31

260 Workers' Compensation

1,995.27

270 Group Insurance – Self-Insurance

28,321.15

299 All Other Employee Benefits

809.47

Total Personnel Services – Employee Benefits

\$100,745.92

Total 2821 Supervision of Information Services

\$290,905.33

General Fund (10)

2829 Other Information Services

Elementary Secondary Federal Total

100 Personnel Services – Salaries

100 Personnel Services – Salaries 687,630.05

Total Personnel Services – Salaries \$687,630.05

200 Personnel Services – Employee Benefits

210 Group Insurance – Contracted Provider 1,142.49

220 Social Security Contributions 49,593.41

230 PSERS Retirement Contributions 202,307.89

250 Unemployment Compensation 249.99

260 Workers' Compensation 6,995.17

270 Group Insurance – Self-Insurance 130,273.03

299 All Other Employee Benefits 2,837.91

Total Personnel Services – Employee Benefits \$393,399.89

300 Purchased Professional and Technical Services

324 Professional Educational Services – Employee Training and Development Services 640.00

390 Other Purchased Professional and Technical Services 36,456.87

Total Purchased Professional and Technical Services \$37,096.87

400 Purchased Property Services

430 Repairs and Maintenance Services 405,819.48

Total Purchased Property Services \$405,819.48

500 Other Purchased Services

530 Communications 5,476.07

580 Travel 5,397.01

Total Other Purchased Services \$10,873.08

600 Supplies

610 General Supplies 4,387.00

630 Food 180.00

650 Supplies & Fees – Technology Related 98,195.43

Total Supplies \$102,762.43

Total 2829 Other Information Services \$1,637,581.80

General Fund (10)

2830 Staff Services

	<u>Elementary</u>	<u>Secondary</u>	<u>Federal</u>	<u>Total</u>
100 Personnel Services – Salaries				
100 Personnel Services – Salaries				503,187.62
Total Personnel Services – Salaries				\$503,187.62
200 Personnel Services – Employee Benefits				
210 Group Insurance – Contracted Provider				2,144.21
220 Social Security Contributions				34,734.40
230 PSERS Retirement Contributions				145,494.02
250 Unemployment Compensation				187.38
260 Workers' Compensation				5,243.49
270 Group Insurance – Self-Insurance				53,516.54
299 All Other Employee Benefits				2,127.27
Total Personnel Services – Employee Benefits				\$243,447.31
300 Purchased Professional and Technical Services				
324 Professional Educational Services – Employee Training and Development Services				1,700.00
329 Professional Educational Services – Other				73,279.32
330 Other Professional Services				36,285.81
Total Purchased Professional and Technical Services				\$111,265.13
400 Purchased Property Services				
430 Repairs and Maintenance Services				539.77
440 Rentals				466.98
Total Purchased Property Services				\$1,006.75
500 Other Purchased Services				
530 Communications				2,843.03
549 Other Advertising/Public Relations				369.00
580 Travel				4,354.35
Total Other Purchased Services				\$7,566.38
600 Supplies				
610 General Supplies				15,750.05
630 Food				748.50
Total Supplies				\$16,498.55
800 Other Objects				
810 Dues and Fees				46,138.97
Total Other Objects				\$46,138.97
Total 2830 Staff Services				\$929,110.71

General Fund (10)

2831 Supervision of Staff Services

Elementary

Secondary

Federal

Total

100 Personnel Services – Salaries

100 Personnel Services – Salaries

225,617.24

Total Personnel Services – Salaries

\$225,617.24

200 Personnel Services – Employee Benefits

210 Group Insurance – Contracted Provider

1,063.91

220 Social Security Contributions

13,771.63

230 PSERS Retirement Contributions

65,954.01

250 Unemployment Compensation

84.53

260 Workers' Compensation

2,365.31

270 Group Insurance – Self-Insurance

24,280.39

299 All Other Employee Benefits

959.60

Total Personnel Services – Employee Benefits

\$108,479.38

500 Other Purchased Services

530 Communications

1,290.25

580 Travel

1,219.32

Total Other Purchased Services

\$2,509.57

Total 2831 Supervision of Staff Services

\$336,606.19

General Fund (10)

2832 Recruitment and Placement Services

Elementary

Secondary

Federal

Total

100 Personnel Services – Salaries

100 Personnel Services – Salaries

112,236.92

Total Personnel Services – Salaries

\$112,236.92

200 Personnel Services – Employee Benefits

210 Group Insurance – Contracted Provider

826.79

220 Social Security Contributions

8,868.59

230 PSERS Retirement Contributions

33,706.63

250 Unemployment Compensation

42.09

260 Workers' Compensation

1,177.73

270 Group Insurance – Self-Insurance

1,277.46

299 All Other Employee Benefits

477.80

Total Personnel Services – Employee Benefits

\$46,377.09

300 Purchased Professional and Technical Services

330 Other Professional Services

4,545.20

Total Purchased Professional and Technical Services

\$4,545.20

600 Supplies

610 General Supplies

6,420.83

Total Supplies

\$6,420.83

800 Other Objects

810 Dues and Fees

10.00

Total Other Objects

\$10.00

Total 2832 Recruitment and Placement Services

\$169,590.04

General Fund (10)

2835 Health Services

100 Personnel Services – Salaries

100 Personnel Services – Salaries 60,679.24

Total Personnel Services – Salaries \$60,679.24

200 Personnel Services – Employee Benefits

210 Group Insurance – Contracted Provider 98.16

220 Social Security Contributions 4,280.22

230 PSERS Retirement Contributions 16,715.18

250 Unemployment Compensation 22.75

260 Workers' Compensation 636.72

270 Group Insurance – Self-Insurance 14,557.40

299 All Other Employee Benefits 258.32

Total Personnel Services – Employee Benefits \$36,568.75

Total 2835 Health Services \$97,247.99

Elementary

Secondary

Federal

Total

General Fund (10)

2839 Other Staff Services

Elementary Secondary Federal Total

100	<u>Personnel Services – Salaries</u>			
	100 Personnel Services – Salaries			104,654.22
Total Personnel Services – Salaries				\$104,654.22
200	<u>Personnel Services – Employee Benefits</u>			
	210 Group Insurance – Contracted Provider			155.35
	220 Social Security Contributions			7,813.96
	230 PSERS Retirement Contributions			29,118.20
	250 Unemployment Compensation			38.01
	260 Workers' Compensation			1,063.73
	270 Group Insurance – Self-Insurance			13,401.29
	299 All Other Employee Benefits			431.55
Total Personnel Services – Employee Benefits				\$52,022.09
300	<u>Purchased Professional and Technical Services</u>			
	324 Professional Educational Services – Employee Training and Development Services			1,700.00
	329 Professional Educational Services – Other			73,279.32
	330 Other Professional Services			31,740.61
Total Purchased Professional and Technical Services				\$106,719.93
400	<u>Purchased Property Services</u>			
	430 Repairs and Maintenance Services			539.77
	440 Rentals			466.98
Total Purchased Property Services				\$1,006.75
500	<u>Other Purchased Services</u>			
	530 Communications			1,552.78
	549 Other Advertising/Public Relations			369.00
	580 Travel			3,135.03
Total Other Purchased Services				\$5,056.81
600	<u>Supplies</u>			
	610 General Supplies			9,329.22
	630 Food			748.50
Total Supplies				\$10,077.72
800	<u>Other Objects</u>			
	810 Dues and Fees			46,128.97
Total Other Objects				\$46,128.97
Total 2839 Other Staff Services				\$325,666.49

General Fund (10)

2840 Data Processing Services

	<u>Elementary</u>	<u>Secondary</u>	<u>Federal</u>	<u>Total</u>
100 Personnel Services – Salaries				
100 Personnel Services – Salaries				289,000.78
Total Personnel Services – Salaries				\$289,000.78
200 Personnel Services – Employee Benefits				
210 Group Insurance – Contracted Provider				1,108.93
220 Social Security Contributions				20,849.42
230 PSERS Retirement Contributions				85,722.11
250 Unemployment Compensation				106.41
260 Workers' Compensation				2,977.54
270 Group Insurance – Self-Insurance				68,030.71
299 All Other Employee Benefits				1,207.97
Total Personnel Services – Employee Benefits				\$180,003.09
300 Purchased Professional and Technical Services				
340 Technical Services				2,227.50
Total Purchased Professional and Technical Services				\$2,227.50
400 Purchased Property Services				
440 Rentals				2,616.39
Total Purchased Property Services				\$2,616.39
600 Supplies				
610 General Supplies				288.00
Total Supplies				\$288.00
Total 2840 Data Processing Services				\$474,135.76

General Fund (10)

2850 State and Federal Agency Liaison Services

Elementary

Secondary

Federal

Total

100 Personnel Services – Salaries

100 Personnel Services – Salaries

11,509.50

11,509.50

Total Personnel Services – Salaries

\$11,509.50

\$11,509.50

200 Personnel Services – Employee Benefits

210 Group Insurance – Contracted Provider

20.56

20.56

220 Social Security Contributions

749.48

749.48

230 PSERS Retirement Contributions

3,458.02

3,458.02

270 Group Insurance – Self-Insurance

538.83

538.83

Total Personnel Services – Employee Benefits

\$4,766.89

\$4,766.89

600 Supplies

630 Food

162.44

162.44

Total Supplies

\$162.44

\$162.44

Total 2850 State and Federal Agency Liaison Services

\$16,438.83

\$16,438.83

General Fund (10)

2900 Other Support Services

Elementary

Secondary

Federal

Total

500 Other Purchased Services

595 IU Payments By Withholding

128,218.87

Total Other Purchased Services

\$128,218.87

800 Other Objects

899 Pass-Through Funds

101,455.27

Total Other Objects

\$101,455.27

Total 2900 Other Support Services

\$229,674.14

General Fund (10)

2910 Support Services Not Listed Elsewhere In the 2000 Series

Elementary

Secondary

Federal

Total

500 Other Purchased Services

595 IU Payments By Withholding

128,218.87

Total Other Purchased Services

\$128,218.87

Total 2910 Support Services Not Listed Elsewhere In the 2000 Series

\$128,218.87

LEA : 124159002 West Chester Area SD

Printed 12/29/2017 2:20:11 PM

General Fund (10)

2990 Pass-Through Funds

Elementary

Secondary

Federal

Total

800 Other Objects

899 Pass-Through Funds

101,455.27

Total Other Objects

\$101,455.27

Total 2990 Pass-Through Funds

\$101,455.27

General Fund (10)

3000 Operation of Non-Instructional Services

Total

100 Personnel Services – Salaries

100 Personnel Services – Salaries 2,745,146.13

Total Personnel Services – Salaries \$2,745,146.13

200 Personnel Services – Employee Benefits

210 Group Insurance – Contracted Provider 5,758.62

220 Social Security Contributions 205,020.81

230 PSERS Retirement Contributions 637,666.44

250 Unemployment Compensation 244.59

260 Workers’ Compensation 6,844.19

270 Group Insurance – Self-Insurance 111,276.79

299 All Other Employee Benefits 2,776.65

Total Personnel Services – Employee Benefits \$969,588.09

300 Purchased Professional and Technical Services

324 Professional Educational Services – Employee Training and Development Services 175.00

329 Professional Educational Services – Other 3,443.75

330 Other Professional Services 60,393.00

350 Security / Safety Services 140,560.78

390 Other Purchased Professional and Technical Services 140,866.50

Total Purchased Professional and Technical Services \$345,439.03

400 Purchased Property Services

430 Repairs and Maintenance Services 29,616.14

440 Rentals 105,002.59

Total Purchased Property Services \$134,618.73

500 Other Purchased Services

510 Student Transportation Services 249,792.65

520 Insurance – General 38,325.00

530 Communications 2,520.89

550 Printing and Binding 2,288.05

580 Travel 55,738.45

Total Other Purchased Services \$348,665.04

600 Supplies

610 General Supplies 224,822.02

630 Food 507.40

640 Books and Periodicals 294.00

Total Supplies \$225,623.42

700 Property

762 Capitalized Equipment - Replacement 15,317.20

Total Property \$15,317.20

800 Other Objects

810 Dues and Fees 81,219.48

Total Other Objects \$81,219.48

Total 3000 Operation of Non-Instructional Services

\$4,865,617.12

General Fund (10)

3200 Student Activities

100 Personnel Services – Salaries

	<u>Elementary</u>	<u>Secondary</u>	<u>Federal</u>	<u>Total</u>
100 Personnel Services – Salaries				2,741,075.86

Total Personnel Services – Salaries				\$2,741,075.86
--	--	--	--	-----------------------

200 Personnel Services – Employee Benefits

210 Group Insurance – Contracted Provider				5,756.45
220 Social Security Contributions				204,719.16
230 PSERS Retirement Contributions				636,444.09
250 Unemployment Compensation				244.59
260 Workers' Compensation				6,844.19
270 Group Insurance – Self-Insurance				111,276.79
299 All Other Employee Benefits				2,776.65

Total Personnel Services – Employee Benefits				\$968,061.92
---	--	--	--	---------------------

300 Purchased Professional and Technical Services

324 Professional Educational Services – Employee Training and Development Services				175.00
329 Professional Educational Services – Other				2,825.97
330 Other Professional Services				60,393.00
350 Security / Safety Services				4,404.68
390 Other Purchased Professional and Technical Services				131,999.00

Total Purchased Professional and Technical Services				\$199,797.65
--	--	--	--	---------------------

400 Purchased Property Services

430 Repairs and Maintenance Services				29,616.14
440 Rentals				104,482.59

Total Purchased Property Services				\$134,098.73
--	--	--	--	---------------------

500 Other Purchased Services

510 Student Transportation Services				249,792.65
520 Insurance – General				38,325.00
530 Communications				2,519.88
550 Printing and Binding				2,288.05
580 Travel				48,281.08

Total Other Purchased Services				\$341,206.66
---------------------------------------	--	--	--	---------------------

600 Supplies

610 General Supplies				223,063.14
630 Food				193.40
640 Books and Periodicals				294.00

Total Supplies				\$223,550.54
-----------------------	--	--	--	---------------------

700 Property

762 Capitalized Equipment - Replacement				15,317.20
---	--	--	--	-----------

Total Property				\$15,317.20
-----------------------	--	--	--	--------------------

800 Other Objects

810 Dues and Fees				81,219.48
-------------------	--	--	--	-----------

Total Other Objects				\$81,219.48
----------------------------	--	--	--	--------------------

Total 3200 Student Activities				\$4,704,328.04
--------------------------------------	--	--	--	-----------------------

General Fund (10)

3300 Community Services

	<u>Elementary</u>	<u>Secondary</u>	<u>Federal</u>	<u>Total</u>
100 Personnel Services – Salaries				
100 Personnel Services – Salaries			2,300.27	4,070.27
Total Personnel Services – Salaries			\$2,300.27	\$4,070.27
200 Personnel Services – Employee Benefits				
210 Group Insurance – Contracted Provider			1.20	2.17
220 Social Security Contributions			170.07	301.65
230 PSERS Retirement Contributions			690.77	1,222.35
Total Personnel Services – Employee Benefits			\$862.04	\$1,526.17
300 Purchased Professional and Technical Services				
329 Professional Educational Services – Other			617.78	617.78
350 Security / Safety Services				136,156.10
390 Other Purchased Professional and Technical Services			8,867.50	8,867.50
Total Purchased Professional and Technical Services			\$9,485.28	\$145,641.38
400 Purchased Property Services				
440 Rentals			520.00	520.00
Total Purchased Property Services			\$520.00	\$520.00
500 Other Purchased Services				
530 Communications			1.01	1.01
580 Travel			7,457.37	7,457.37
Total Other Purchased Services			\$7,458.38	\$7,458.38
600 Supplies				
610 General Supplies			1,758.88	1,758.88
630 Food			314.00	314.00
Total Supplies			\$2,072.88	\$2,072.88
Total 3300 Community Services			\$22,698.85	\$161,289.08

General Fund (10)

5000 Other Expenditures and Financing Uses

Total

800 Other Objects

830 Interest 9,925,387.17

Total Other Objects \$9,925,387.17

900 Other Uses of Funds

910 Redemption of Principal 14,160,000.00

932 Capital Reserve Fund Transfers Applicable To Fund 32 6,193,328.34

Total Other Uses of Funds \$20,353,328.34

Total 5000 Other Expenditures and Financing Uses \$30,278,715.51

General Fund (10)

	<u>Elementary</u>	<u>Secondary</u>	<u>Federal</u>	<u>Total</u>
5100 Debt Service / Other Expenditures and Financing Uses				
800 Other Objects				
830 Interest				9,925,387.17
Total Other Objects				\$9,925,387.17
900 Other Uses of Funds				
910 Redemption of Principal				14,160,000.00
Total Other Uses of Funds				\$14,160,000.00
Total 5100 Debt Service / Other Expenditures and Financing Uses				\$24,085,387.17

General Fund (10)

	<u>Elementary</u>	<u>Secondary</u>	<u>Federal</u>	<u>Total</u>
5110 Debt Service				
800 Other Objects				
830 Interest				9,925,387.17
Total Other Objects				\$9,925,387.17
900 Other Uses of Funds				
910 Redemption of Principal				14,160,000.00
Total Other Uses of Funds				\$14,160,000.00
Total 5110 Debt Service				\$24,085,387.17

General Fund (10)

5200 Interfund Transfers – Out

Elementary

Secondary

Federal

Total

900 Other Uses of Funds

932 Capital Reserve Fund Transfers Applicable To Fund 32

6,193,328.34

Total Other Uses of Funds

\$6,193,328.34

Total 5200 Interfund Transfers – Out

\$6,193,328.34

LEA : 124159002 West Chester Area SD

Printed 12/29/2017 2:20:19 PM

General Fund (10)

5230 Capital Projects Fund Transfers

Elementary

Secondary

Federal

Total

900 Other Uses of Funds

932 Capital Reserve Fund Transfers Applicable To Fund 32

6,193,328.34

Total Other Uses of Funds

\$6,193,328.34

Total 5230 Capital Projects Fund Transfers

\$6,193,328.34

Capital Reserve Fund - § 1431 (32)

2000 Support Services

Total

300 Purchased Professional and Technical Services

330 Other Professional Services 16,098.73

Total Purchased Professional and Technical Services \$16,098.73

500 Other Purchased Services

520 Insurance – General (6,729.21)

Total Other Purchased Services (\$6,729.21)

600 Supplies

610 General Supplies 44,780.33

650 Supplies & Fees – Technology Related 1,940,447.49

Total Supplies \$1,985,227.82

700 Property

758 Capitalized Technology Software - Original 26,460.00

768 Capitalized Technology Software - Replacement 713,989.66

Total Property \$740,449.66

800 Other Objects

810 Dues and Fees 4,696.07

Total Other Objects \$4,696.07

Total 2000 Support Services \$2,739,743.07

LEA : 124159002 West Chester Area SD

Printed 12/29/2017 2:20:14 PM

Capital Reserve Fund - § 1431 (32)

2200 Support Services – Instructional Staff

	<u>Elementary</u>	<u>Secondary</u>	<u>Federal</u>	<u>Total</u>
600 Supplies				
650 Supplies & Fees – Technology Related	402,342.36	747,895.02		1,150,237.38
Total Supplies	\$402,342.36	\$747,895.02		\$1,150,237.38
700 Property				
768 Capitalized Technology Software - Replacement	53,721.26	660,268.40		713,989.66
Total Property	\$53,721.26	\$660,268.40		\$713,989.66
Total 2200 Support Services – Instructional Staff	\$456,063.62	\$1,408,163.42		\$1,864,227.04

LEA : 124159002 West Chester Area SD

Printed 12/29/2017 2:20:14 PM

Capital Reserve Fund - § 1431 (32)

2210 Supervision of Educational Media Services

	<u>Elementary</u>	<u>Secondary</u>	<u>Federal</u>	<u>Total</u>
600 <u>Supplies</u>				
650 Supplies & Fees – Technology Related	1,245.56	1,192.88		2,438.44
Total Supplies	\$1,245.56	\$1,192.88		\$2,438.44
Total 2210 Supervision of Educational Media Services	\$1,245.56	\$1,192.88		\$2,438.44

Capital Reserve Fund - § 1431 (32)

2219 Supervision of Educational Media Services – All Other Supervision

600 Supplies

650 Supplies & Fees – Technology Related

Total Supplies

Total 2219 Supervision of Educational Media Services – All Other Supervision

	<u>Elementary</u>	<u>Secondary</u>	<u>Federal</u>	<u>Total</u>
650 Supplies & Fees – Technology Related	1,245.56	1,192.88		2,438.44
Total Supplies	\$1,245.56	\$1,192.88		\$2,438.44
Total 2219 Supervision of Educational Media Services – All Other Supervision	\$1,245.56	\$1,192.88		\$2,438.44

LEA : 124159002 West Chester Area SD

Printed 12/29/2017 2:20:14 PM

Capital Reserve Fund - § 1431 (32)

2220 Technology Support Services

	<u>Elementary</u>	<u>Secondary</u>	<u>Federal</u>	<u>Total</u>
600 Supplies				
650 Supplies & Fees – Technology Related	400,637.54	746,262.30		1,146,899.84
Total Supplies	\$400,637.54	\$746,262.30		\$1,146,899.84
700 Property				
768 Capitalized Technology Software - Replacement	53,721.26	660,268.40		713,989.66
Total Property	\$53,721.26	\$660,268.40		\$713,989.66
Total 2220 Technology Support Services	\$454,358.80	\$1,406,530.70		\$1,860,889.50

LEA : 124159002 West Chester Area SD

Printed 12/29/2017 2:20:14 PM

Capital Reserve Fund - § 1431 (32)

2270 Instructional Staff Professional Development Services

	<u>Elementary</u>	<u>Secondary</u>	<u>Federal</u>	<u>Total</u>
600 <u>Supplies</u>				
650 Supplies & Fees – Technology Related	459.26	439.84		899.10
Total Supplies	\$459.26	\$439.84		\$899.10
Total 2270 Instructional Staff Professional Development Services	\$459.26	\$439.84		\$899.10

Capital Reserve Fund - § 1431 (32)

2300 Support Services – Administration

Elementary

Secondary

Federal

Total

300 Purchased Professional and Technical Services

330 Other Professional Services

16,098.73

Total Purchased Professional and Technical Services

\$16,098.73

600 Supplies

650 Supplies & Fees – Technology Related

83,403.97

Total Supplies

\$83,403.97

700 Property

758 Capitalized Technology Software - Original

26,460.00

Total Property

\$26,460.00

Total 2300 Support Services – Administration

\$125,962.70

LEA : 124159002 West Chester Area SD

Printed 12/29/2017 2:20:14 PM

Capital Reserve Fund - § 1431 (32)

2350 Legal and Accounting Services

Elementary

Secondary

Federal

Total

300 Purchased Professional and Technical Services

330 Other Professional Services

16,098.73

Total Purchased Professional and Technical Services

\$16,098.73

Total 2350 Legal and Accounting Services

\$16,098.73

LEA : 124159002 West Chester Area SD

Printed 12/29/2017 2:20:14 PM

Capital Reserve Fund - § 1431 (32)

2390 Other Administration Services

Elementary

Secondary

Federal

Total

600 Supplies

650 Supplies & Fees – Technology Related

83,403.97

Total Supplies

\$83,403.97

700 Property

758 Capitalized Technology Software - Original

26,460.00

Total Property

\$26,460.00

Total 2390 Other Administration Services

\$109,863.97

LEA : 124159002 West Chester Area SD

Printed 12/29/2017 2:20:14 PM

Capital Reserve Fund - § 1431 (32)

2500 Support Services – Business

Elementary

Secondary

Federal

Total

600 Supplies

610 General Supplies

44,780.33

Total Supplies

\$44,780.33

Total 2500 Support Services – Business

\$44,780.33

LEA : 124159002 West Chester Area SD

Printed 12/29/2017 2:20:14 PM

Capital Reserve Fund - § 1431 (32)

2590 Other Support Services – Business

Elementary

Secondary

Federal

Total

600 Supplies

610 General Supplies

44,780.33

Total Supplies

\$44,780.33

Total 2590 Other Support Services – Business

\$44,780.33

LEA : 124159002 West Chester Area SD

Printed 12/29/2017 2:20:14 PM

Capital Reserve Fund - § 1431 (32)

2800 Support Services – Central

Elementary

Secondary

Federal

Total

500 Other Purchased Services

520 Insurance – General

(6,729.21)

Total Other Purchased Services

(\$6,729.21)

600 Supplies

650 Supplies & Fees – Technology Related

706,806.14

Total Supplies

\$706,806.14

800 Other Objects

810 Dues and Fees

4,696.07

Total Other Objects

\$4,696.07

Total 2800 Support Services – Central

\$704,773.00

LEA : 124159002 West Chester Area SD

Printed 12/29/2017 2:20:14 PM

Capital Reserve Fund - § 1431 (32)

	<u>Elementary</u>	<u>Secondary</u>	<u>Federal</u>	<u>Total</u>
2820 Information Services				
500 Other Purchased Services				
520 Insurance – General				(6,729.21)
Total Other Purchased Services				(\$6,729.21)
600 Supplies				
650 Supplies & Fees – Technology Related				706,806.14
Total Supplies				\$706,806.14
800 Other Objects				
810 Dues and Fees				4,696.07
Total Other Objects				\$4,696.07
Total 2820 Information Services				\$704,773.00

LEA : 124159002 West Chester Area SD

Printed 12/29/2017 2:20:14 PM

Capital Reserve Fund - § 1431 (32)

	<u>Elementary</u>	<u>Secondary</u>	<u>Federal</u>	<u>Total</u>
2829 Other Information Services				
500 Other Purchased Services				
520 Insurance – General				(6,729.21)
Total Other Purchased Services				(\$6,729.21)
600 Supplies				
650 Supplies & Fees – Technology Related				706,806.14
Total Supplies				\$706,806.14
800 Other Objects				
810 Dues and Fees				4,696.07
Total Other Objects				\$4,696.07
Total 2829 Other Information Services				\$704,773.00

Capital Reserve Fund - § 1431 (32)

4000 Facilities Acquisition, Construction and Improvement Services

Total

100 Personnel Services – Salaries

100 Personnel Services – Salaries 116,969.13

Total Personnel Services – Salaries \$116,969.13

200 Personnel Services – Employee Benefits

210 Group Insurance – Contracted Provider 212.14

220 Social Security Contributions 8,333.47

230 PSERS Retirement Contributions 34,481.07

270 Group Insurance – Self-Insurance 22,100.00

Total Personnel Services – Employee Benefits \$65,126.68

300 Purchased Professional and Technical Services

330 Other Professional Services 1,892,175.25

390 Other Purchased Professional and Technical Services 2,674,775.65

Total Purchased Professional and Technical Services \$4,566,950.90

600 Supplies

610 General Supplies 162,756.68

Total Supplies \$162,756.68

700 Property

720 Buildings 3,552,891.05

752 Capital Equipment – Original and Additional 86,230.07

758 Capitalized Technology Software - Original 66,398.00

Total Property \$3,705,519.12

Total 4000 Facilities Acquisition, Construction and Improvement Services \$8,617,322.51

Capital Reserve Fund - § 1431 (32)

4500 Building Acquisition and Construction Services – Original and Additional

Elementary

Secondary

Federal

Total

300 Purchased Professional and Technical Services

330 Other Professional Services

1,884,731.25

390 Other Purchased Professional and Technical Services

92,543.85

Total Purchased Professional and Technical Services

\$1,977,275.10

700 Property

720 Buildings

3,552,891.05

758 Capitalized Technology Software - Original

66,398.00

Total Property

\$3,619,289.05

Total 4500 Building Acquisition and Construction Services – Original and Additional

\$5,596,564.15

Capital Reserve Fund - § 1431 (32)

4600 Existing Building Improvement Services

Elementary

Secondary

Federal

Total

100 Personnel Services – Salaries

100 Personnel Services – Salaries

116,969.13

Total Personnel Services – Salaries

\$116,969.13

200 Personnel Services – Employee Benefits

210 Group Insurance – Contracted Provider

212.14

220 Social Security Contributions

8,333.47

230 PSERS Retirement Contributions

34,481.07

270 Group Insurance – Self-Insurance

22,100.00

Total Personnel Services – Employee Benefits

\$65,126.68

300 Purchased Professional and Technical Services

330 Other Professional Services

7,444.00

390 Other Purchased Professional and Technical Services

2,582,231.80

Total Purchased Professional and Technical Services

\$2,589,675.80

600 Supplies

610 General Supplies

162,756.68

Total Supplies

\$162,756.68

700 Property

752 Capital Equipment – Original and Additional

86,230.07

Total Property

\$86,230.07

Total 4600 Existing Building Improvement Services

\$3,020,758.36

Other Capital Projects Fund (39)

2000 Support Services

800 Other Objects

810 Dues and Fees

186,433.75

Total Other Objects

\$186,433.75

Total 2000 Support Services

\$186,433.75

LEA : 124159002 West Chester Area SD

Printed 12/29/2017 2:20:14 PM

Other Capital Projects Fund (39)

2300 Support Services – Administration

Elementary

Secondary

Federal

Total

800 Other Objects

810 Dues and Fees

186,433.75

Total Other Objects

\$186,433.75

Total 2300 Support Services – Administration

\$186,433.75

LEA : 124159002 West Chester Area SD

Printed 12/29/2017 2:20:14 PM

Other Capital Projects Fund (39)

2390 Other Administration Services

Elementary

Secondary

Federal

Total

800 Other Objects

810 Dues and Fees

186,433.75

Total Other Objects

\$186,433.75

Total 2390 Other Administration Services

\$186,433.75

Other Capital Projects Fund (39)

4000 Facilities Acquisition, Construction and Improvement Services

Total

100 Personnel Services – Salaries

100 Personnel Services – Salaries 246,923.19

Total Personnel Services – Salaries \$246,923.19

200 Personnel Services – Employee Benefits

210 Group Insurance – Contracted Provider 1,660.33

220 Social Security Contributions 18,315.27

230 PSERS Retirement Contributions 70,859.49

270 Group Insurance – Self-Insurance 42,258.99

Total Personnel Services – Employee Benefits \$133,094.08

300 Purchased Professional and Technical Services

310 Official / Administrative Services 131.44

330 Other Professional Services 481,793.41

390 Other Purchased Professional and Technical Services 7,351,797.25

Total Purchased Professional and Technical Services \$7,833,722.10

600 Supplies

610 General Supplies (269,246.06)

Total Supplies (\$269,246.06)

700 Property

758 Capitalized Technology Software - Original 65,420.91

Total Property \$65,420.91

Total 4000 Facilities Acquisition, Construction and Improvement Services \$8,009,914.22

Other Capital Projects Fund (39)

4600 Existing Building Improvement Services

Elementary

Secondary

Federal

Total

100 Personnel Services – Salaries

100 Personnel Services – Salaries

246,923.19

Total Personnel Services – Salaries

\$246,923.19

200 Personnel Services – Employee Benefits

210 Group Insurance – Contracted Provider

1,660.33

220 Social Security Contributions

18,315.27

230 PSERS Retirement Contributions

70,859.49

270 Group Insurance – Self-Insurance

42,258.99

Total Personnel Services – Employee Benefits

\$133,094.08

300 Purchased Professional and Technical Services

310 Official / Administrative Services

131.44

330 Other Professional Services

481,793.41

390 Other Purchased Professional and Technical Services

7,351,797.25

Total Purchased Professional and Technical Services

\$7,833,722.10

600 Supplies

610 General Supplies

(269,246.06)

Total Supplies

(\$269,246.06)

700 Property

758 Capitalized Technology Software - Original

65,420.91

Total Property

\$65,420.91

Total 4600 Existing Building Improvement Services

\$8,009,914.22

LEA : 124159002 West Chester Area SD

Printed 12/29/2017 2:20:15 PM

Debt Service Fund (40)

2000 Support Services

800 Other Objects

810 Dues and Fees

141,354.00

Total Other Objects

\$141,354.00

Total 2000 Support Services

\$141,354.00

LEA : 124159002 West Chester Area SD

Printed 12/29/2017 2:20:15 PM

Debt Service Fund (40)

2300 Support Services – Administration

Elementary

Secondary

Federal

Total

800 Other Objects

810 Dues and Fees

141,354.00

Total Other Objects

\$141,354.00

Total 2300 Support Services – Administration

\$141,354.00

LEA : 124159002 West Chester Area SD

Printed 12/29/2017 2:20:15 PM

Debt Service Fund (40)

2390 Other Administration Services

Elementary

Secondary

Federal

Total

800 Other Objects

810 Dues and Fees

141,354.00

Total Other Objects

\$141,354.00

Total 2390 Other Administration Services

\$141,354.00

LEA : 124159002 West Chester Area SD

Printed 12/29/2017 2:20:20 PM

Debt Service Fund (40)

5000 Other Expenditures and Financing Uses

Total

900 Other Uses of Funds

910 Redemption of Principal

7,438,378.00

939 Other Fund Transfers

12,351.00

Total Other Uses of Funds

\$7,450,729.00

Total 5000 Other Expenditures and Financing Uses

\$7,450,729.00

LEA : 124159002 West Chester Area SD

Printed 12/29/2017 2:20:20 PM

Debt Service Fund (40)

5100 Debt Service / Other Expenditures and Financing Uses

Elementary

Secondary

Federal

Total

900 Other Uses of Funds

910 Redemption of Principal

7,438,378.00

Total Other Uses of Funds

\$7,438,378.00

Total 5100 Debt Service / Other Expenditures and Financing Uses

\$7,438,378.00

LEA : 124159002 West Chester Area SD

Printed 12/29/2017 2:20:20 PM

Debt Service Fund (40)

5120 Debt Service – Refunded Bonds

Elementary

Secondary

Federal

Total

900 Other Uses of Funds

910 Redemption of Principal

7,438,378.00

Total Other Uses of Funds

\$7,438,378.00

Total 5120 Debt Service – Refunded Bonds

\$7,438,378.00

LEA : 124159002 West Chester Area SD

Printed 12/29/2017 2:20:20 PM

Debt Service Fund (40)

5200 Interfund Transfers – Out

Elementary

Secondary

Federal

Total

900 Other Uses of Funds

939 Other Fund Transfers

12,351.00

Total Other Uses of Funds

\$12,351.00

Total 5200 Interfund Transfers – Out

\$12,351.00

LEA : 124159002 West Chester Area SD

Printed 12/29/2017 2:20:20 PM

Debt Service Fund (40)

5230 Capital Projects Fund Transfers

Elementary

Secondary

Federal

Total

900 Other Uses of Funds

939 Other Fund Transfers

12,351.00

Total Other Uses of Funds

\$12,351.00

Total 5230 Capital Projects Fund Transfers

\$12,351.00

	<u>General Fund(10)</u>	<u>Public Purpose Trust(27)</u>	<u>Other Compt Approved (28)</u>	<u>Athletic / Activity(29)</u>	<u>Capital Reserve (690, 1850)(31)</u>
1000 Instruction					
1100 Regular Programs - Elementary / Secondary	89,969,744.62				
1200 Special Programs - Elementary / Secondary	40,928,043.62				
1300 Vocational Education	6,155,173.89				
1400 Other Instructional Programs - Elementary / Secondary	689,101.49				
1500 Nonpublic School Programs	52,225.09				
Total Instruction	\$137,794,288.71				
2000 Support Services					
2100 Support Services - Students	8,686,872.74				
2200 Support Services - Instructional Staff	5,481,669.85				
2300 Support Services - Administration	11,040,270.47				
2400 Support Services - Pupil Health	2,256,872.37				
2500 Support Services - Business	1,790,607.49				
2600 Operation and Maintenance of Plant Services	15,996,617.72				
2700 Student Transportation Services	13,606,726.80				
2800 Support Services - Central	3,354,190.67				
2900 Other Support Services	229,674.14				
Total Support Services	\$62,443,502.25				
3000 Operation of Non-Instructional Services					
3200 Student Activities	4,704,328.04				
3300 Community Services	161,289.08				
Total Operation of Non-Instructional Services	\$4,865,617.12				
4000 Facilities Acquisition, Construction and Improvement Services					
4500 Building Acquisition and Construction Services - Original and Additional					
4600 Existing Building Improvement Services					
Total Facilities Acquisition, Construction and Improvement Services					
5000 Other Expenditures and Financing Uses					
5100 Debt Service / Other Expenditures and Financing Uses	24,085,387.17				
5200 Interfund Transfers - Out	6,193,328.34				
Total Other Expenditures and Financing Uses	\$30,278,715.51				
TOTAL ACTUAL EXPENDITURES & OTHER FINANCING USES	\$235,382,123.59				

	<u>Capital Reserve (1431)(32)</u>	<u>Other Capital Projects Fund(39)</u>	<u>Debt Service(40)</u>	<u>Permanent(90)</u>	<u>Total</u>
1000 Instruction					
1100 Regular Programs - Elementary / Secondary					89,969,744.62
1200 Special Programs - Elementary / Secondary					40,928,043.62
1300 Vocational Education					6,155,173.89
1400 Other Instructional Programs - Elementary / Secondary					689,101.49
1500 Nonpublic School Programs					52,225.09
Total Instruction					\$137,794,288.71
2000 Support Services					
2100 Support Services - Students					8,686,872.74
2200 Support Services - Instructional Staff	1,864,227.04				7,345,896.89
2300 Support Services - Administration	125,962.70	186,433.75	141,354.00		11,494,020.92
2400 Support Services - Pupil Health					2,256,872.37
2500 Support Services - Business	44,780.33				1,835,387.82
2600 Operation and Maintenance of Plant Services					15,996,617.72
2700 Student Transportation Services					13,606,726.80
2800 Support Services - Central	704,773.00				4,058,963.67
2900 Other Support Services					229,674.14
Total Support Services	\$2,739,743.07	\$186,433.75	\$141,354.00		\$65,511,033.07
3000 Operation of Non-Instructional Services					
3200 Student Activities					4,704,328.04
3300 Community Services					161,289.08
Total Operation of Non-Instructional Services					\$4,865,617.12
4000 Facilities Acquisition, Construction and Improvement Services					
4500 Building Acquisition and Construction Services - Original and Additional	5,596,564.15				5,596,564.15
4600 Existing Building Improvement Services	3,020,758.36	8,009,914.22			11,030,672.58
Total Facilities Acquisition, Construction and Improvement Services	\$8,617,322.51	\$8,009,914.22			\$16,627,236.73
5000 Other Expenditures and Financing Uses					
5100 Debt Service / Other Expenditures and Financing Uses			7,438,378.00		31,523,765.17
5200 Interfund Transfers - Out			12,351.00		6,205,679.34
Total Other Expenditures and Financing Uses			\$7,450,729.00		\$37,729,444.51
TOTAL ACTUAL EXPENDITURES & OTHER FINANCING USES	\$11,357,065.58	\$8,196,347.97	\$7,592,083.00		\$262,527,620.14

LEA : 124159002 West Chester Area SD

Printed 12/29/2017 2:20:25 PM

PSERS Salary Data (Salary Data should relate to the General Fund only)

Amount Description	Amount
Total Salary Base for salaries subject to PSERS withholding	90,568,276.21
Total Federally Funded salaries subject to PSERS withholding	687,269.27
	<hr/>

Title I Expenditure Data

Amount Description	Amount
Expenditures Funded with Current Title I Funds	964,538.10
Expenditures Funded with Carry over Title I Funds	
Total Title I Expenditure Data	<hr/> \$964,538.10 <hr/>

Title I ARRA Amount

Amount Description	Amount
Portion of Total Title I Expenditures funded with ARRA Title I	<hr/>

Benefits for Staff Relative to Collective Bargaining Agreements

	OBJECT	COVERED	NOT COVERED	TOTAL
10 General Fund				
	211 Medical Insurance			
	212 Dental Insurance			
	215 Eye Care Insurance			
	216 Prescription Insurance			
	271 Self-Insurance Medical Benefits	11,553,967.22	1,188,955.96	12,742,923.18
	272 Self-Insurance Dental Benefits	922,943.46	96,796.51	1,019,739.97
	275 Self-Insurance Eye Care Benefits	152,822.26	16,231.12	169,053.38
	276 Self-Insurance Prescription Benefits	3,987,289.27	412,933.85	4,400,223.12
	FUND TOTAL	\$16,617,022.21	\$1,714,917.44	\$18,331,939.65
50 Enterprise Fund	No Self Insurance data to report			
	211 Medical Insurance			
	212 Dental Insurance			
	215 Eye Care Insurance			
	216 Prescription Insurance			
	271 Self-Insurance Medical Benefits			
	272 Self-Insurance Dental Benefits			
	275 Self-Insurance Eye Care Benefits			
	276 Self-Insurance Prescription Benefits			
	FUND TOTAL			
60 Internal Service Fund	No Self Insurance data to report			
	211 Medical Insurance			
	212 Dental Insurance			
	215 Eye Care Insurance			
	216 Prescription Insurance			
	271 Self-Insurance Medical Benefits			
	272 Self-Insurance Dental Benefits			
	275 Self-Insurance Eye Care Benefits			
	276 Self-Insurance Prescription Benefits			
	FUND TOTAL			
Total of All Funds		\$16,617,022.21	\$1,714,917.44	\$18,331,939.65

LEA : 124159002 West Chester Area SD

Printed 12/29/2017 2:20:26 PM

Function	Special Education (Prior Year)	Nonspecial Education (Prior Year)	Total (Prior Year)	Special Education (Current Year)	Nonspecial Education (Current Year)	Total (Current Year)
2120 Guidance Services	1,976,674.87	2,965,012.30	4,941,687.17	1,925,641.36	2,888,462.03	4,814,103.39
2140 Psychological Services	1,758,822.29	195,424.70	1,954,246.99	1,826,523.31	202,947.03	2,029,470.34
2150 Speech Pathology and Audiology Services						
2160 Social Work Services	175,341.53	526,024.60	701,366.13	191,295.94	573,887.80	765,183.74
2260 Instruction and Curriculum Development Services	219,201.73	1,607,479.39	1,826,681.12	217,770.60	1,596,984.38	1,814,754.98
2350 Legal and Accounting Services	22,845.12	167,530.88	190,376.00	19,515.64	367,727.44	387,243.08
2420 Medical Services	189.00	1,386.00	1,575.00	347.40	2,547.60	2,895.00
2440 Nursing Services	226,319.73	1,659,678.05	1,885,997.78	234,079.95	1,716,586.28	1,950,666.23
2700 Student Transportation Services	3,495,536.26	9,688,115.77	13,183,652.03	3,848,073.15	9,758,653.65	13,606,726.80
Total	\$7,874,930.53	\$16,810,651.69	\$24,685,582.22	\$8,263,247.35	\$17,107,796.21	\$25,371,043.56

(PRINCIPAL AMOUNTS ONLY)

GOVERNMENTAL FUNDS/ ACTIVITIES

	Short-Term Borrowing	General Obligation Bonds/Notes	Authority Building Obligations	Other Long-Term Debt	Other Post-Employment Benefits (OPEB)	Compensated Absences	Net Pension Liability	Total
1. Debt at Beginning of Fiscal Year		266,615,000.00			406,171.00	4,626,439.00	293,071,000.00	564,718,610.00
2. Additional Debt Incurred During Year		15,995,000.00			1,972,926.00	977,976.00	66,236,000.00	85,181,902.00
3. Retirements and Repayments		21,540,000.00			1,709,841.00	852,392.00	21,726,000.00	45,828,233.00
4. Debt at End of Fiscal Year		261,070,000.00			669,256.00	4,752,023.00	337,581,000.00	604,072,279.00
5. Accreted Interest at End Of Fiscal Year								
6. Total Debt and Accreted Interest		261,070,000.00			669,256.00	4,752,023.00	337,581,000.00	604,072,279.00
7. Current Portion P&I - Due within 1 year		24,953,715.00						24,953,715.00
8. Interest Paid during current fiscal year		9,930,197.00						9,930,197.00

(PRINCIPAL AMOUNTS ONLY)

PROPRIETARY FUNDS

- 1. Debt at Beginning of Fiscal Year
- 2. Additional Debt Incurred During Year
- 3. Retirements and Repayments
- 4. Debt at End of Fiscal Year
- 5. Accreted Interest at End Of Fiscal Year
- 6. Total Debt and Accreted Interest
- 7. Current Portion P&I - Due within 1 year
- 8. Interest Paid during current fiscal year

Total Principal and Interest Payments Made by Your School - All Funds

Function	Fund		Principal (910)	Principal (920)	Interest (830)	Total (Principal +Interest)	Misc Other Uses (990)
5110	10	General Fund	14,160,000.00		9,925,387.17	24,085,387.17	
5110	20	Special Revenue Funds					
5110	30	Capital Projects Funds					
5110	40	Debt Service Fund					
5110	90	Permanent Fund					
5120	10	General Fund					
5120	20	Special Revenue Funds					
5120	30	Capital Projects Funds					
5120	40	Debt Service Fund	7,438,378.00			7,438,378.00	
Total Debt Payments - Governmental Funds			\$21,598,378.00		\$9,925,387.17	\$31,523,765.17	

Function	Fund		Principal (910)	Principal (920)	Interest (830)	Total (Principal +Interest)
5110	50	Enterprise Fund				
5110	60	Internal Service Fund				
5120	50	Enterprise Fund				
5120	60	Internal Service Fund				
Total Debt Payments - Proprietary Funds						

Debt Details
Governmental Funds/ Activities

Debt Category	Debt Issue Date (MM/YYYY)	Principal Amounts Only			Debt at End of Fiscal Year	Current Portion Due Within One Year (Principal and Interest)	Interest Paid During Fiscal Year
		Debt at Beginning of Fiscal Year	Additions	Reductions / Repayments			
General Obligation Bonds/Notes – CIB	05/2017		7,495,000.00		7,495,000.00	436,330.00	
General Obligation Bonds/Notes – CIB	12/2016		8,500,000.00		8,500,000.00	259,712.00	95,517.00
General Obligation Bonds/Notes – CIB	01/2016	15,200,000.00		1,490,000.00	13,710,000.00	2,347,150.00	696,650.00
General Obligation Bonds/Notes – CIB	04/2016	32,030,000.00		5,000.00	32,025,000.00	1,253,905.00	926,321.00
General Obligation Bonds/Notes – CIB	04/2015	4,610,000.00		3,320,000.00	1,290,000.00	1,315,800.00	101,400.00
General Obligation Bonds/Notes – CIB	08/2015	9,690,000.00		5,000.00	9,685,000.00	262,738.00	257,803.00
General Obligation Bonds/Notes – CIB	09/2015	4,315,000.00		665,000.00	3,650,000.00	781,900.00	116,664.00
General Obligation Bonds/Notes – CIB	01/2014	12,000,000.00			12,000,000.00	489,763.00	489,763.00
General Obligation Bonds/Notes – CIB	01/2014	30,880,000.00		4,485,000.00	26,395,000.00	1,304,450.00	1,366,725.00
General Obligation Bonds/Notes – CIB	09/2014	57,280,000.00		270,000.00	57,010,000.00	2,475,000.00	2,213,100.00
General Obligation Bonds/Notes – CIB	01/2013	4,050,000.00		765,000.00	3,285,000.00	860,700.00	93,075.00
General Obligation Bonds/Notes – CIB	08/2012	21,000,000.00			21,000,000.00	630,000.00	630,000.00
General Obligation Bonds/Notes – CIB	08/2012	39,100,000.00		115,000.00	38,985,000.00	9,634,450.00	1,801,750.00
General Obligation Bonds/Notes – CIB	10/2011	7,905,000.00		7,905,000.00			208,764.00
General Obligation Bonds/Notes – CIB	12/2010	18,585,000.00		2,510,000.00	16,075,000.00	2,498,350.00	778,650.00
General Obligation Bonds/Notes – CIB	10/2009	9,970,000.00		5,000.00	9,965,000.00	403,467.00	154,015.00
Compensated Absences		4,626,439.00	977,976.00	852,392.00	4,752,023.00		
Other Post-Employment Benefits (OPEB)		406,171.00	1,972,926.00	1,709,841.00	669,256.00		
Net Pension Liability		293,071,000.00	66,236,000.00	21,726,000.00	337,581,000.00		
Totals for Debt Entered:		\$564,718,610.00	\$85,181,902.00	\$45,828,233.00	\$604,072,279.00	\$24,953,715.00	\$9,930,197.00

General Fund (10)

Section 1: Tuition/Purchased Services as Reported within Expenditure Detail

	Amount
Tuition Reported in General Fund Expenditures 1000-560	16,044,682.25
Purchased Services in General Fund Expenditures 1000-594 and 1000-597	

Section 1 Total	\$16,044,682.25
------------------------	------------------------

Section 2: Tuition Paid to Institution Types During Fiscal Year

	Tuition Paid For Nonspecial Education	Tuition Paid For Special Education	Total
1 1306 Institutions		1,259,429.21	1,259,429.21
2 Institutionalized Children's Programs			
3 Juveniles Incarcerated in Adult Facilities			
4 Residential Treatment Facilities			
5 Other Local Education Agencies	16,136.62	54,348.35	70,484.97
6 Brick and Mortar Charter Schools	5,398,603.27	2,529,146.25	7,927,749.52
7 Cyber Charter Schools	1,295,533.06	595,560.43	1,891,093.49
8 Career and Technology Centers		2,722,372.00	2,722,372.00
9 Approved Private Schools		1,431,098.25	1,431,098.25
10 PA Chartered Schools for the Deaf and Blind			
11 Private Residential Rehabilitative Institutions		21,820.24	21,820.24
12 Juvenile Detention Centers			
13 Special Program Jointures			
14 Other Tuition Not Included Elsewhere In This Section	18,661.75	701,972.82	720,634.57

Section 2 Total	\$6,728,934.70	\$9,315,747.55	\$16,044,682.25
------------------------	-----------------------	-----------------------	------------------------

LEA : 124159002 West Chester Area SD

Printed 12/29/2017 2:20:29 PM

Food Service / Cafeteria Operations Fund (51)

3000 Operation of Non-Instructional Services

Total

500 Other Purchased Services

570 Food Service Management 3,211,903.00

Total Other Purchased Services \$3,211,903.00

600 Supplies

610 General Supplies 3,610.00

Total Supplies \$3,610.00

700 Property

740 Depreciation 78,862.00

Total Property \$78,862.00

Total 3000 Operation of Non-Instructional Services \$3,294,375.00

Food Service / Cafeteria Operations Fund (51)

	<u>Elementary</u>	<u>Secondary</u>	<u>Federal</u>	<u>Total</u>
3100 Food Services				
500 <u>Other Purchased Services</u>				
570 Food Service Management				3,211,903.00
Total Other Purchased Services				\$3,211,903.00
600 <u>Supplies</u>				
610 General Supplies				3,610.00
Total Supplies				\$3,610.00
700 <u>Property</u>				
740 Depreciation				78,862.00
Total Property				\$78,862.00
Total 3100 Food Services				\$3,294,375.00

	<u>Food Service(51)</u>	<u>Child Care Operations(52)</u>	<u>Other Enterprise(58)</u>	<u>Internal Service(60)</u>	<u>Total</u>
3000 <u>Operation of Non-Instructional Services</u>					
3100 Food Services	3,294,375.00				3,294,375.00
Total Operation of Non-Instructional Services	\$3,294,375.00				\$3,294,375.00
TOTAL ACTUAL EXPENDITURES & OTHER FINANCING USES	\$3,294,375.00				\$3,294,375.00